

File No. 41  
 Schleicher County  
 Sketch File  
 Filed 4/3 1963  
 By Jerry Sadler, County Clerk

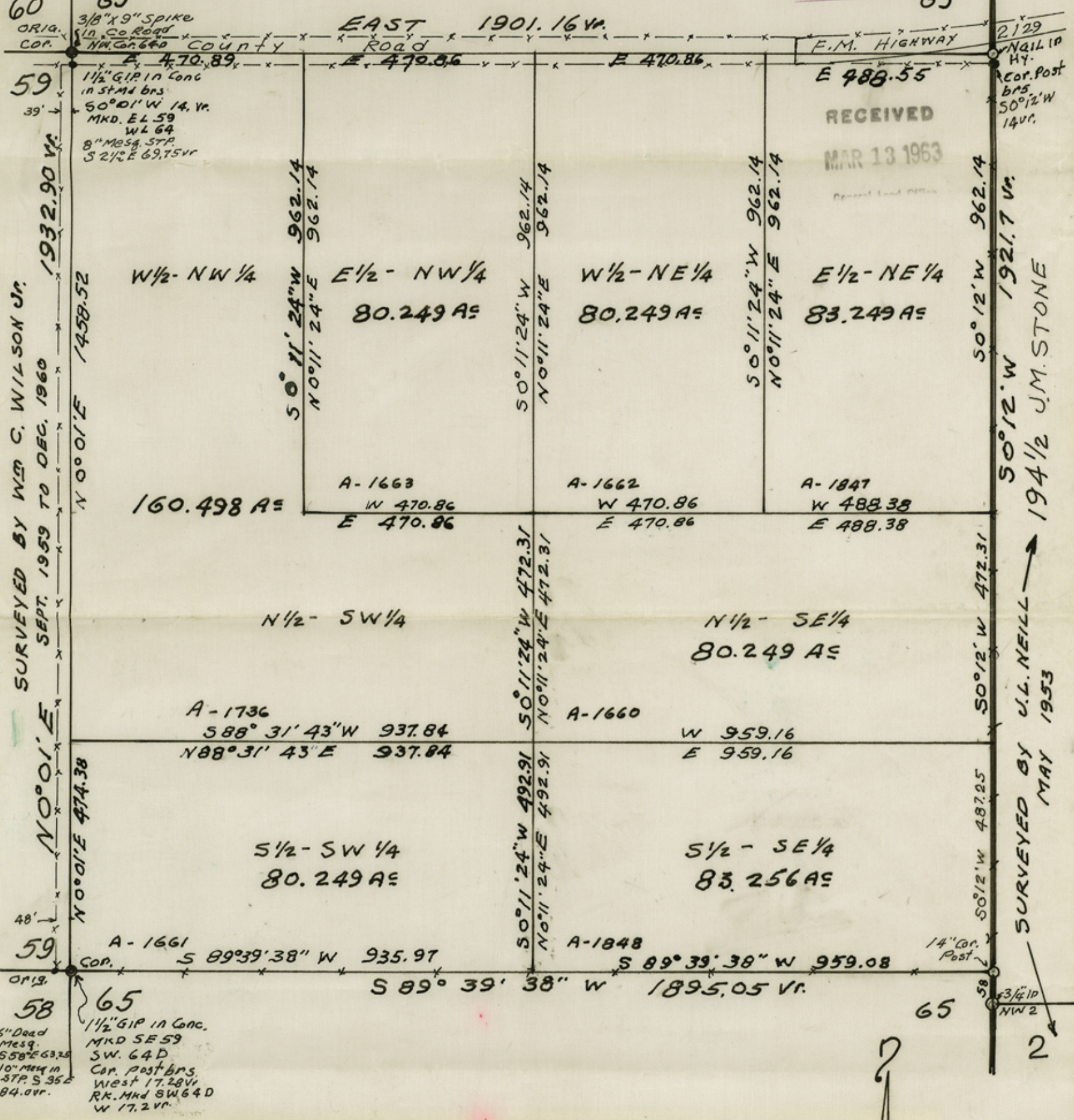
Sketch File # 41  
 Schleicher Co.

RECEIVED  
 FEB 21 1963  
 General Land Office

23668

FILED FOR RECORD  
 19 day of Feb 1963  
 at 1:00 o'clock P.M.  
 J.P. Knoche  
 Clerk County Court, Schleicher County, Texas  
 By D.C. Neill Deputy

PLAT SHOWING A SURVEY OF  
 SUR. 64, BLK. D, G.C. & S.F. R.R. CO.  
 SCHLEICHER COUNTY TEXAS.



SURVEYED BY ME ON THE GROUND,  
 FEBRUARY 14, 1963.

J.L. Neill

J.L. NEILL, REGISTERED PUBLIC SURVEYOR,  
 COUNTY SURVEYOR, SCHLEICHER COUNTY.



SCALE  
 1" = 237.6 Vr.



State of Texas

County of Schleicher

I, J. P. ENOCHS, County Clerk in and for said County, do hereby certify that the foregoing instrument dated the 14 day of Feb 19 63, with its certificate of authentication, was filed for Record in my office, on the 19 day of Feb A. D. 19 63 at 1:00 o'clock P. M., and duly recorded the 20 day of Feb A. D. 19 63 at 10:00 o'clock A. M., in the Plat Records of said County, in Volume 1 on Page 59

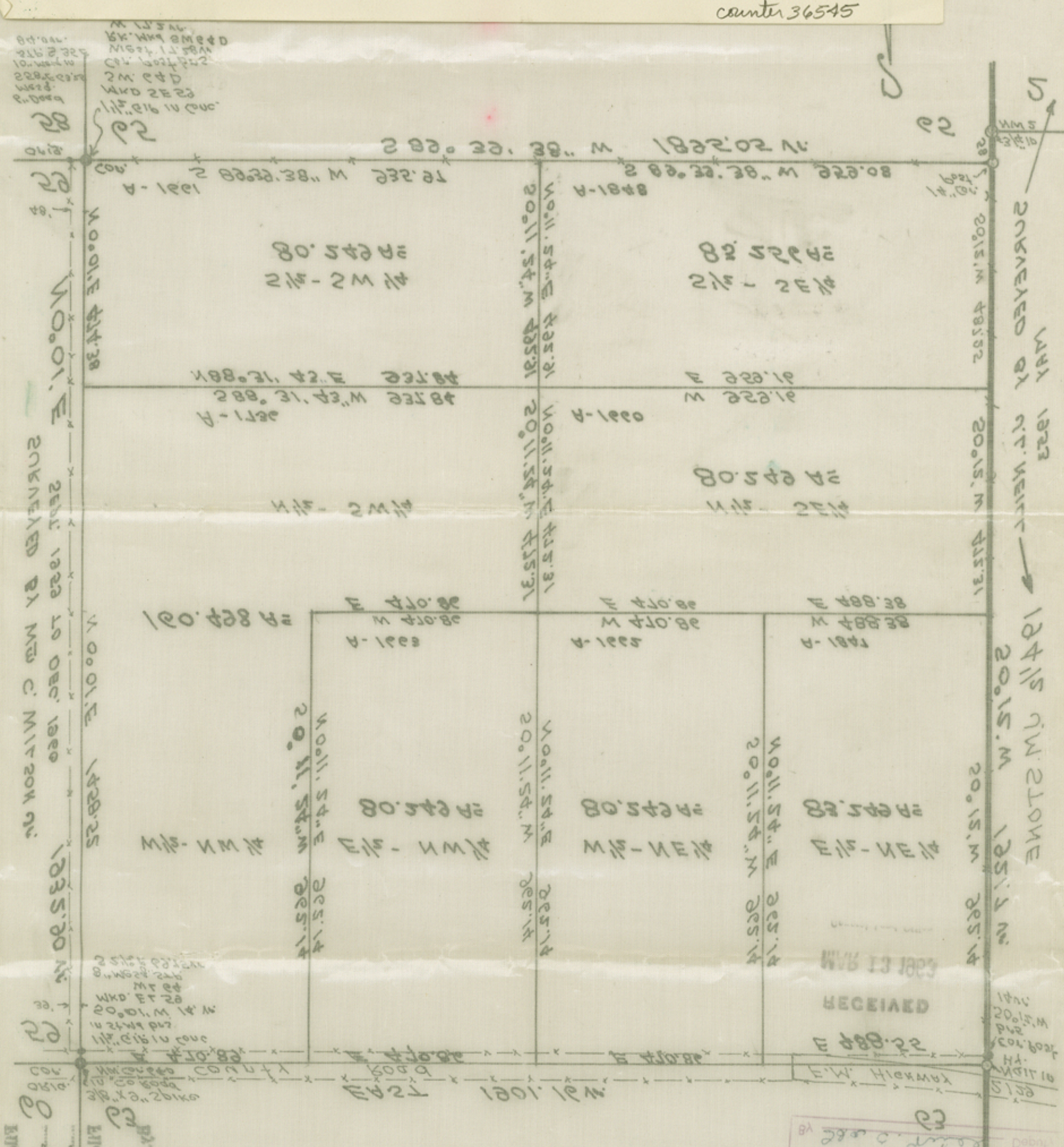
Witness my hand and the seal of the County Court of said County, at office in Eldorado, Texas, the day and year last above written

J. P. ENOCHS

Clerk County Court, Schleicher County, Texas.

By Ida C. Neill Deputy

counter 36545



SCHLEICHER COUNTY TEXAS  
 SUB. OF BLDG. CO. & SEC. BK. CO.  
 TO REVIEW A SURVEY OF  
 1/4 1/2 SECTION 14  
 T. 14 N. R. 12 E. S. 14  
 1063

HERRA SANDLER  
 1063

FILED FOR RECORD  
 FEB 21 1963  
 RECEIVED