

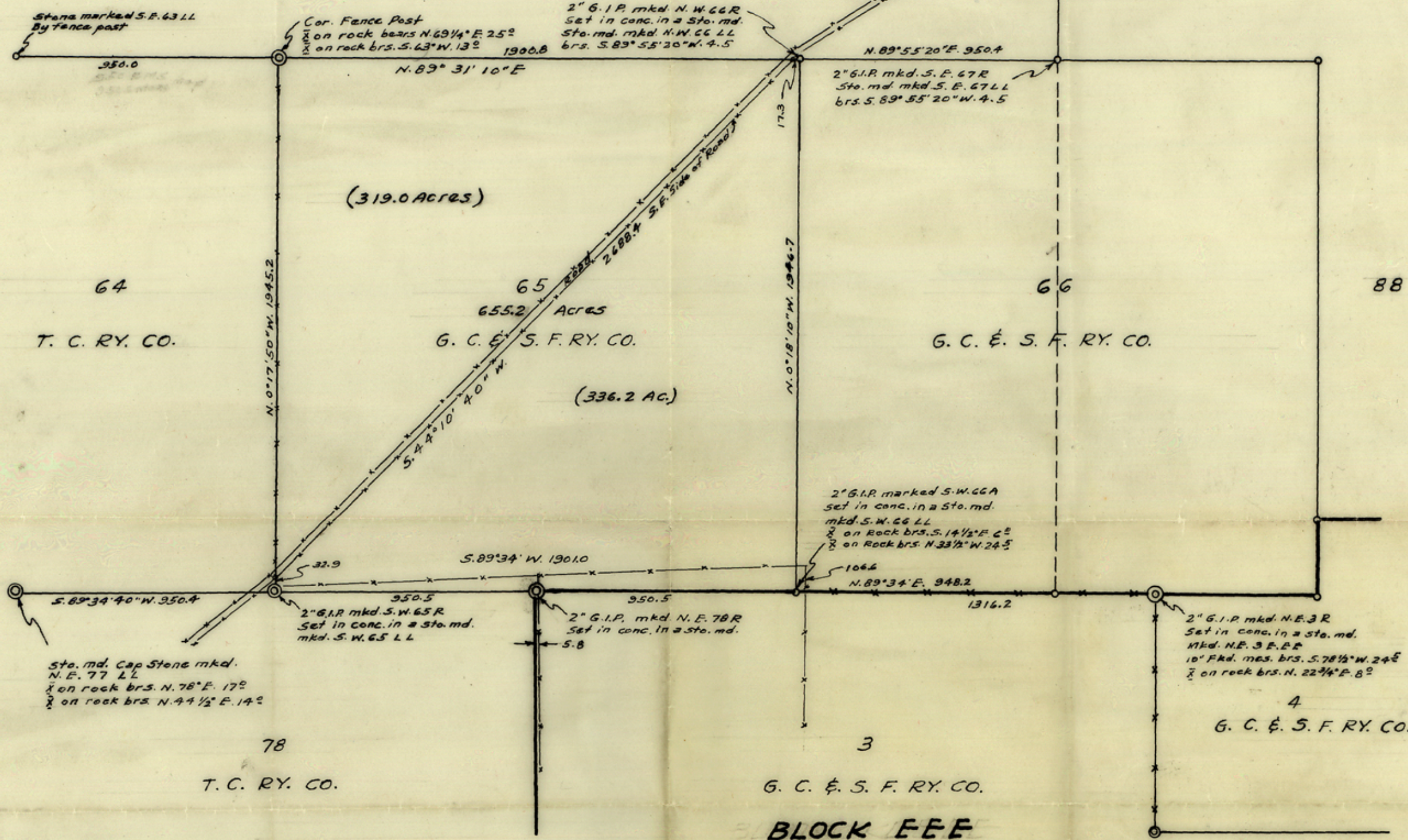
39247

RECEIVED  
FEB 25 1963  
General Land Office

67  
G. C. E. S. F. RY. CO.

87  
T. C. RY. CO.

BLOCK LL

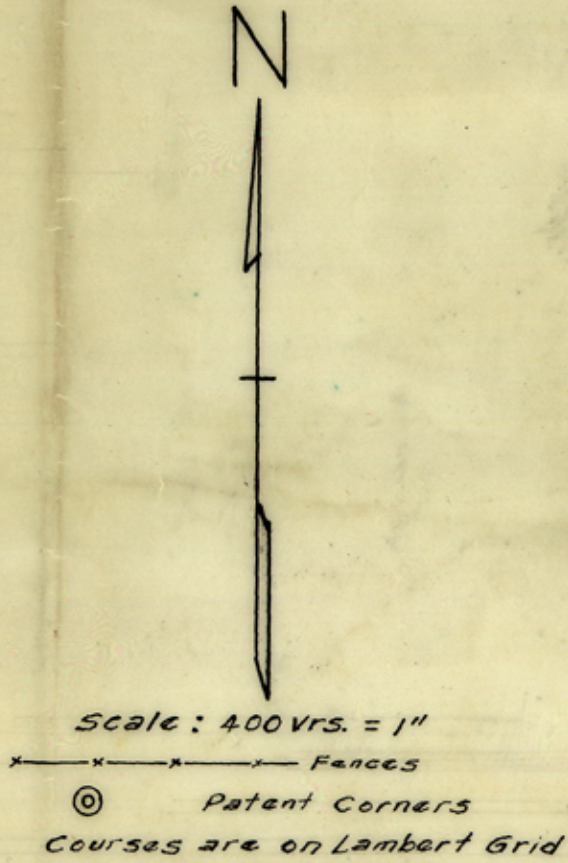


MAP SHOWING SURVEY OF SECTION 65  
BLOCK LL SCHLEICHER CO., TEX.

Surveyed by me on the ground in February 1963.

*Roscoe W. Simpson*  
Licensed State Land Surveyor  
12 South Irving Street  
San Angelo, Texas

BY *Roscoe W. Simpson*  
LEBBX SVRTER Comp. 1  
EJH9 3 10 1963  
Schleicher Comp. 1  
EJH No. 45



counter 36546

97203 1321003

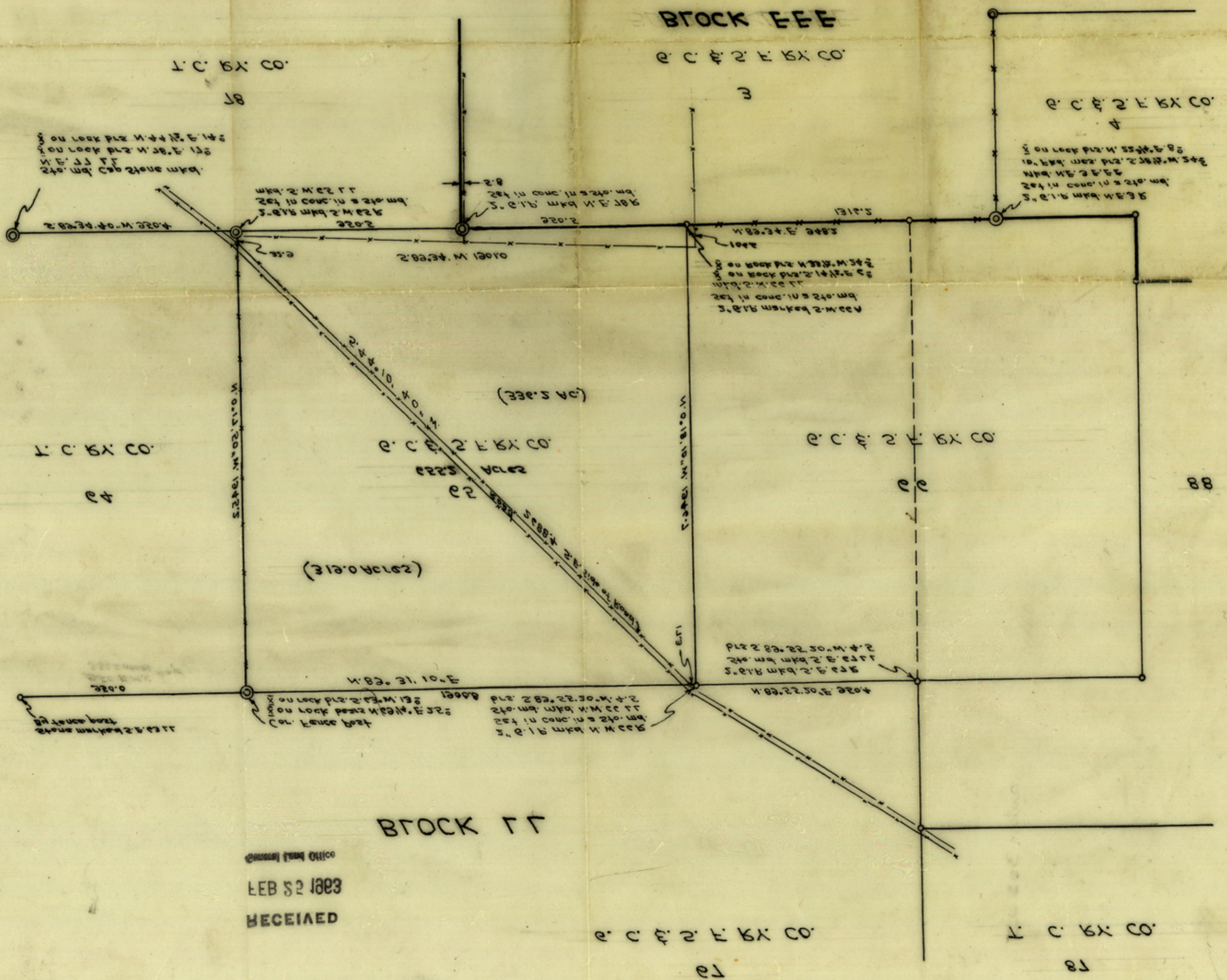
File No. 42  
Schleicher County

Filed July 3 1964  
JERRY SADLER, Com'r  
By R. Wisdom

Scale: 400' = 1" (mirrored)  
Fence (mirrored)  
Survey corner (mirrored)

MAP SHOWING SUBDIVISION OF SECTION 22  
BLOCK 77 SCHLEICHER CO., TEX.

Each plat in this group is to be approved by the State Surveyor General of Texas  
Richard M. Sadler  
Licensed State Surveyor  
15 South Irving Street  
Austin, Texas



RECEIVED  
FEB 22 1963