

324

PLAT SHOWING A SURVEY OF PORTIONS OF THE SAM E. JONES ESTATE SITUATED IN BLOCKS L & K, G H & S A RR CO. AND BLOCK V-17, SCHLEICHER COUNTY, TEXAS.

FILED FOR RECORD
17 day of June 1965
at 1:00 o'clock P. M.
J. L. Neill
Schleicher County Court, Schleicher County, Texas
By J. L. Neill, Deput.



SCALE
1" = 600 Vr.

This is to certify that the surveys shown on this Plat were made by me on the ground from June 1 to June 12, 1965.



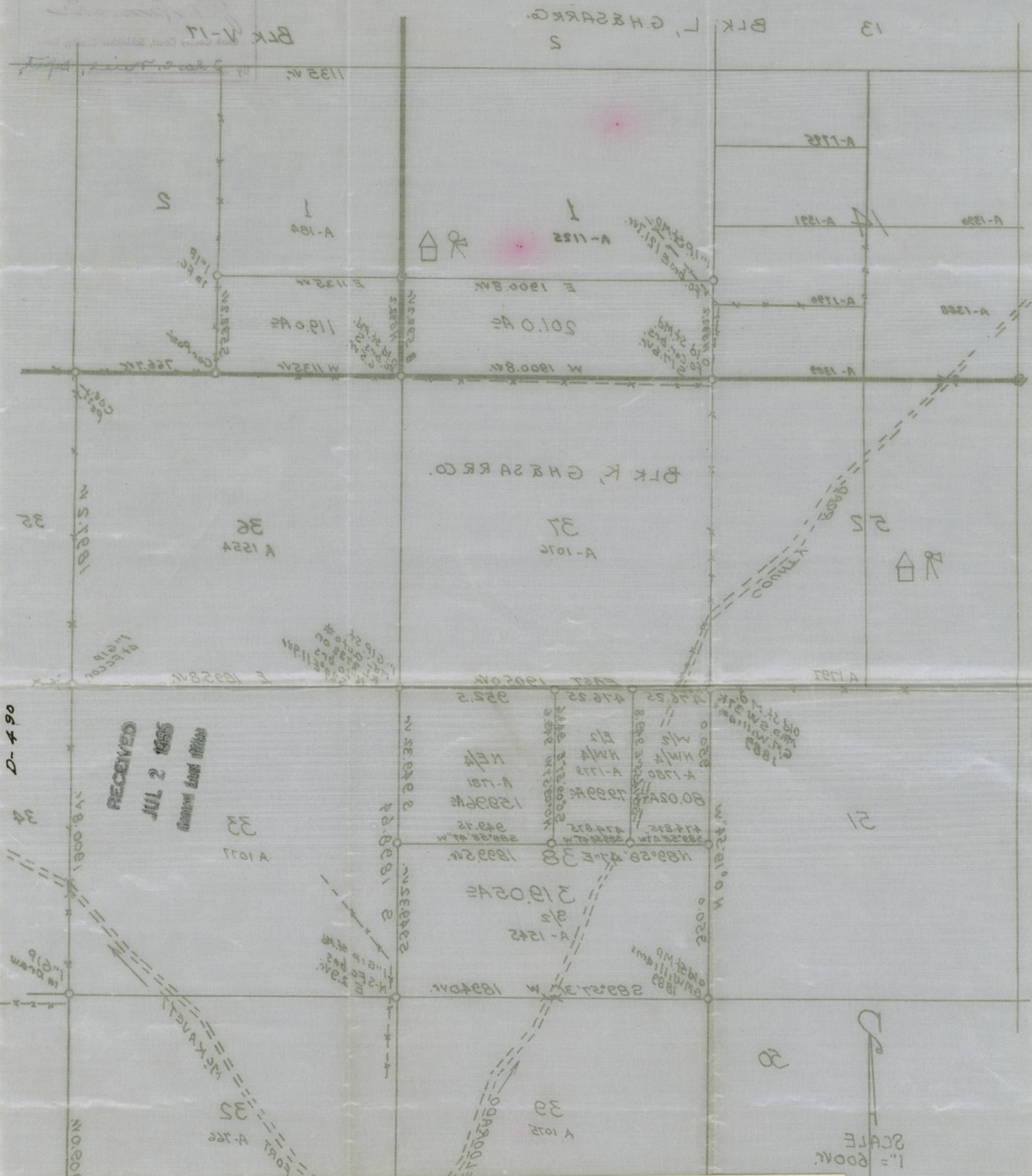
J. L. Neill
J. L. Neill, County Surveyor
Registered Public Surveyor
Schleicher County
Texas.

File No. 43
Schleicher County
Sketch File
Filed July 5 1965
By Henry Sadler, Comr.
Sec. 38 and adl. surveys in G.H. & S.A. Ry. Blk. K, Neill June 12, 1965

PLAT SHOWING A SURVEY OF PORTIONS OF THE
 SAM E. JONES ESTATE SITUATED IN BLOCKS
 L & K, G H & S A RR CO. AND BLOCK V-17,
 SCHLEICHER COUNTY, TEXAS.

FILED FOR RECORD
 17 day of June 1965
 1:00 P.M.

441



D-490

RECEIVED
 JUL 2 1965
 County Clerk's Office

SCALE
 1" = 600'

Certificate of Record

State of Texas
 County of Schleicher

I, J. P. ENOCHS, County Clerk in and for said County, do hereby
 certify that the foregoing instrument dated the June 17 day of 1965, with its certificate
 of authentication, was filed for Record in my office, on the 17 day of June A. D. 1965
 at 1:00 o'clock P. M., and duly recorded the 17 day of June A. D. 1965
 at 2:00 o'clock P. M., in the Survey Records of said County, in Volume 5
 on Page 324

Witness my hand and the seal of the County Court of said County, at office in Eldorado, Texas, the day and year last above written

J. P. Enoch
 Clerk County Court, Schleicher County, Texas.

By J. C. Muel Deputy

counter 36549

