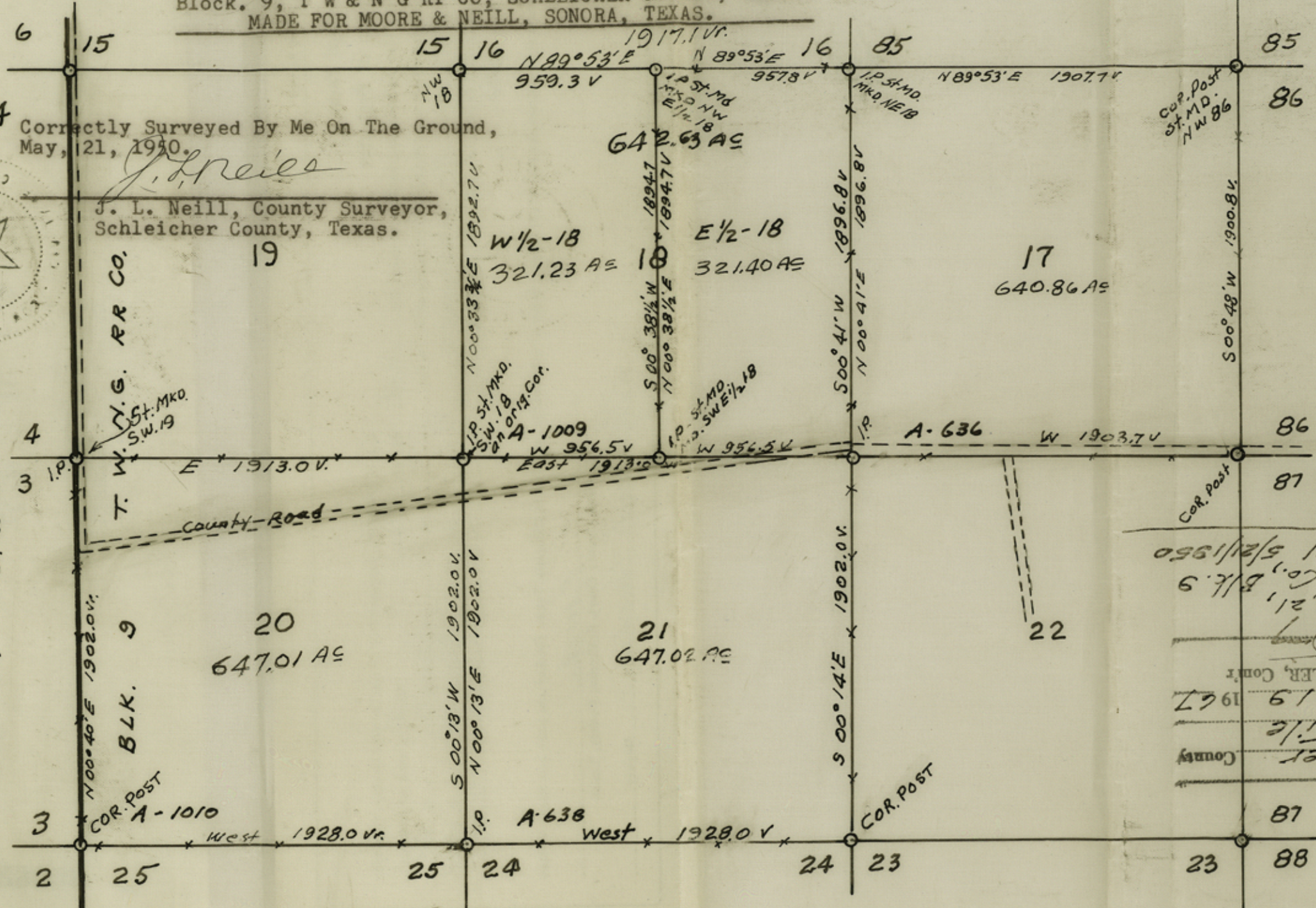


PLAT SHOWING A SURVEY OF SURVEYS 17, 18, 20 & 21,
Block. 9, T W & N G RY CO, SCHLEICHER COUNTY, TEXAS.
MADE FOR MOORE & NEILL, SONORA, TEXAS.



Correctly Surveyed By Me On The Ground,
May, 21, 1950.

J. L. Neill, County Surveyor,
Schleicher County, Texas.

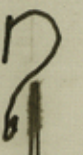
RECEIVED
DEC 19 1967
General Land Office

D-262
P 282
355

BLK. A, H.E. & W. T. R.R. CO.

W.G. R.R. CO.

BLK. 9



SCALE
1" = 600 VR.

File No. 44
Schleicher
County
Sketch File
Filed Dec. 19 1967
By JERRY BADLER, Contr.
By [Signature]
Sec. 17, 18, 20, 21, Blk. 9
T.W. & N.G. Ry. Co.
By J. Neill 5/21/1950

RECEIVED
DEC 17 1967

counter 36550

44

FILED FOR RECORD

'67 DEC 18 AM 10:57

29539

J. P. ENOCHS
COUNTY CLERK
COUNTY OF SCHLEICHER
TEXAS

Certificate of Record

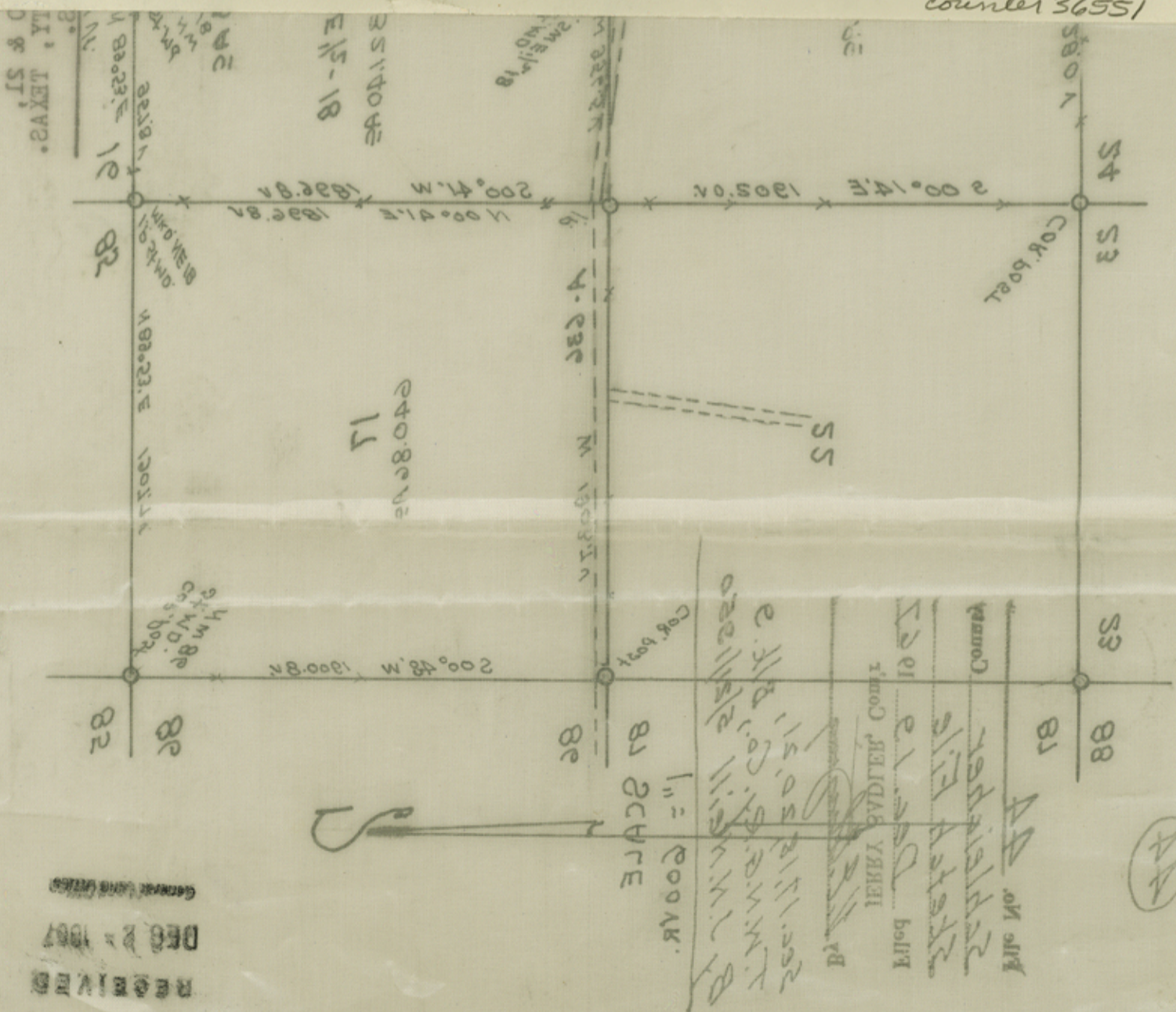
State of Texas
County of Schleicher

I, J. P. ENOCHS, County Clerk in and for said County, do hereby
certify that the foregoing instrument dated the 21st day of May, 1950, with its certificate
of authentication, was filed for Record in my office, on the 18th day of December, A. D. 1967
at 10:57 o'clock A. M., and duly recorded the 18th day of December, A. D. 1967
at 2:00 o'clock P. M., in the Survey Records of said County, in Volume 5
on Page 355

Witness my hand and the seal of the County Court of said County, at office in Eldorado, Texas, the day and year last above written

J. P. Enoch
Clerk County Court, Schleicher County, Texas.
By Wynemad Buchner Deputy

counter 36551



RECEIVED
DEC 18 1967
GENERAL INVESTIGATION

(44)