

Shelby Co. 11.

3 sketches numbered 1.

counter 36613

Stephen Castleberry. Certificate

I do hereby certify That The Certificate Said on 640 Acres  
of Land On The waters of Attoiac about 25 Miles N65°W  
from Shelbyville Was his own Headright Certificate N<sup>o</sup>.  
Clas 2 Issued by The Board of Land Commissioners of  
Shelby County for 1280 Acres of Land and dated 5<sup>th</sup> July 1838.  
The records of my Office shew That the above Certificate  
was lifted by Castleberry. off this survey.

A. G. Kellogg ass<sup>o</sup> of J. Strickland

I further certify that the Certificate Said on a League of Land  
adjoining Andrew McFadden N45°W from Shelbyville by A. G. Kellogg  
Was James Strickland N<sup>o</sup> 290 Issued by the board of Land  
Commissioners of Shelby County. to said James Strickland  
Given from under my hand at Office in the Town of  
Shelbyville this 3<sup>rd</sup> day of Sept. 1839.

NB Kellogg Survey  
Dated 27<sup>th</sup> March 1838

Geo W Locke Surveyor  
of Shelby Co. Tex.

counter 366A

10 11

Shelby County

Rec<sup>d</sup> Sept. 12 / 39

N. W. corner

us'

counter 36615



**Explanation**

Nancy Mays, not on record here at this office  
 Andrew P. of not found on record " "  
 Sarah Shee " " " "  
 Saml W. Nottingham lies in Nacogdoches Co  
 Simon T. Barnes, lies in Panola  
 Carl Healtuck in " "  
 John Mays & Co. owners of slaves, not on record here  
 There is no connections for these slaves in office  
 Scott Karns, Certificate checked, lay off of John Barnes Labor  
 and covered Daniel Brown, T. Saurbeck, part of J. Timmons See Map.  
 Charles A. Tator lies 4 miles S. W. from Logan port  
 Joins, or lies West of Sidney & Pernington Se. of Menon Smith  
 G. to Bryant, & A. J. Griffin, not having come for them  
 in their proper place, I will give a sketch below.



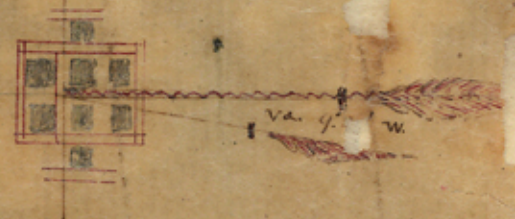


*See sketch file  
3-16-57*

118

Scale 1/1000 Van to N. Inch.

SHELBYVILLE



I do hereby certify that the above and foregoing sketch is a correct representation of the surveys as they lay upon the ground planned entirely from the records of my Office. Given from under my hand at Office this 3. day of Sept. 1857.

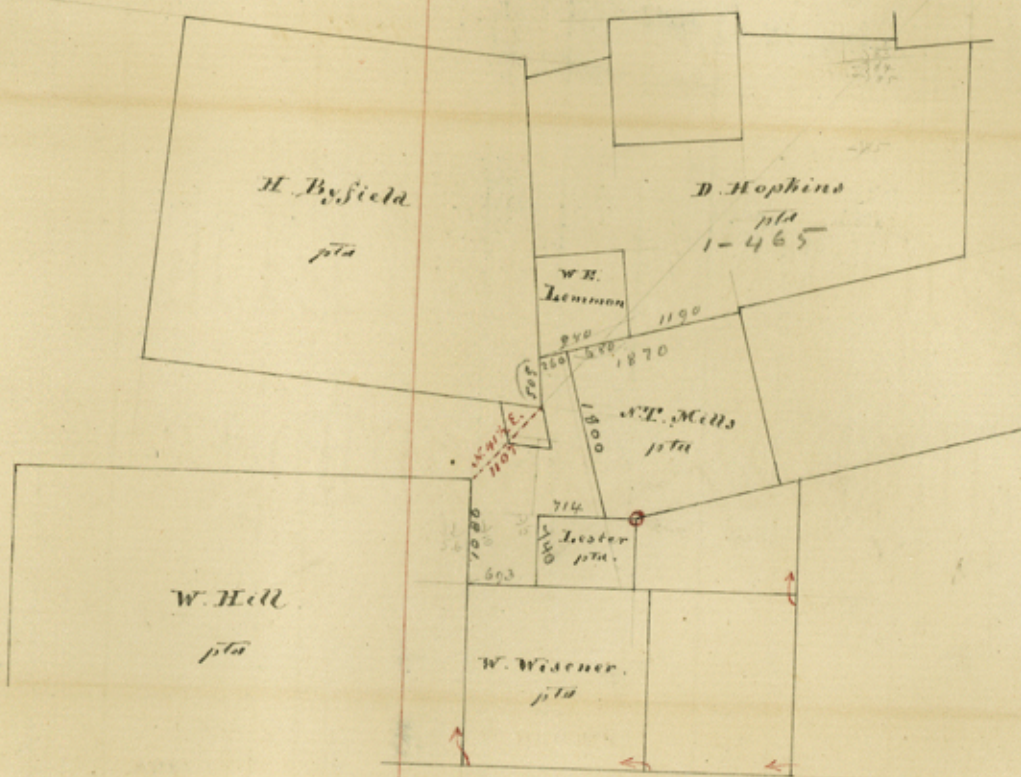
*File 1 Sept. 20/57  
G. W. Coffey*

Geo. W. Locke,  
County Surveyor of Shelby Co. Tenn.

*counter 36617*

341

See corrected field notes in file 1-465  
connection between Byfield and Hill forced  
by calculation 541



Counter 36618

File #6

Shelby Leo

Mayor's certificate  
on Stephens Castleberry's  
library.