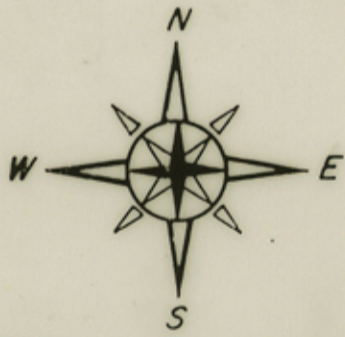
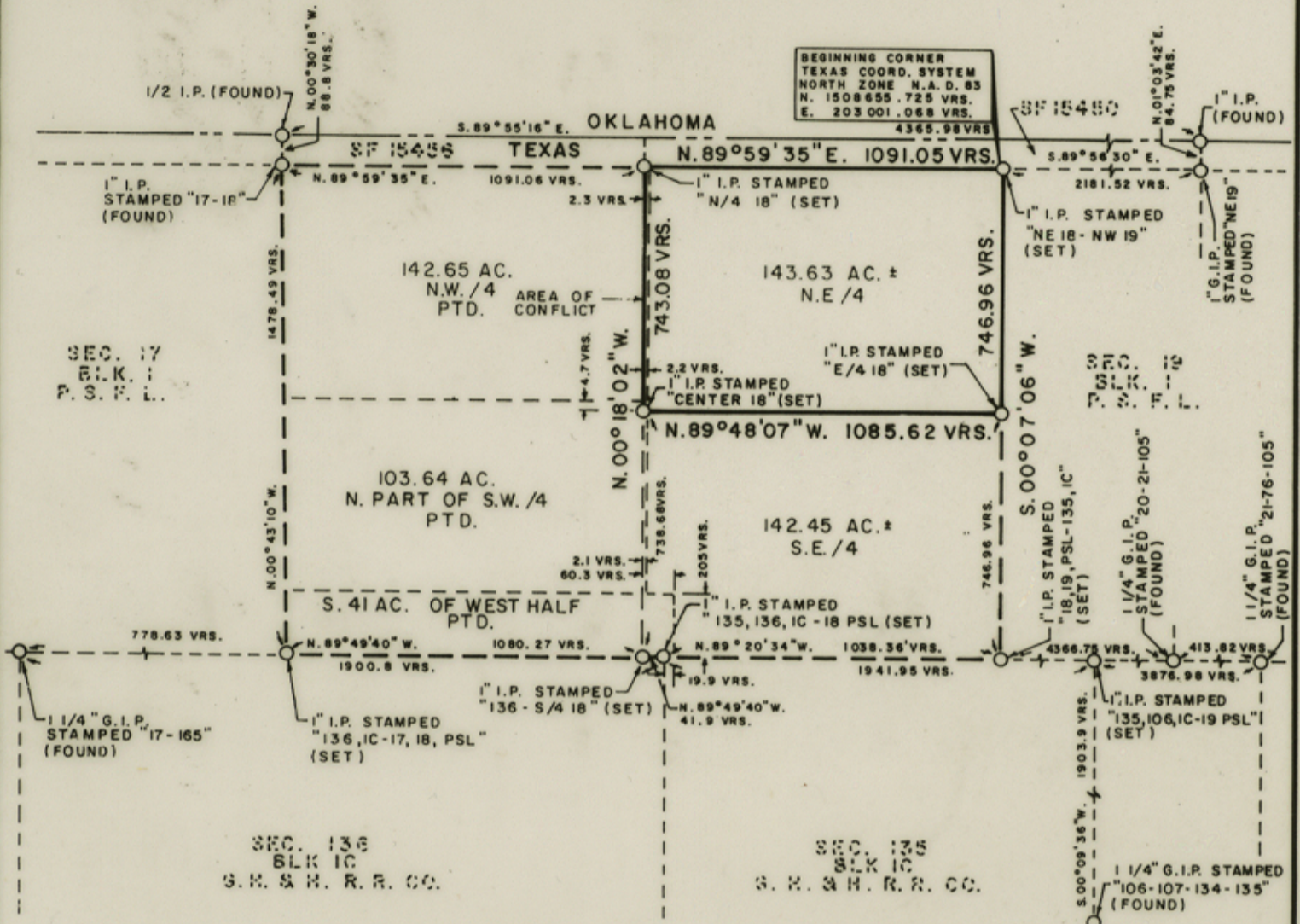


**SHERMAN COUNTY, TEXAS  
NORTHEAST QUARTER OF SECTION 18  
BLOCK 1, PUBLIC FREE SCHOOL LAND**



SCALE: 1" = 500 VARAS

NOTE: COORDINATES FOR THE ABOVE "BEGINNING CORNER" ARE REFERENCED TO THE TEXAS COORDINATE SYSTEM - NORTH ZONE - NORTH AMERICAN DATUM 1983, USING THE N.G.S. TRIANGULATION STATION "HARDY 2", A MAPPING ANGLE OF -0.103997 AND A COMBINED SCALE FACTOR OF 1.000025584.

REPORT: SEE SHERMAN Co. Sk. File 8  
 File No. Sketch File 5  
SHERMAN County  
 Filed Dec. 16 19 93  
 By GARRY MAURO, Com'r  
Douglas Howard



**EXHIBIT "A"**

SEPTEMBER 29, 1993

counter 36723

JOB NO. 920777 FILE NO. 18-1-PFSL, SHERMAN