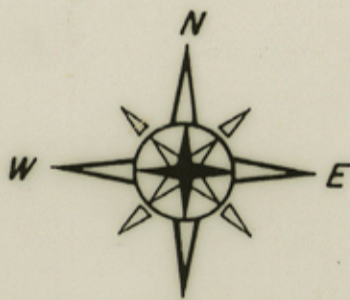
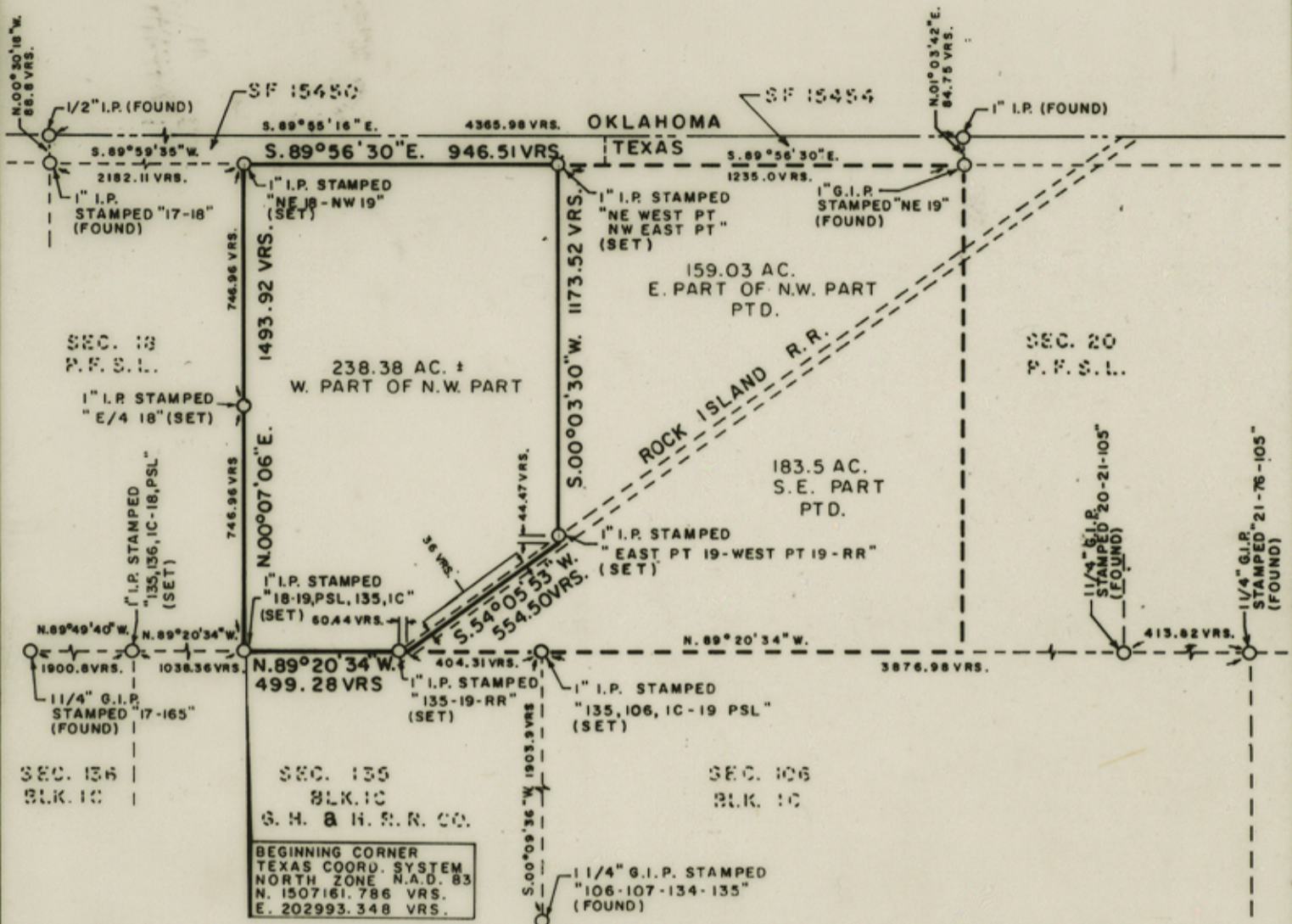


# SHERMAN COUNTY, TEXAS

## WEST PART OF NORTHWEST PART OF SECTION 19 BLOCK 1, PUBLIC FREE SCHOOL LAND



SCALE: 1" = 500 VARAS

NOTE: COORDINATES FOR THE ABOVE "BEGINNING CORNER" ARE REFERENCED TO THE TEXAS COORDINATE SYSTEM - NORTH ZONE - NORTH AMERICAN DATUM 1983, USING THE N.G.S. TRIANGULATION STATION "HARDY 2", A MAPPING ANGLE OF  $-0.103997$  AND A COMBINED SCALE FACTOR OF 1.000025584

REPORT - SEE SHERMAN SK.F. 8

File No. Sketch File 7

Sherman County

Filed Dec. 16 19 93

By GARRY MAURO, Com'r  
Douglas Howard

*Jimmie Maul*

### EXHIBIT "A"

SEPTEMBER 29, 1993

*counter 36725*