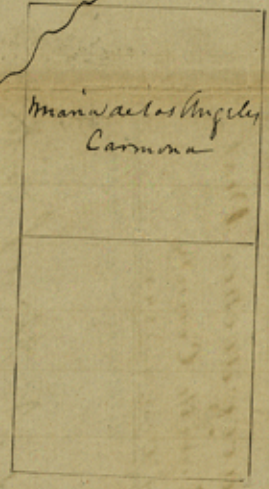




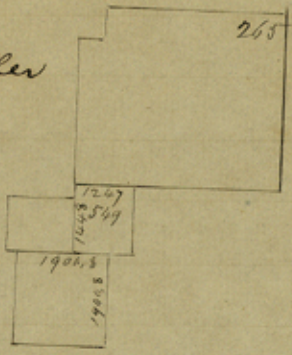
1300 E. 46.65 mi.



N E of Tyler



NW of Tyler



The above sketch is correctly taken from the Map of this District.

A. C. Ketchum
Nov 21/48

A. W. Nelson
Plt., D. C.

Rec'd Decr 4. 1848
T. S.

File 7.

1858

File 20. 7.

Nacogdoches Dist
Smith County

Received Decr 4. 1848

Plotted on map Feb. 1858

N. E. and N. W. of Tyler.

A. A. Nelson, Nov. 21, 1848.

counter 36760