

- 184 H. C. Lawrence
- 185 J. Mast
- 290 S. Cozine
- 304 C. N. Garrett
- 395 J. Williams
- 411 N. Henderson
- 466 N. Chile
- 574 W. Chancellor
- 144 521 M. Gingsby
- 304 698 W. L. McKinley
- 531
- 290

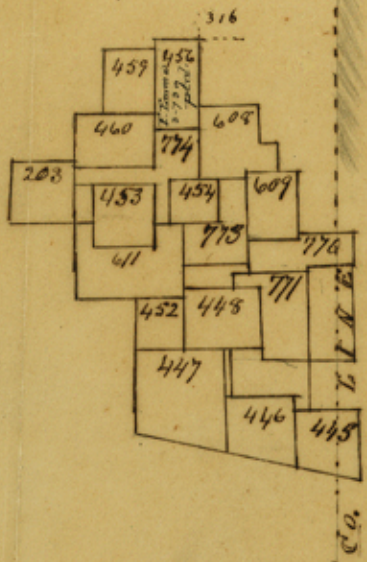
I certify that the above is correct representation  
of the several surveys therein named  
16<sup>th</sup> May 1850

Thos. J. Flays  
County Surveyor S. C.

counter 36765

#

- 456 Ferdinand Emma
- 459 John Love
- 460 J. E. Deane
- 203 W. L. Robinson
- 445 G. Shaul
- 447 E. Daniel
- 446
- 611 DeWason
- 448 W. P. Bulcher
- 609 J. L. Swin P.
- 770 W. H. Fowler P.
- 771 Robert Wilson
- 773 W. W. Burrow P.
- 774 J. De Adams P.



I Certify that the above is a correct  
 representation of the several  
 surveys therein named  
 Styles

May 16<sup>th</sup> 1850

John J. Hays  
 County Surveyor  
 Smith County

27th Dec 1850  
 J. J. Hays



#2

Sketches 10 File 10/58  
34

Nacogdoches

Smith County

Received, July 5, 1850.

South and S. E. of Tyler.

Thos Hays' SKS.

Dated May 16, 1850.

counter 36767