



71

G. H. Walch  
Comr. Genl. Office  
City of Austin

County Surveyors Office  
City of <sup>NY</sup> Tyler <sup>TX</sup> February 16<sup>th</sup> 1880

Dear Sir

I herein enclose my quarterly reports beginning 16<sup>th</sup> April, 1876 ending 16<sup>th</sup> Feb. 1880

I must confess I was not aware of there being such an act requiring County Surveyors to make quarterly reports to your office, until recently I received from our County Judge a copy of Revised Statutes of Texas adopted by the regular Session of the Sixteenth Legislature A. D. 1879

There is one survey of 42 acres Jesse Whitmire N<sup>o</sup> 1169. I am not certain that it is correctly located. The field notes as transcribed from the records of Magdocks District gives the beginning of the <sup>N<sup>o</sup> 14</sup> K. H. Muse Survey 1000 W. from N. W. cor. of the M. B. Clark Survey N<sup>o</sup> 76.

The <sup>N<sup>o</sup> 14</sup> field notes of the Twin Beland Survey begins 657 Varas E. from the N. W. cor. of the <sup>N<sup>o</sup> 14</sup> K. H. Muse Survey then North E. S. & W. to the beginning which will embrace the land of the Clark Survey. Best I have sketched it as running N & W

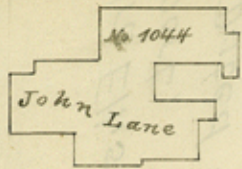
counter 36772

13.

Smith Co  
Surveyors report.

Ira Ellis' Quarterly Re-  
port,  
Dated Feb. 16, 1880.

Ira Ellis.  
2/16/80



which gives a vacancy between the Clark & Belard  
I wish you to forward me a copy of the Clark, the  
H. H. Innes & Belard surveys. I am very sure the  
Record in this Office as transcribed are erroneous.

Very Respectfully

Wm Ellis, Secy. S. County

13.

Smith Co

Leroy's report.

Ira Ellis' Quarterly Re-  
port,

Dated Feb. 16, 1880,

Ira Ellis.

2/16/80

counter 36774

7-3