

tw

File No. SKETCH FL. N<sup>o</sup> 43

STARR County

SURVEYORS REPORT

Filed Nov 5<sup>th</sup>, 1944

BASCOM GILES, Com'r

William Shinniff  
File Clerk

24

J. H. MAY  
COUNTY SURVEYOR AND ENGINEER  
STARR COUNTY  
RIO GRANDE CITY, TEXAS

counter 36991



To the  
Hon. Bascom Giles,  
Commissioner General Land Office.

Nov. 1st, 1941.

Report of a re-survey of Survey  
No. 920 and the North lines of  
Porciones 96 to 100 inclusive,  
also vacancies North of Porcion  
96, 97 and 98.

Object of survey, to determine the true lines of survey No. 920 and North line of Porciones 96 to 100, also any vacancies between said surveys and Porciones.

Made for Dee Davenport by virtue of his ownership of survey No. 920, and on application of Braulia G. de Garcia, Willie Hermann et al, and Dee Davenport, Filed with Commissioner of General Land Office, as Good Faith Claimants.

Data for survey, From County Surveyors records and surveys ordered and approved by District Court, and old Field Notes of J. S. Monroe dated April 1904, showing he located the North lines of said Porciones by backing the north lines on said porciones in from north lines of porciones to the west, said north lines being recognized by all surveyors surveying in that area until recently they were found to be in error.

The surveys for the Patented field notes of the above mentioned porciones were made by J. C. Eivet in the month of May and June 1879, not being able to find any of the corners called for by him of the North lines and his beginning points being on the changing river bank, also working from West to East on each porcion and calling for the Rio Grande City-Brownsville road on each porcion line, I attempted to reconstruct the porciones in the same manner.

Beginning at a point on an old high bank of the river where I found an old Mesquite tree with three hacks (Very old marks believed by me to be Eivets marks) said point being 3673 vs. ? from the present river bank, Thence running with the East line of porcion 95 (As partitioned by Dist. Court) N. 9-18' E. at 2431 vs. cross Rio Grande City-Brownsville road at 5507 vs. cross Arroyo del Salado at 21564 vs. pass an iron pin set by surveyor Court partition of Porcion 95, at 22577 vs. pass a post for the N. E. corner of survey No. 970 at 22996 vs. set an iron pipe for the N. W. corner of porcion 96, said pipe being 1368 vs. south of Monroe corner for porcion 96 and being 20565 vs. north of the Rio Grande City-Brownsville road as called by Eivet;

Thence S. 80-45' E. at 680 vs. set an iron pipe for the most Easterly S. E. corner of survey No. 541 and the S. W. corner of survey 973, at 1000 vs. set an iron pipe for the N. E. corner of porcion 96 in the West line of Porcion 97, said pipe being 20694 vs. N. 9-20' E. from the Rio Grande City-Brownsville road;

Thence with the West line of porcion 97 and East line of survey 973, N. 9-20' E. at 1368.2 vs. pass the S. E. corner of survey 963 and N. E. corner of survey 973, at 1471 vs. set and iron pipe for the N. W. corner of porcion 97 and S. W. corner of survey No. 974, said pipe being 22165 vs. N. 9-20' E. from the Brownsville Rio Grande City Road;

Thence S. 80-45' E. at 1401 vs. set an iron pipe for the N. E. corner of porcion 97 and N. W. corner of porcion 98, said pipe being 22404 vs. N. 9-20' E. from the Rio Grande City-Brownsville road, as called by Eivet, at 1544.9 vs. set an iron pipe for the S. E. Corner of 974 and S. W. corner of 975, at 1826.8 vs. set an



iron pipe for the S. E. corner of survey 975 and S. W. corner of survey 976, at 2704 vs. set Mesquite post in the West line of porcion 99, for the S. E. corner of survey 976 and N. E. corner of porcion 98, said post being 23025 vs. N. 9-20' E. from the Rio Grande City-Brownsville road.

Thence N. 9-15' E. with the East line of survey 976 and West line of porcion 99, at 1077.3 vs. set a Mesquite post for the N. E. corner of survey 976 and the most Southerly S. E. corner of Survey 920, at 1436.4 vs. an old Mesquite post Mkd. P99NW., a corner of Survey 920 and the N. W. corner of porcion 99; (I believe this post was set by Monroe in 1904) said post being 24461.4 vs. from the Rio Grande City-Brownsville road.

Thence S. 80-46' E. at 570.5 vs. a pipe and Mesquite post for the S. E. corner of survey 920 and S. W. corner of survey 962, at 1305 vs. an iron rod in the West line of survey 886, the S. E. corner of survey 962, and the N. E. corner of porcion 99;

Thence S. 9-15' E. 640.5 vs. to an iron rod and post in corner of fence for the N. W. corner of porcion 100;

Thence with fence S. 80-46' E. 1003 vs. corner of fence for the N. E. corner of porcion 100, being N. 9-24' E. 958.3 vs. from N. W. corner of porcion 38, 23993 vs. from a stone set on round hill by Eivet, and 24191 vs. from the Rio Grande City-Brownsville road.

Returning to the most Easterly S. E. corner of survey 541 and running N. 9-20' E. 967.7 vs. to the N. E. corner of survey 541 for a corner hereof;

Thence with the North line of survey 541 N. 80-40' W. 305 vs. to the S. E. corner of survey 540 for a corner hereof;

Thence with the East line of survey 540, N. 9-15' E. 400 vs. to the S. W. corner of survey 963, for the N. W. corner hereof;

Thence with the south line of survey 963, S. 80-45' E. 625.6 vs. to a post in the West line of porcion 97, the S. E. corner of survey 963, for the N. E. corner hereof;

Thence with the West line of porcion 97 S. 9-20' W. 1368.2 to a pipe, the N. E. corner of Porcion 96 for the S. E. corner hereof;

Thence with the North line of Porcion 96, N. 80-45' W. 320 vs. to the place of beginning, said described survey being No. 973.

Survey No. 920.

Beginning at an old post Mkd 540-920 N. in corner of fence, the N. E. corner of survey 540 and N. W. corner hereof;

Thence with fence and East line of survey 540, S. 9-15' W. 692.4 vs. to a post, the N. W. corner of survey 963 for the S. W. corner hereof;

Thence with the North line of survey 963, S. 81-21' E. at 625.6 vs. pass the N. E. corner of survey 963 and N. W. corner of survey 974, at 2170.5 vs. pass the N. E. Corner of survey 974 and N. W. corner of survey 975, at 2452.4 vs. a pass the N. E. corner of survey 975 and N. W. corner of survey 976, at 3329.6 vs. a Mesquite post in the West line of Porcion 99, the N. E. corner of survey 976 for a S. E. corner hereof;



Thence with the West line of porcion 99, N. 9-15' E. 359.1 vs. to a post Mkd. P99NW., the N. W. corner of porcion 99 for a corner hereof;

Thence with the North line of porcion 99 S. 80-46' E. 570.5 vs. to a pipe and Mesquite post, the S. W. Corner of survey 962, for a S. E. corner hereof;

Thence with the West line of survey 962, N. 9-14' E. 342 vs. to a post in fence mkd. 92ONE. the N. W. corner of survey 962 for the N. E. corner hereof in the South line of survey 533;

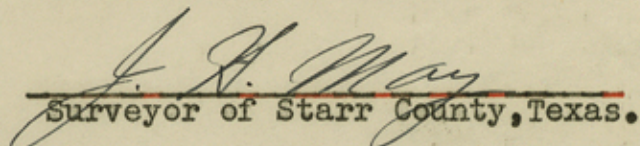
Thence with the south line of survey 533 and fence, N. 81-21' W. at 3042 vs. pass an old post mkd. 534-5S, at 3900 vs. the place of beginning.

This leaving a vacancy of 509 acres between the South line of survey 920 and the North lines of Porciones 97 and 98, and the East line of survey 963 and West line of Porcion 99, said vacancies being surveys 974 to 976 inclusive on the accompanying Map and field notes.

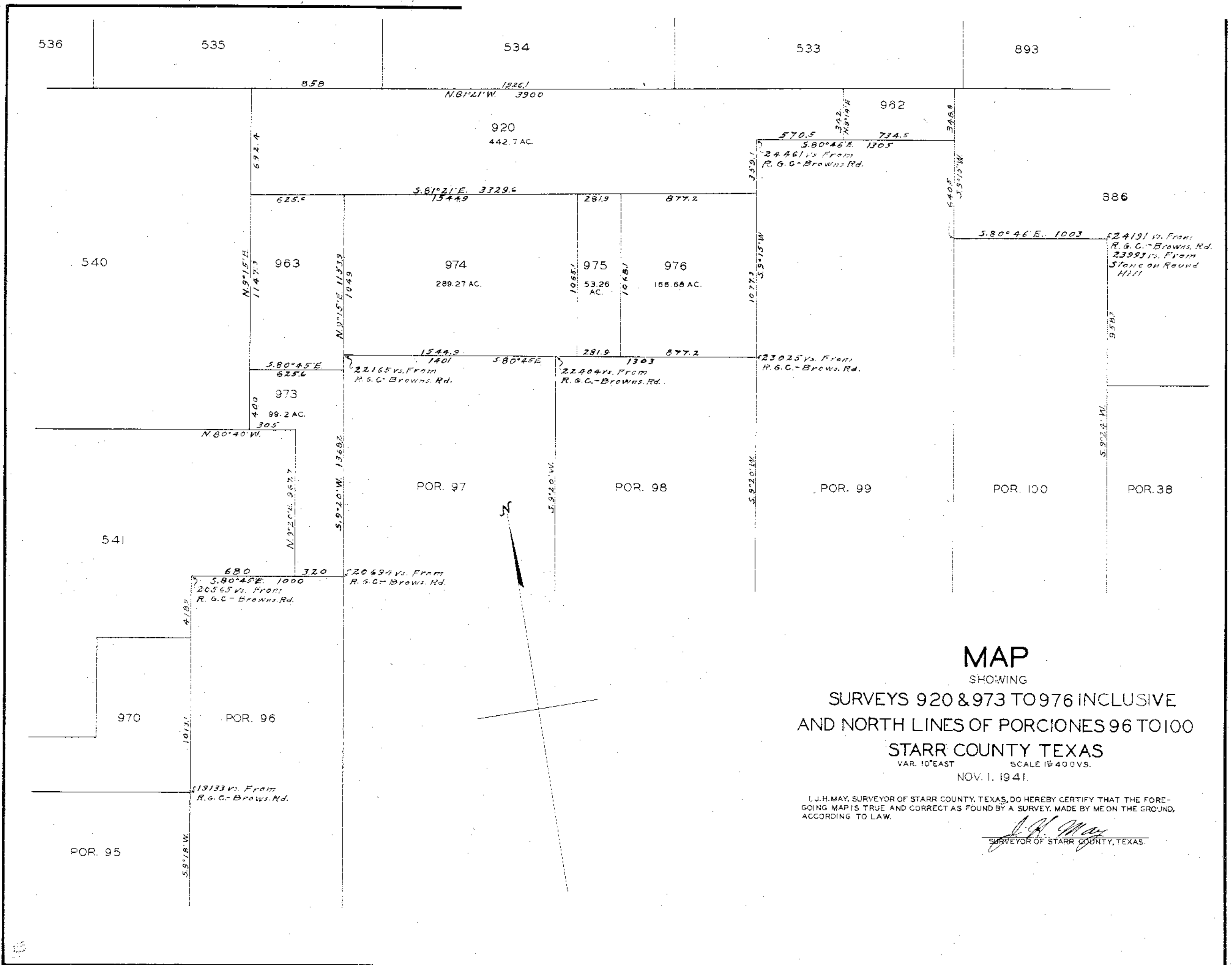
Accompanying this report is a map showing the North lines of porciones 96 to 100 and Survey 920 with vacancies between, with corrected field notes for survey 920 and field notes for surveys 973 to 976 inclusive.

The N.W.corner of survey 920 is S.41 Deg.E.1.8 miles from the nearest oil well and the N.E.corner of porcion 98 is N.5 Deg.W. 3 miles from the nearest producing oil well.

Respectfully submitted,

  
Surveyor of Starr County, Texas.





**MAP**  
 SHOWING  
**SURVEYS 920 & 973 TO 976 INCLUSIVE**  
**AND NORTH LINES OF PORCIONES 96 TO 100**  
**STARR COUNTY TEXAS**  
 VAR. 10° EAST      SCALE 1" = 400' VS.  
 NOV. 1, 1941.

I, J. H. MAY, SURVEYOR OF STARR COUNTY, TEXAS, DO HEREBY CERTIFY THAT THE FORE-  
 GOING MAP IS TRUE AND CORRECT AS FOUND BY A SURVEY, MADE BY ME ON THE GROUND,  
 ACCORDING TO LAW.

*J. H. May*  
 SURVEYOR OF STARR COUNTY, TEXAS.