

Sk. File No. 48A

Starr County
Sections 303, 304 T.T. Ry. Co.
16 miles N. 19° W. from Rio Grande
City

Filed November 9, 1950

BASCOM GILES, Com'r

W. von Rosenberg
File Clerk

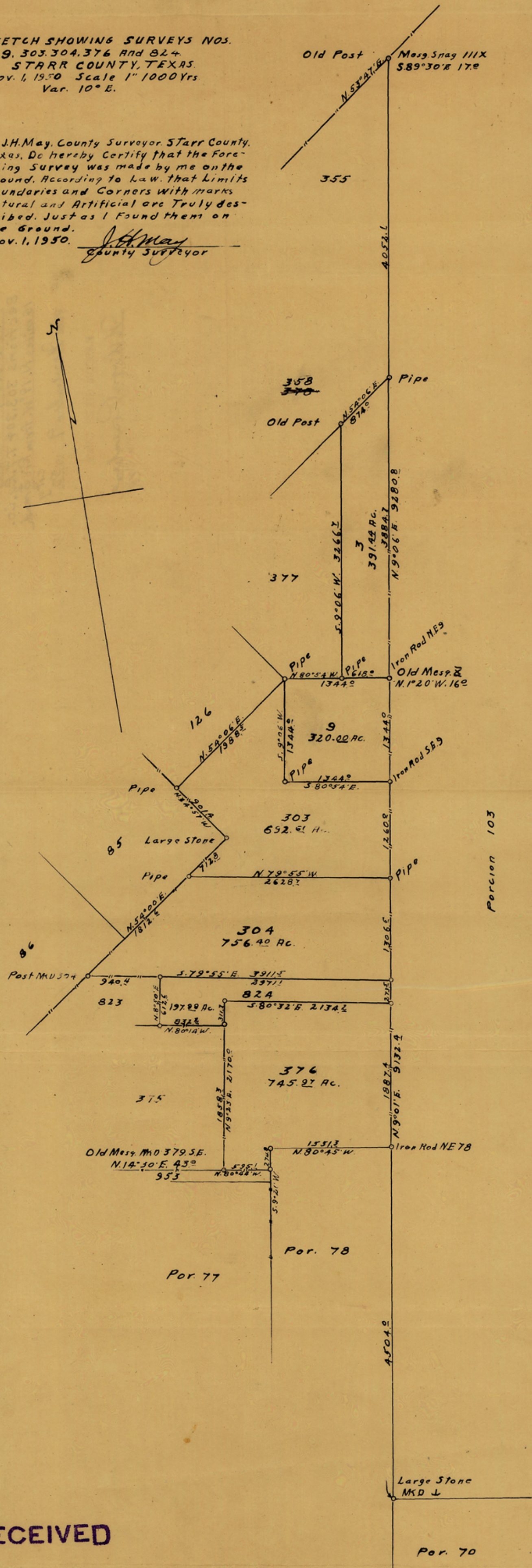
RECEIVED

counter 37005

SKETCH SHOWING SURVEYS NOS.
3, 9, 303, 304, 376 AND 824.
STARR COUNTY, TEXAS.
Nov. 1, 1950 Scale 1" = 1000 Yrs
Var. 10° E.

I, J.H. May, County Surveyor, Starr County,
Texas, Do hereby Certify that the Fore-
going Survey was made by me on the
Ground, According to Law, that Limits
Boundaries and Corners with Marks
Natural and Artificial are Truly Des-
cribed, Just as I Found them on
the Ground.
Nov. 1, 1950.

J.H. May
County Surveyor



RECEIVED

NOV 6 1950

REFERRED TO MAP

counter 3700p