

Sketch #13  
 Starr County  
 Compiled in S.R.O. Oct 1<sup>st</sup> 1912  
 2000 Vs = 1 inch

File No. SKETCH FILE 52  
STARR County  
 Office Sk. about 8 miles N. 25° W. of Co. Seat.  
 Filed Oct. 1 19 12  
 GARRY MAURO, Com'r  
 By Douglas Howard (12-12-1990)

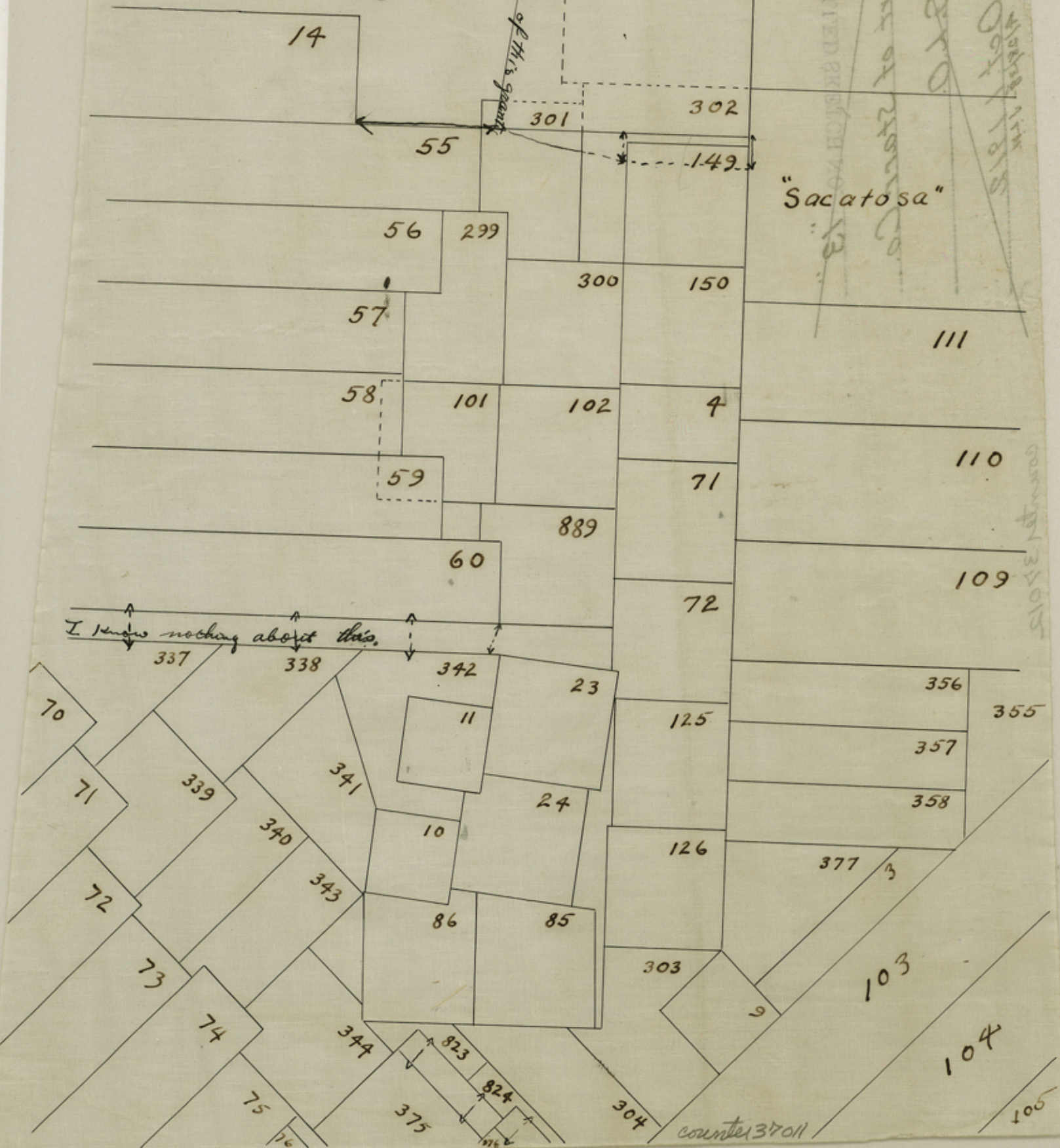
see fl. recently made by me of H's grant

"Pedernal"

"El Javali"

"Sacatosa"

Office Sketch in the W. part of Starr Co.  
 COUNTY ROLLED SKETCH NO. 13  
 BY G. P. O.  
 FILED Oct 1 1912  
 March 1<sup>st</sup>



I know nothing about this.

counter 37011

counter 37011

Road R = 1/4 mi  
 Center in S.W. 1/4 Oct 1911  
 Starr County  
 Sketch #13

By Dan Allen Howard (18-15-1880)  
 GARRY MAURO, Comr.  
 Oct 1 1915  
 Office of Survey & Maps N. E. 2. W. 4. Co. Starr  
 County  
 STARR  
 Sketch File 25  
 No. No.

Range with to sec rd shown otherwise 17 sec  
 "Pedernal"



~~Starr COUNTY ROLLED SKETCH NO. 13  
 Office Sketch in the N.W. Part of Starr Co.  
 SURVEYED BY G.L.O.  
 FILED Oct 4 1912  
 A/28/38-J.H.~~

counter 37012