

Local Agents for Texas and Pacific Railroad and Franco-Texan Land Co.'s Lands in Stephens County.

Also agents for Bayland Orphan Home Lands, situated in Callahan and Shackelford Counties.

We represent over 200,000 Acres of Land in Stephens County.

Special attention given to rendering land and paying taxes for non-residents.

Collections a Specialty.

VEALE & McNEILLY, Lawyers,

General Land and Collecting Agents,

BRECKENRIDGE, TEXAS.

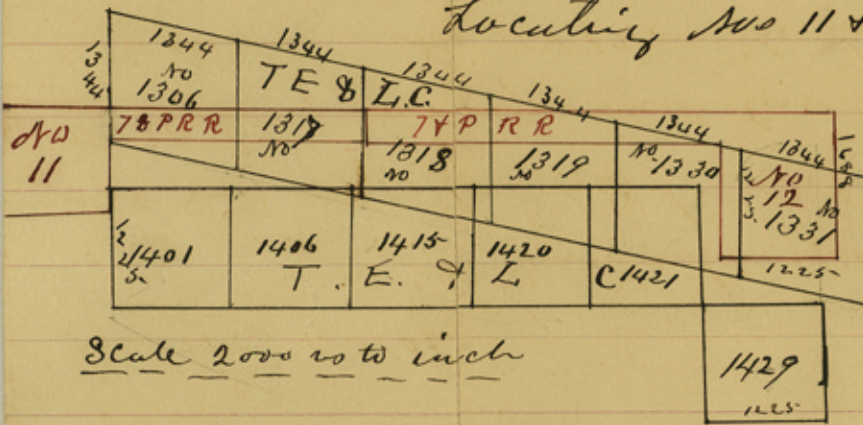
47 51
15 63
16 88

188

Hon. W. C. Walsh

Cour Gen Land office Austin Tex-

Dear Sir: Below find sketch showing the position of the Colony surveys on Cedar Creek in this County and R.R. Surveys No 11 & 12. The Colony surveys Nos 1306, 1317, 1318, 1319, 1330, 1331, surveyed by B.B. Barker, had no allowance for variation made on the East & West lines while those of Leckie Nos 1401, 1406, 1415, 1420, & 1421 had an allowance of 10° 28' E. The R.R. Company in locating No 11 & 12, mistook the S.W. corner



of section No 1306 for the NW of section No 1401. The bearing trees of the S.W. corner of 1306 are standing, and the south

line of Nos 1306, 1317, 1318, 1319, 1330 & 1331 is marked throughout. As also that ^{the N. line} of Nos 1401, 1406, 1415, 1420 & 1421, there is a good deal of dissatisfaction among settlers on account of the condition of section No 12. What shall I do about it.

Yours Truly
R. A. McNeilly C. S. & S. Co Tex

File 10.
Stephens Co

Sketch & Statement.

Filed August 30th 81.

Rhododendron
check