

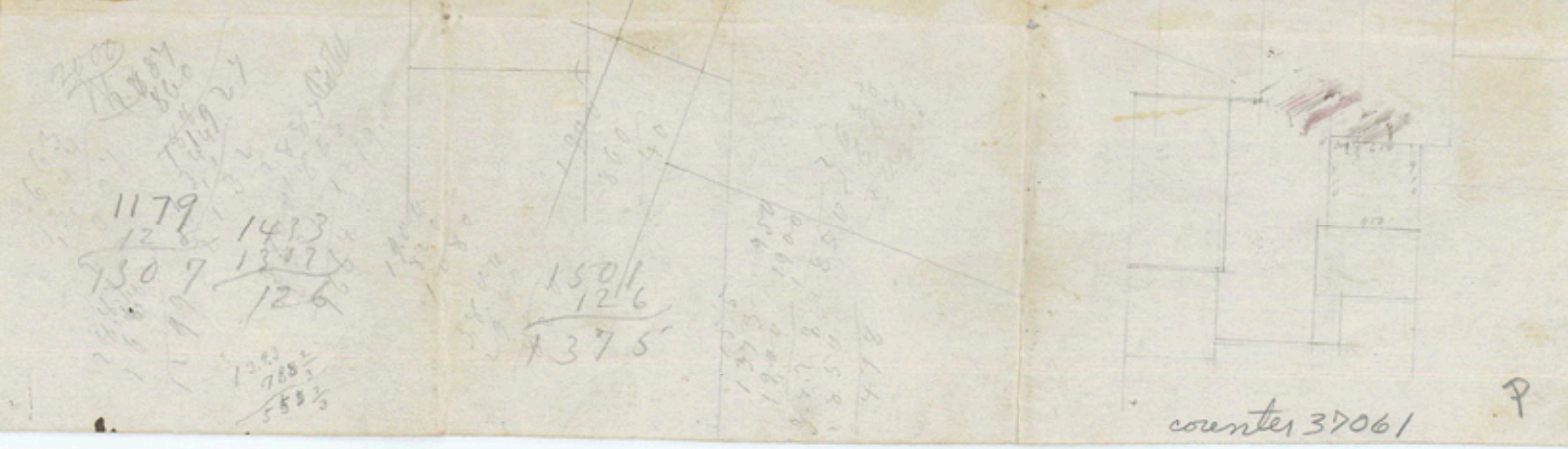
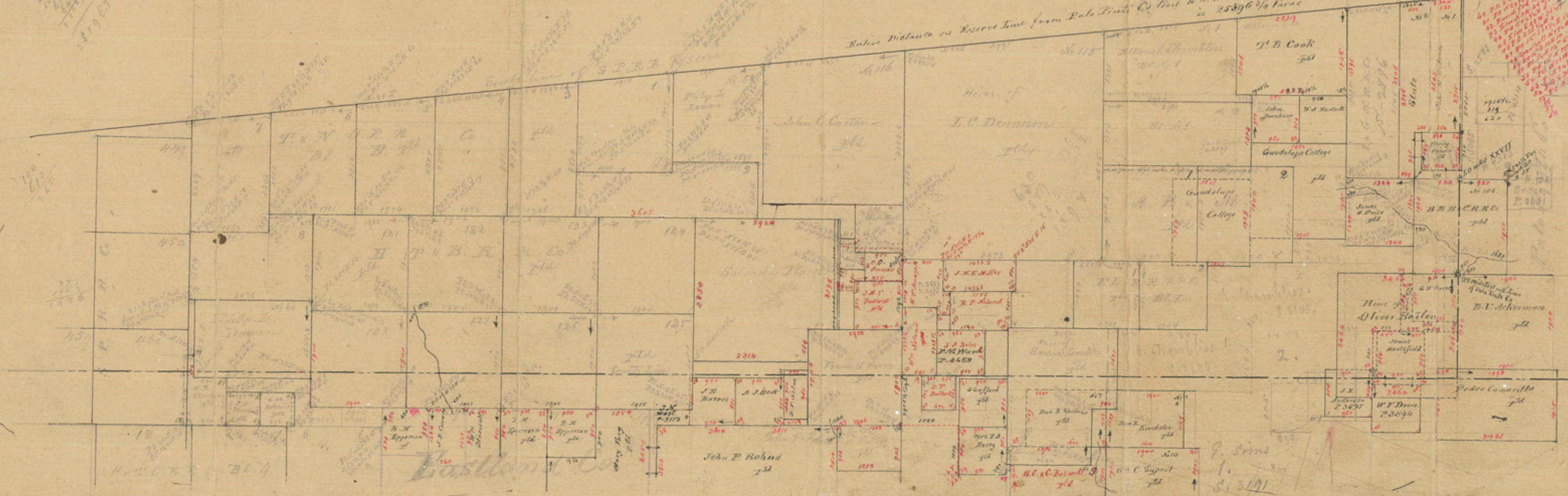
Stephens Co.

Distance of S.H. corner
 Sec. 93. Block 4 from
 P. N. Boundary line is
 3375

1. To C.S. NW 1/4 - 204° 53' 29" W
2. To N.W. corner of Sec. 93 - 70° 4' 21" E
3. To N.W. corner of Sec. 93 - 200° 19' 8" W
4. To N.W. corner of Sec. 93 - 70° 4' 21" E
5. To N.W. corner of Sec. 93 - 200° 19' 8" W
6. To N.W. corner of Sec. 93 - 70° 4' 21" E
7. To N.W. corner of Sec. 93 - 200° 19' 8" W
8. To N.W. corner of Sec. 93 - 70° 4' 21" E
9. To N.W. corner of Sec. 93 - 200° 19' 8" W
10. To N.W. corner of Sec. 93 - 70° 4' 21" E
11. To N.W. corner of Sec. 93 - 200° 19' 8" W
12. To N.W. corner of Sec. 93 - 70° 4' 21" E
13. To N.W. corner of Sec. 93 - 200° 19' 8" W
14. To N.W. corner of Sec. 93 - 70° 4' 21" E
15. To N.W. corner of Sec. 93 - 200° 19' 8" W
16. To N.W. corner of Sec. 93 - 70° 4' 21" E
17. To N.W. corner of Sec. 93 - 200° 19' 8" W
18. To N.W. corner of Sec. 93 - 70° 4' 21" E
19. To N.W. corner of Sec. 93 - 200° 19' 8" W
20. To N.W. corner of Sec. 93 - 70° 4' 21" E
21. To N.W. corner of Sec. 93 - 200° 19' 8" W
22. To N.W. corner of Sec. 93 - 70° 4' 21" E
23. To N.W. corner of Sec. 93 - 200° 19' 8" W
24. To N.W. corner of Sec. 93 - 70° 4' 21" E
25. To N.W. corner of Sec. 93 - 200° 19' 8" W
26. To N.W. corner of Sec. 93 - 70° 4' 21" E
27. To N.W. corner of Sec. 93 - 200° 19' 8" W
28. To N.W. corner of Sec. 93 - 70° 4' 21" E
29. To N.W. corner of Sec. 93 - 200° 19' 8" W
30. To N.W. corner of Sec. 93 - 70° 4' 21" E
31. To N.W. corner of Sec. 93 - 200° 19' 8" W
32. To N.W. corner of Sec. 93 - 70° 4' 21" E
33. To N.W. corner of Sec. 93 - 200° 19' 8" W
34. To N.W. corner of Sec. 93 - 70° 4' 21" E
35. To N.W. corner of Sec. 93 - 200° 19' 8" W
36. To N.W. corner of Sec. 93 - 70° 4' 21" E
37. To N.W. corner of Sec. 93 - 200° 19' 8" W
38. To N.W. corner of Sec. 93 - 70° 4' 21" E
39. To N.W. corner of Sec. 93 - 200° 19' 8" W
40. To N.W. corner of Sec. 93 - 70° 4' 21" E

24/360/16
 16

Balance distance on Reserve Line from Pale Point Co. line to N.W. corner of Sec. 7 P. N. D. R. Co. Block B is 25896 3/4



counter 37061

File 129

Stephens Co

Distance from Palo Pinto
Co. line to NW cor[#] 7, T &
NORRCo., on Reserva-
tion line, = 2559 3/4

P 1



county 37062