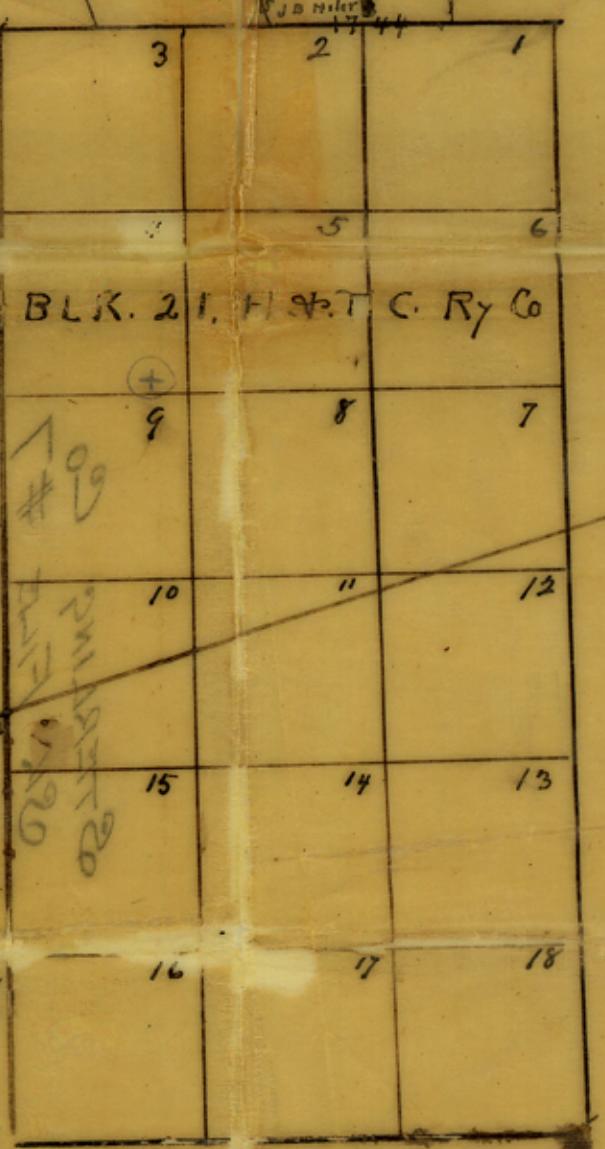
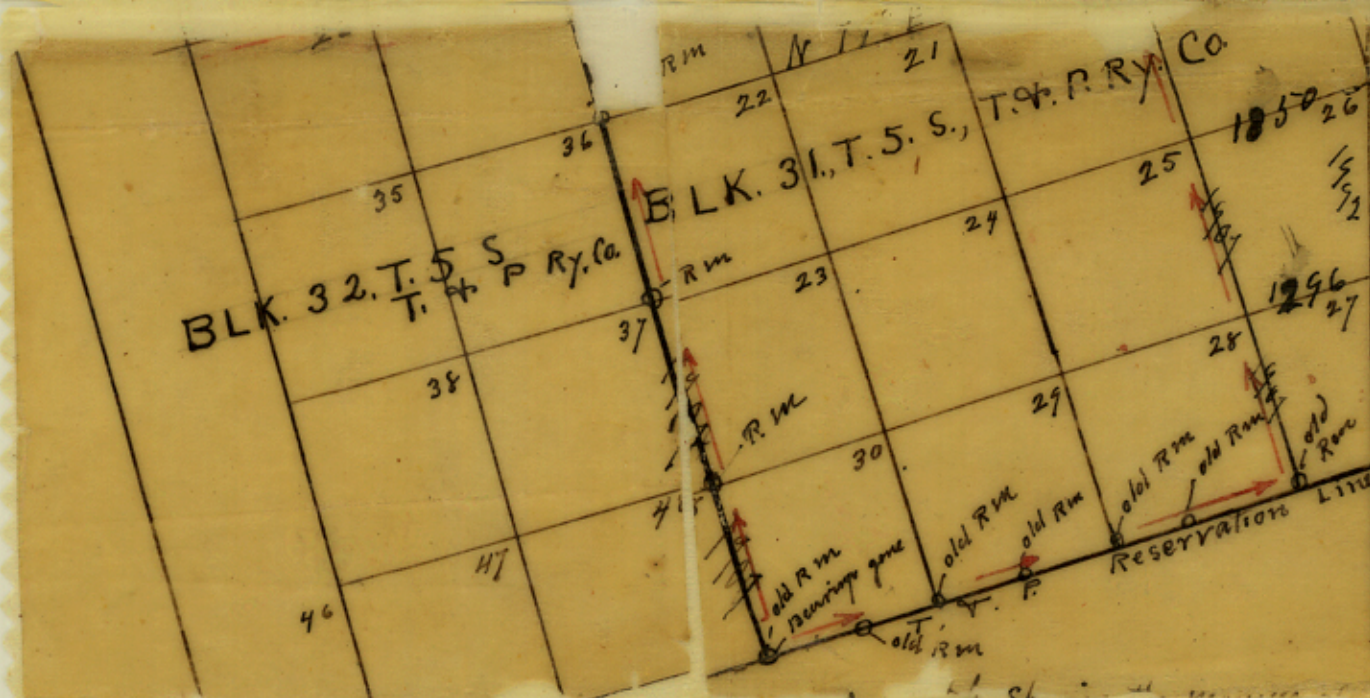
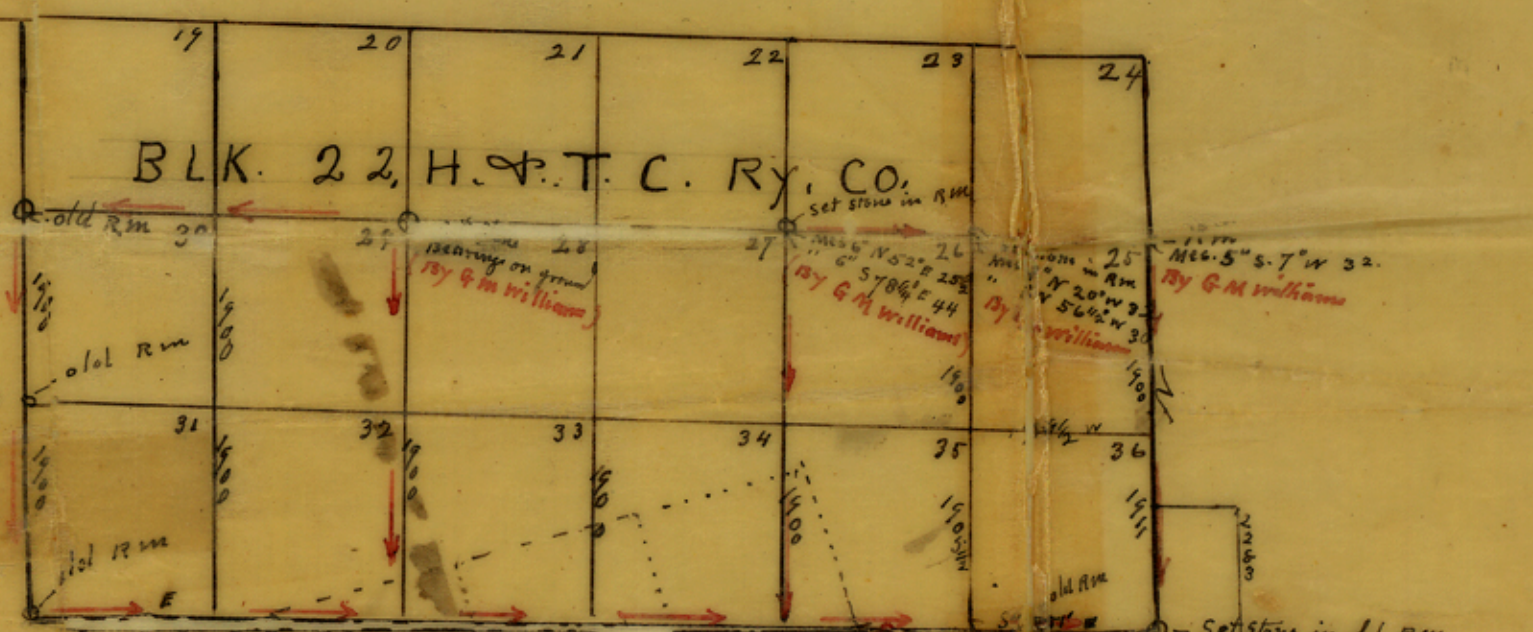


2K File 7



fixing the s. line of of 131K. 22, H. & T. C. Ry  
Sterling Co, Tex., as well as that of 131K 31  
T. & P. Ry Co.  
The Red Arrows shows the  
company and chain by me on the  
ground. W. F. Kellis, Co surveyor  
Sterling Co, Texas Jan 30 1926  
FTI

counter 37121

W. F. Kellis,  
A Licensed State Land Surveyor  
County Surveyor of Sterling County.

Sterling City, Texas. March 15 1926

Hon J. T. Robison, Commr. G. L. O  
Austin Texs.

Dear Sir: Complying with your request of March 9th, requiring additional information ament surveys No. ~~7~~ 7.8 <sup>and</sup> 11, 131K 31, T. 5. S., T. V. P. Ry. Co. in Sterling Co., I beg to explain <sup>and</sup> why the E. corner of sec. 8 is east of the N.E. Cor. of survey 10, I beg to explain that the sketch as well as the map I compiled in 1919, together with the official map of the Land Office appears to be erroneous. The plat furnished by me with the field notes of surveys 7 <sup>and</sup> 8 are correct according to actual surveys on the ground, taking the old 80-mile T. V. P. Reservation line as a base line <sup>and</sup> the south common corner of 131K, 31 <sup>and</sup> 32, T. 5. S. T & P Ry as the place of beginning.

As before stated, only the outer boundaries of these blocks were <sup>originally</sup> surveyed <sup>and</sup> marked. In making a survey of the lands north <sup>and</sup> east of <sup>the lines</sup> 131K 31, I have <sup>constructed</sup> all surveys from the corners on those  
counter 37122

(2)

Sterling City, Texas..... 1926

lines.

Surveys 7, 8, <sup>and</sup> 11 were constructed from this old Reservation Line which was plainly marked, <sup>and</sup> I checked from known corners on the w. line of 131K 31 <sup>and</sup> found a discrepancy of only 4 vrs.

In running the s. lines of surveys 7, 8 <sup>and</sup> 11, I began at the S. E. Cor. of survey 12, Thence N.  $77^{\circ}$  E, at 1901 vrs. pass N. E. Cor. of sec. 18. at a point 679 vrs. S.  $13^{\circ}$  E of the S. 131K. line of 131K 22 H. T. T. C. Ry.; at 3802 vrs. I pass an old Rock ind. the N. E. Cor. of survey 10, at a point 124 vrs. S.  $13^{\circ}$  E. of the S. 131K. line of said 131K. 22.; at 4129 vrs. intersect the s. line of 131K. 22 for E cor of survey 8.

In 1916, Mr. Murray Harris (now deceased), one the original surveyors, of 131K, 31, made a survey of of surveys 7, 8, <sup>and</sup> 11 <sup>and</sup> I herewith submit a copy of his sketch for your inspection, which I would like to have returned for use in this office

F<sub>11</sub><sup>4</sup> You will note that Mr. Harris gave the w  
counter 37123

W. J. Kellis, Licensed State Land Surveyor  
County Surveyor of Sterling County.

3

Sterling City, Texas.

of survey 8, as 156 vrs; that of 7, 722 <sup>and</sup> <sup>192</sup> that  
of 11, 1284; while I gave them 124, 679 <sup>and</sup> that  
of survey 11 1234. I assume that perhaps that Mr.  
Harris took an old drift fence for the S. line of 131K.  
22, which was, in most places too far north.

I think I can explain why ~~the~~ most maps  
(including my own), show the E. Cor. of survey 8, <sup>in</sup> W.  
of the N.E. Cor. of 10. If you construct these surveys  
from the N. Common Cor. of 131K. 31 <sup>and</sup> 32 T. 5. S. <sup>and</sup>  
the S. common of 131K. 31 <sup>and</sup> 32 T. 4 S., the S. lines  
of surveys 7, 8 <sup>and</sup> 11, will be 188 vrs. farther N.  
and 492 vrs. <sup>farther</sup> W. than they really are when  
constructed from the S. Reservation 131K line.  
This construction would blot out survey 8 <sup>and</sup>  
leave only a small area in Survey 7.

I have recently ~~completed~~ an exhaustive survey  
of the outer lines of survey 131K. 32, T. 5, S. <sup>and</sup>  
find that the N. line of said 131K is 492 vrs.  
shorter than the S line <sup>and</sup> and an excess of 188 vrs  
counter 37129

(4)

W. F. Kellis, Licensed State Land Surveyor  
County Surveyor of Sterling County.

First between the <sup>Sterling City, Texas.</sup> N. W. corners of secs. 15<sup>th</sup> 192  
131K 31, T. 5 S.

In surveying this blk. I began at the S. common  
Cor. of 131Ks 31<sup>and</sup> 32 T 5 S. Thence S.  $77^{\circ}$  W 6 miles,  
<sup>13° W</sup>  
Thence N.  $8$  Miles <sup>and</sup> 200 vrs, Thence N.  $77^{\circ}$  ~~W~~ E, 5 Miles  
<sup>and</sup> 1417 vrs. ~~from~~ the S. common cor. of 131Ks 31<sup>and</sup>  
<sup>Thence S.  $13^{\circ}$  E 8 miles <sup>and</sup> 188 vrs.</sup>  
32, T 4 S. I ran N.  $13^{\circ}$  W. from here on line between  
131Ks 31<sup>and</sup> 32, T 4 S 6 miles <sup>and</sup> found most of the  
original corners. I did this to verify their S. common corners.

I conclude there is a jog ~~and~~ existing between  
these blks of 492 vrs. A line of three corners  
are to be found between the S.E. cor. of sec.  
24<sup>and</sup> sec. 1, 131K. 32 T. 5 S.

I submitted a report of this matter including  
a sketch of the work to the Land Office last spring,  
but it was returned for report when a complete  
survey was made. I have recently completed the  
field work <sup>and</sup> found my former conclusions correct.

I have been over this ground often <sup>and</sup> feel that I  
am sure of the correct position of these surveys  
counter 37125

W. J. Kellis, Licensed State Land Surveyor  
County Surveyor of Sterling County.

5

Sterling City, Texas.

192

but if your Department find error in my  
work, or desires further explanation, I will  
gladly give it — if I can —

yours Truly

W. J. Kellis  
Co. sur. Sterling Co.

F<sub>77</sub><sup>1</sup>

counter 37126

RECEIVED  
Sterling City, Texas. Jan. 15..... 1926  
JAN 25 1926

## Explanation

When I surveyed survey No. 12, 131K 31  
T. 5. S. T. T. P. Ry. in 1909 for W. T. Conger,  
H. B. Tarver  
District Surveyor, had previously made North corners  
for this survey, and I conformed to them in  
the northings of survey 12, - making the E line 1200  
vro.

In the spring of 1925, the owners of lands in the  
S. part of 131K. 22, H. T. T. C. Ry. Co. built costly woven  
wire wolf-proof fences around their lands. As there  
was some doubt about the true location of the S. line  
of 131K. 22, they employed me to survey and mark it.

I did this by establishing the S.E. and S.W. corners  
of the Blk. and then produced a straight line from  
corner to corner. In doing this, the line passed  
34 vros. N. of the N.E. corner of survey No. 12.

These costly fences were built on the line I made,  
and the owners are satisfied, so far as I know.

Now, when I surveyed survey No. 11, I  
made the N. W. cor. of it in the S. line  
counter 37127

(2)

Sterling City, Texas..... 1926

of Sec. 33, 131K. 22, H. & T. C. Ry. Co. <sup>and</sup> 34  
vrs. N. 13° W. of the N.E. Cor. of survey 12. I  
did this in the belief that it would pinch  
out a useless vacancy.

The owner, ~~W. F.~~ W. L. Foster, of survey 12,  
was present <sup>in making</sup> and assisting this survey, requested  
that I make corrected field notes of sur. 12, because  
he said he expected to surrender his patent and  
repurchase, - if possible - so as to take in the 34 vrs  
strip in survey 12.

This is why I made the w. line of surve no.  
11, 34 vrs. longer than <sup>the E. line of</sup> survey 12. I may have  
erred in doing this, but in my judgement it is not  
good policy to leave a small vacancy between the  
two secs. when the original intention was to make  
them close

W. F. Kellis

County Surveyor of Sterling County,  
Texas.



W. F. KELLIS  
 LICENSED STATE LAND SURVEYOR AND  
 CO. SURVEYOR OF STERLING COUNTY.

Sterling City, Texas, Jan 30 1926

In the matter of fixing the south line of 1311K. 22,  
 H.V.T.C. Ry. Co. in Sterling Co. Texas.

In 1922, I surveyed sections 25, 26, 35<sup>and</sup> 36 for the  
 owners of said lands. I had previously surveyed 1311K. "T.", T.V.P.  
 Ry. Co. <sup>and</sup> marked their corners. I also had surveyed survey 7, J.B.  
 Hiler <sup>and</sup> had found its north corners. <sup>and</sup> found it had its full measure-  
 -ment, as called for in its original field notes.

I began at the n.w. cor. of sec. 26, 1311K. 22 as made by  
 State Surveyor, G.M. Williams (see sketch herewith). East 1900 vrs. to N.E.  
 Cor. of 26. <sup>and</sup> found Cor. made by Williams. At 3806 vrs. found  
 N.E. Cor. <sup>of sec 25</sup> as made by Williams in w. line of sec. 7. 1311K. T., T.V.P. Ry Co  
 Found all bearings made by Williams.

Thence south with the marked lines of 1311K. "T." at 1900 vrs. I made  
 S.E. Cor. of sec 25 in w. line of <sup>sec 18</sup> 1311K. T. At 3800 vrs. I ran 26 vrs. w <sup>and</sup>  
 11 vrs. n. of an old rock mound for north re-entrant cor. of survey no. 7.  
 J.B. Hiler. I made the S.E. cor. of sec. 36, 26 vrs. E. <sup>and</sup> 11 vrs. S. so as to  
 close with survey no. 7. This made the E. line of sec. 36 1911 vrs.  
 long. <sup>and</sup> S. line 1913 vrs. long, its N. line 1909 1/2 vrs. <sup>and</sup> w. line 1905 1/2 long.

Thence ~~west~~ N. 89° 51' W passing old rock ind. southern n.w. cor. of survey  
 no. 7 J.B. Hiler, at 1913 vrs. made s.w. cor. of sec. 36, at 3826 vrs. made  
 s.w. cor sec. 35, 1311K. 22. <sup>and</sup> west to s.w. cor. of sec. 34. which  
 I marked. The red arrows in sketch show the lines compared  
<sup>and</sup> chained  
 counter 37129

W. F. KELLIS  
 LICENSED STATE LAND SURVEYOR AND  
 CO. SURVEYOR OF STERLING COUNTY.

(2)

Sterling City, Texas,

192

In the spring of 1925, at the instance of the owners, I began at the N.W. Cor. of sec. 28. Made by G.M. Williams - found the set stones <sup>and</sup> tree bearings as described by the records. West at 3802 vrs. I found old rock md. for N.W. Cor. of sec. 30, 131K 22. (by Williams)

Thence south 3803 vrs. an old rock md., the long reputed Cor. of 131K. 22 <sup>and</sup> S.W. Cor. of sec. 31, 131K 22.

Thence East to the S.W. Cor. of sec. 34 which I made in 1922. This completed the S. line of 131K. 22. I marked all the S. corners of the sections <sup>and</sup> since they owners, have <sup>made</sup> adjusted their improvements to this line.

In making this survey, I conformed to the field notes as made by Mr. Williams, with the exceptions that I made the E. block line 11 vrs. longer than W. line <sup>and</sup> the S. line 26 vrs. longer than the N. line. I did this to "pinch" out the little strip that would lie between sec. 36 <sup>and</sup> survey 7.

Heretofore the S. line of 131K. 22 was an "unmarked prairie line" tho it had been approximated from connections from the T. T. P. Reservation Line on the south of 131K. 31. T. T. P.

There is nothing in this office <sup>to show</sup> that show that Mr. Williams ever made any connections through 131K. 31, <sup>southward</sup> to some original or recognized corner, but the red

W. F. KELLIS  
 LICENSED STATE LAND SURVEYOR AND  
 CO. SURVEYOR OF STERLING COUNTY.

(3)

Sterling City, Texas, 192

Some of  
 Arrows show the connections I have heretofore made in  
 resurveying most of 131K. 31. While the <sup>bearings of the</sup> south common cor of  
 131Ks. 31 <sup>and</sup> 32 T.T.P. are now gone, yet, 20 years ago, they were  
 on the ground. I have always considered this a reliable land  
 mark <sup>and</sup> have based all my surveys in 131K, 31, from this  
 corner. It will be seen by the arrows, <sup>in the sketch</sup> that in resurveying the  
 North border surveys of 131K. 31 that I began at this corner, ran  
 N 77° E. 3 miles, then N. 13° W. 4 miles to S.E. Cor of ~~sec~~ 12,  
 In checking, I began at this cor. ran N. 13° W 4 miles to  
 the N.W. cor. of sec. 15 — thence N 77° E. 2 miles to S.W. cor.  
 of sur. 12, I found error of only 4 vrs.

As to Variation, the original surveyors gave it <sup>as 11° 42' E</sup> in making  
 a survey of 131K. 31. but today, the magnetic declension fits these  
 lines at a setoff of 13° E. Then, again, at certain places in this  
 vicinity there appear to be "isogonic loops" where the needle deflects from one  
 to two degrees, <sup>and</sup> the surveyor not acquainted with this fact, <sup>may</sup> make serious  
 errors. When G.M. Williams ~~sur~~ resurveyed 131K. 22., he gave the  
 variation ~~at~~ (in 1905) 8° 45' E. Today, 9° 15' E. will fit his lines — a change  
 of 030' E.

However, if the surveyor will run transit lines <sup>and</sup> tie up to known  
 corners, there will be little reason for effecting the position of these blocks.

Respectfully submitted

W. F. Kellis

counter 37131

Co. sur. Sterling Co

WFKellis <sup>Sketch of</sup> ~~file~~ - (-)  
 Sketch & Explanation  
 filed March 18-1926  
 J. J. Robinson, Com.  
 H. F. McDonald, Clerk

Sterling Co

Sterling Co

Robert [unclear]

H. F. Kellis

Fr 13

*[Faint, mostly illegible handwritten text, likely a survey description or map notes.]*

counter 37132

COMMISSIONER OF STERLING COUNTY,  
 LICENSED STATE LAND SURVEYOR AND  
 W. F. KELLIS

Sterling County, Texas

Sterling City, Texas