

J. J. GOODFELLOW
CONSULTING SURVEYOR AND
LICENSED STATE SURVEYOR

RECEIVED

199

SEP 26 1936

SAN ANGELO, TEXAS, ~~SEP 24~~ ^{SEP 27} 1936

Hon J. H. Walker
Com. Gril Land Office
Austin Texas

{ Special Statement regarding Survey made to correct
Field notes of Sections 22-25-38 and 44 Block 7 }
H & T. C. Ry. Co. in Sterling County Texas.

Dear Sir - Accompanying this statement, you will find corrected field notes of surveys 22, 28, 38 and 44 Block 7 H & T. C. Ry. Co., in Sterling and Tom Green Counties.

I was governed, in my survey, by corners placed on the ground by Stephen Turner in 1884, when he made a resurvey of this Block 7 together with other surrounding H & T. C. Ry. Co. blocks.

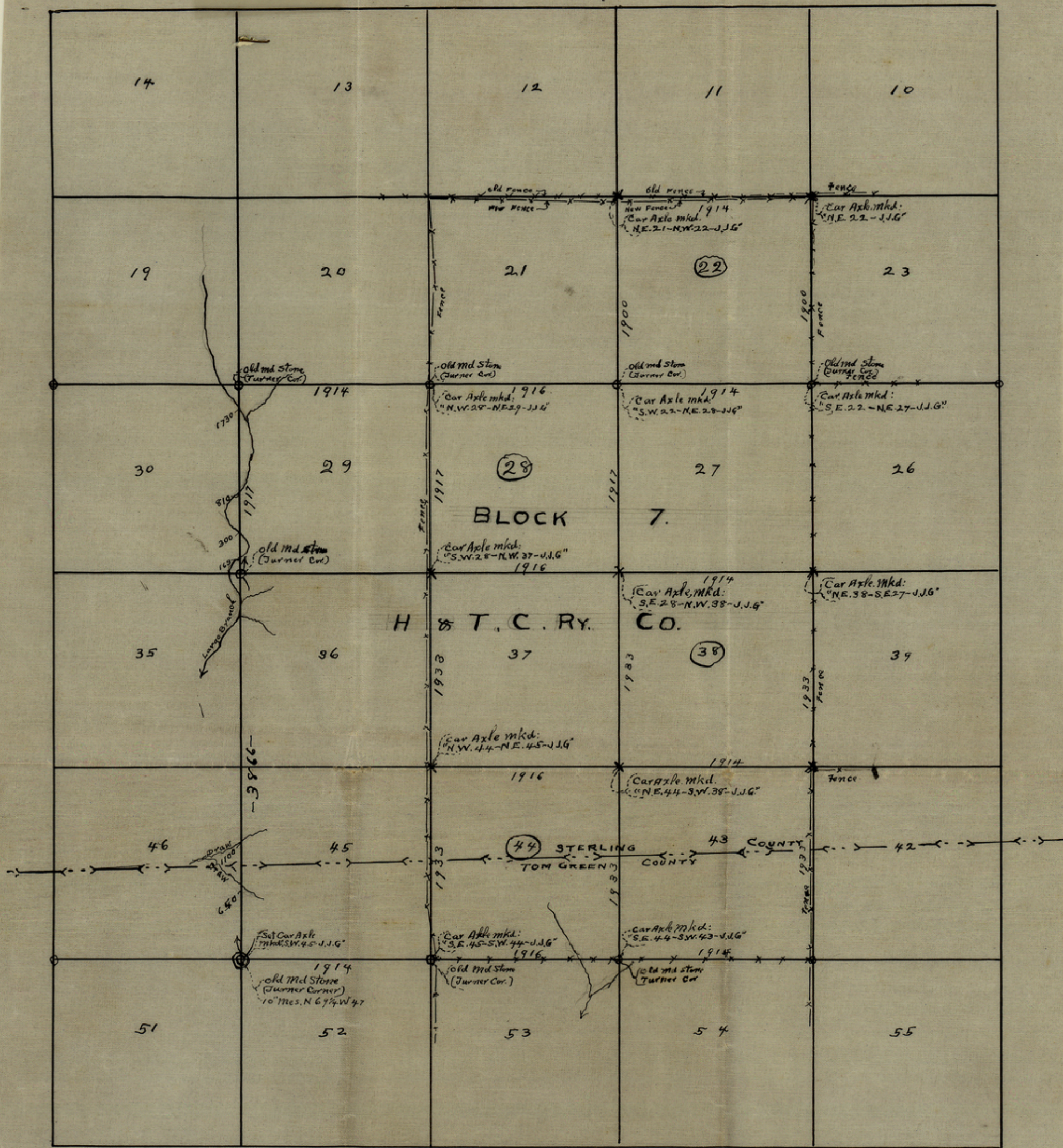
A certified copy of a map, of the survey made by Stephen Turner, and signed by H. W. Stoneham, was filed in your office on Dec 4th 1912 -

I compared the copy by Stoneham, with the one I received from the H & T. C. Ry. Co., and I found no material difference in them -

You will observe on the map that Turner ran lines through this Block 7, east and west at intervals of 3 miles, - I found the line through this block, as shown on map, running E & W, to be parallel to each other - and the line of corners made by said Turner from N.W. Cor. 29 to S.W. Cor. 45, I found the one at N.W. and S.W. corners of 29 - with a distance of 1947⁺ vs between them, I gave this tier of surveys running east the same excess (17w) that I found on uline 29 - I found no corner for N.W. 45, but found the S.W. corner of of this survey (45) as made by Turner with the bearings shown on his map - The distance between the S.W. Cor. 29 & S.W. Cor. 45, is 3866 vs, I divided this excess of 66 w between the two tiers of survey, running east - thus making or giving each survey 1933 vs N & S, in this matter - I gave the E & W distances in this survey, in keeping with the distances found between the Turner corners as will be seen on map.

Survey made Sep 9 to 11th 1936 - Given under my hand and seal of office.
This the 24th day of Sep 1936

J. J. Goodfellow Licensed Land Surveyor
San Angelo, Texas.



STATE OF TEXAS } D. J. J. Goodfellow, a licensed Land Surveyor of Texas,
 County of Tom Green } do hereby certify that the foregoing map was compiled from
 an actual Survey upon the ground, of a portion of Block 7 - H & T. C. Ry Co, in Sterling County
 Texas - Survey made from corners made by Stephen Turner, Surveyor for the H & T. C.
 Ry Co. in 1884 - Corners marked thus ⊙, on the map, represent corners made by said
 Turner, - Corners marked thus ⊙ represent corners with bearings made by said Turner,
 Corners marked thus "X" were made by me, and marked with Car Axles, with markings
 as shown on map - Survey made on ground Sep. 9 to 11th 1936.
 Given under my hand and seal of office, this the 19th day of Sep. 1936

D. J. J. Goodfellow,
 Licensed Land Surveyor,
 San Angelo Texas.

Scale: 1" = 1000 vrs
 Var 10.136.

ALL INFORMATION CONTAINED
 HEREIN IS UNCLASSIFIED
 DATE 04-11-2011 BY 60322/UC/BAW/STP

Filed for Record in my office Sep 24-1936
 Certified copy of above map recorded in Vol. W.
 Page 286 - Surveyors records of Tom Green County
 A. Simpson
 County Surveyor, of Tom Green County.

Filed for Record in my office Sep 24-1936
 Recorded in the Surveyor Records of Sterling County Sep 24-1936
 on Vol 2 - Page 252

W. T. Keller
 Licensed Land Surveyor,
 Sterling City Texas

counter 37155

en!

Sketch File No 17.
Part of Blk. 7.

H. & T. C. Ry. Co.
by J. J. Goodfellow,
filed - Sept. 26-1936.
J. H. Walker, Capt. -
file clerk.

STERLING
CO.

APR 19, 1936.
STATE: 12-1000 AM

Consists of 200 acres of land owned by the
State of Texas, and is located in the
Block 7, Sterling County, Texas.
The land is bounded on the north by the
Sterling County line, on the east by the
Sterling County line, on the south by the
Sterling County line, and on the west by the
Sterling County line.

APPROVED AND FORWARDED:
J. J. Goodfellow
FILED FOR RECORD IN THE OFFICE OF THE
COUNTY CLERK, STERLING COUNTY, TEXAS,
ON APRIL 19, 1936.

counter 37156

