

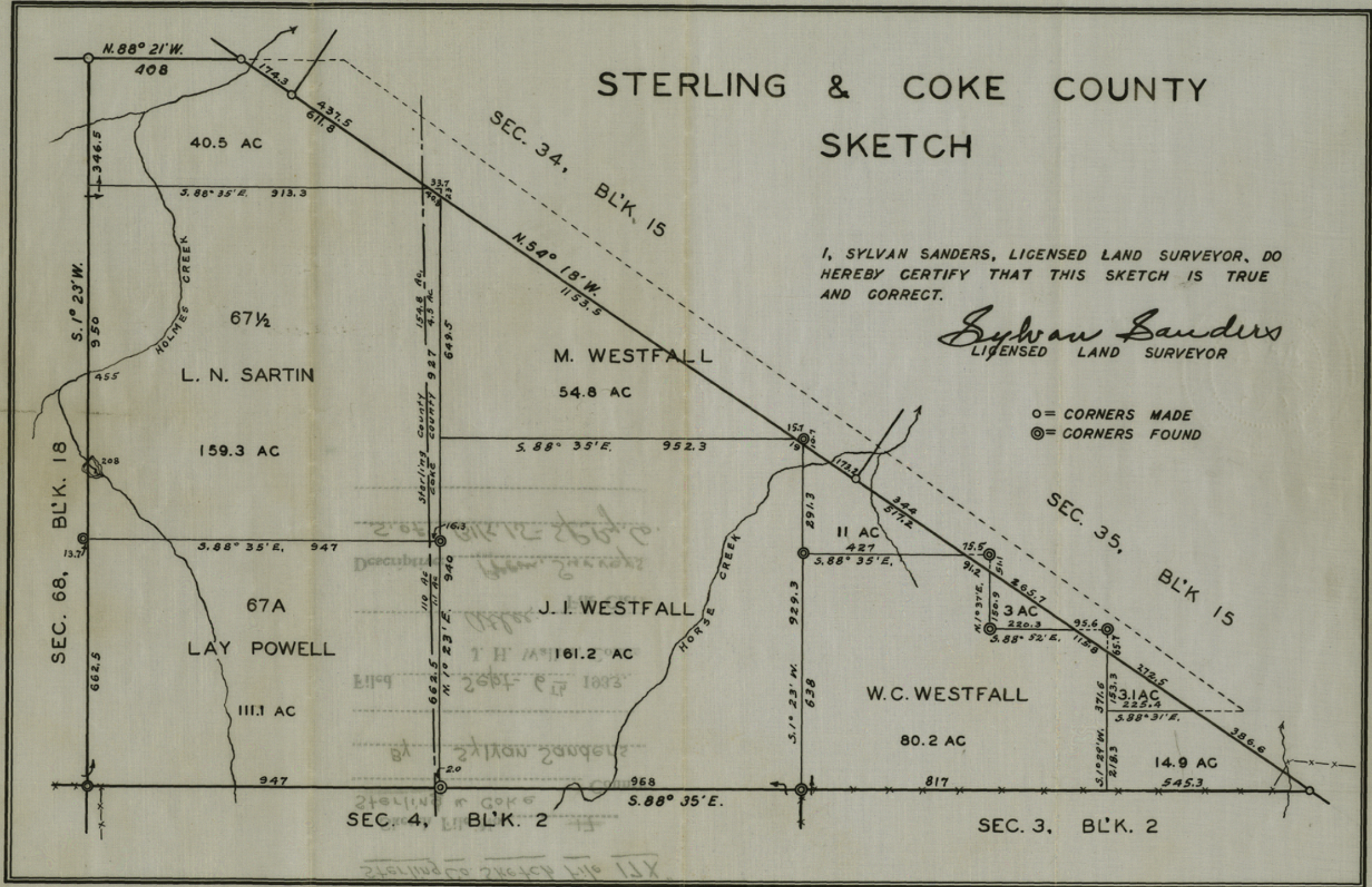
205

STERLING & COKE COUNTY SKETCH

I, SYLVAN SANDERS, LICENSED LAND SURVEYOR, DO
HEREBY CERTIFY THAT THIS SKETCH IS TRUE
AND CORRECT.

Sylvan Sanders
LICENSED LAND SURVEYOR

○ = CORNERS MADE
⊙ = CORNERS FOUND

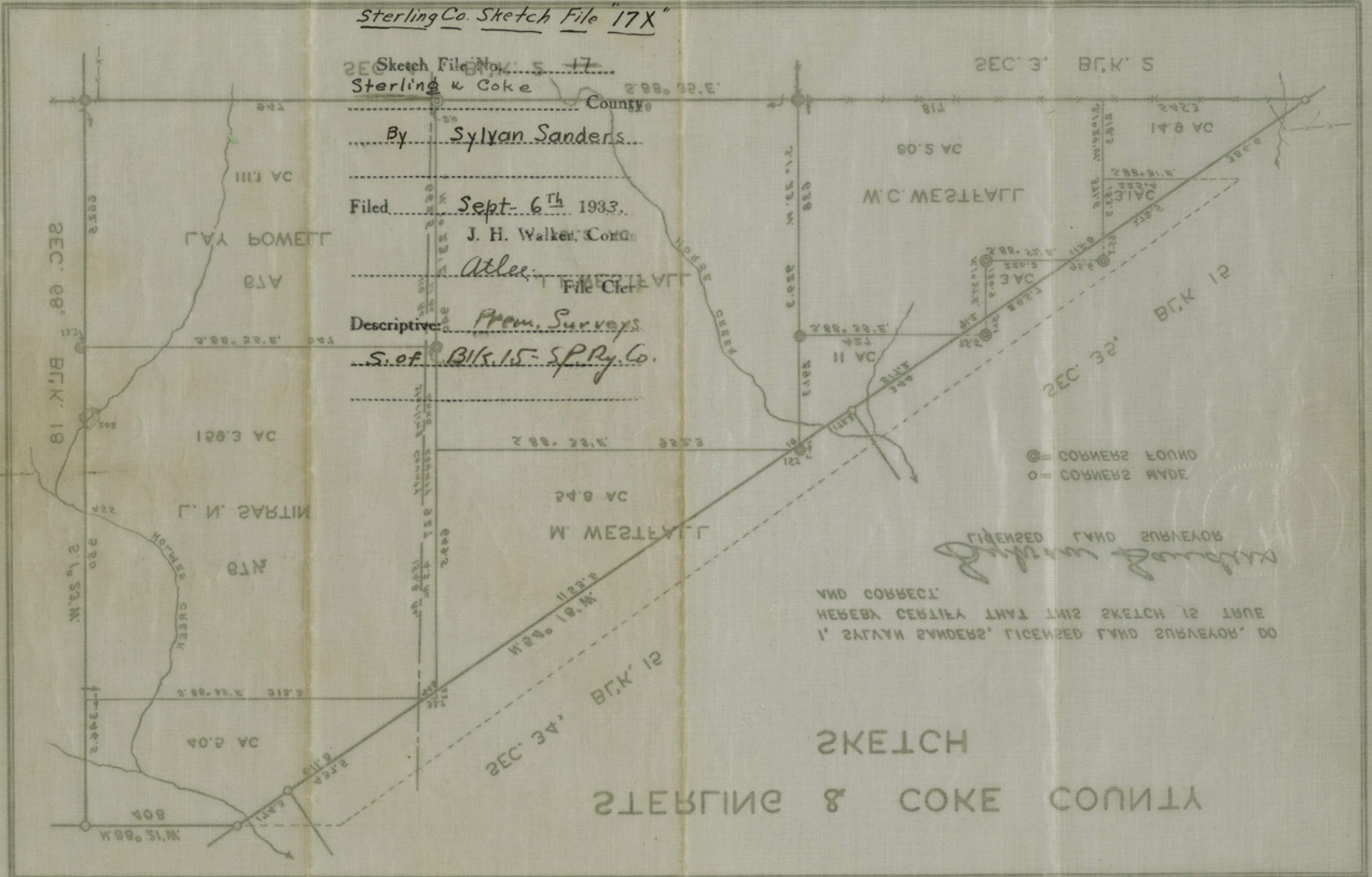


counter 37165

counter 37166

Sterling Co. Sketch File "17X"

Sketch File No. 17
 Sterling & Coke
 County
 By Sylvan Sanders
 Filed Sept-6th 1933.
J. H. Walker, Comm.
Atlee, File Clerk
 Descriptive: Prem. Surveys
S. of Blk. 15 - S.P.Ry. Co.



LICENSED LAND SURVEYOR
Sylvan Sanders

AND CORRECT:
 HEREBY CERTIFY THAT THIS SKETCH IS TRUE
 I, SYLVAN SANDERS, LICENSED LAND SURVEYOR, DO

SKETCH

STERLING & COKE COUNTY

counter 37166