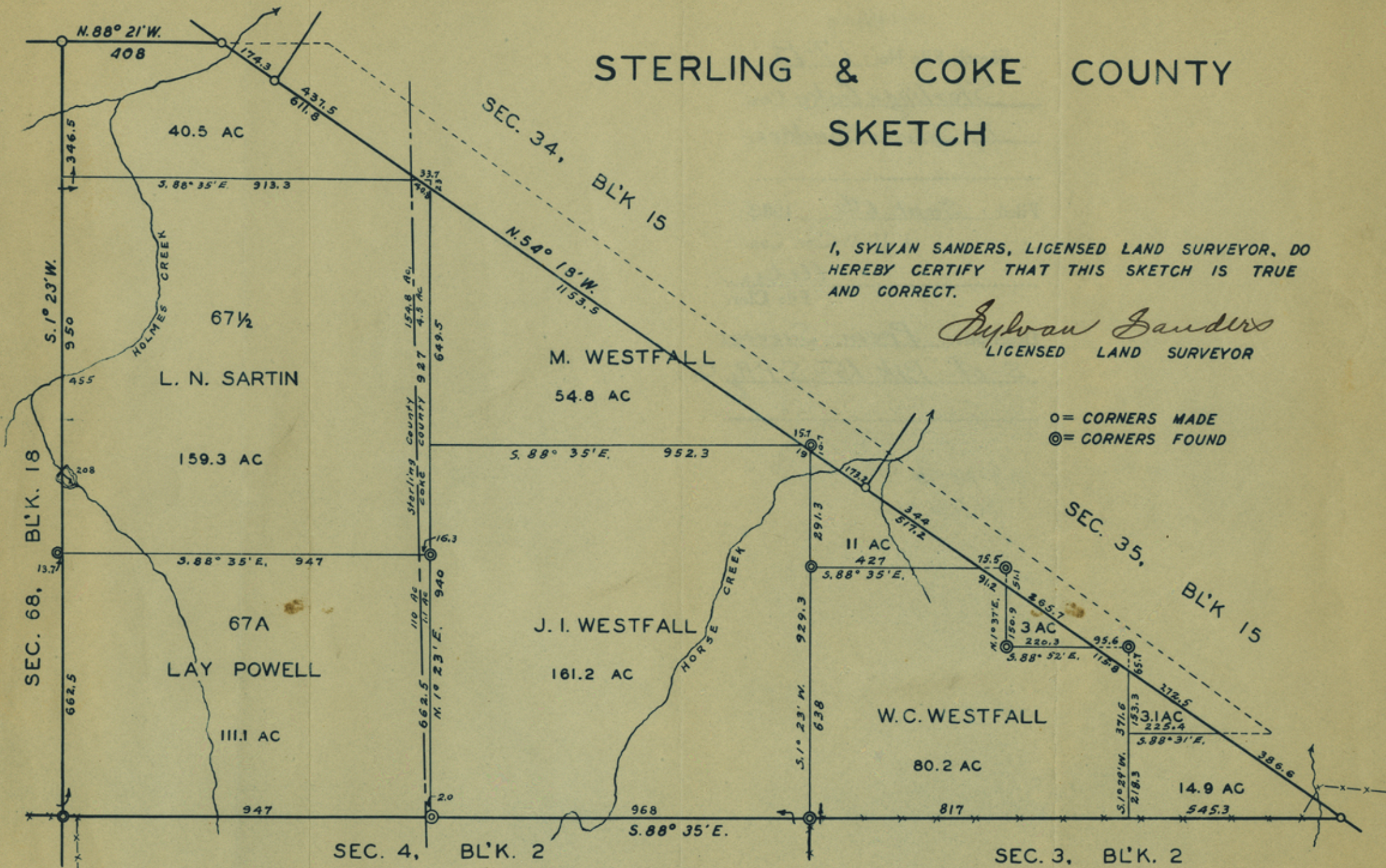


STERLING & COKE COUNTY SKETCH

I, SYLVAN SANDERS, LICENSED LAND SURVEYOR, DO
HEREBY CERTIFY THAT THIS SKETCH IS TRUE
AND CORRECT.

Sylvan Sanders
LICENSED LAND SURVEYOR

○ = CORNERS MADE
⊙ = CORNERS FOUND



sterling

Sketch File No. 17-B.

Sterling & Coke Cos.

By Sylvan Sanders.

Filed Sept. 6th 1933.

J. H. Walker, Comm

Atty.

File Clerk

Descriptive: Prem-Surveys

S-of Bk. 15-S.P.Ry. Co.

Copy of Sterling Co
sk file 17x

counter 37168

