

D-293

EAST HALF OF H. & T. C. R. R. CO. SURVEY NO. 336 BLOCK NO. D STONEWALL COUNTY, TEXAS

708.72 VRS. S89°15'E
OF NW COR. NO. 336

969.0 VRS. S89°15'E
OF NW COR. NO. 336

332 AC.
PATENTED TRACT

PATENTED

S89°15'E

335 314

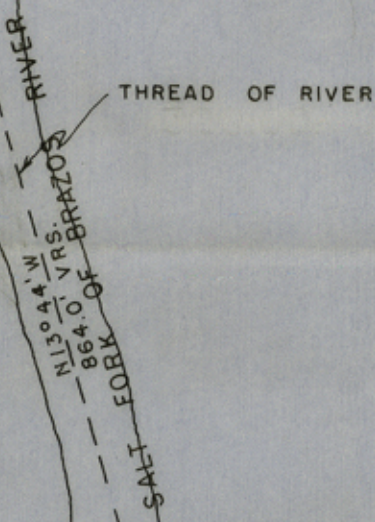
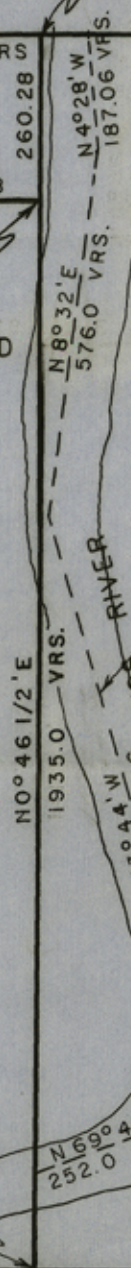
969 VRS. 336 313

Extreme North NE
Cor. of 320 AC.
PATENTED TRACT



Extreme East NE Cor.
of 320 AC. PATENTED
TRACT

332.086 TOTAL AC. IN EAST 1/2
- 12.086 AC. IN THREAD OF RIVER
320.000 NET ACRES



1935 VRS.
S0°47' W
PATENTED

Handwritten notes:
ES
1/2 of 320 AC. 336-Block D
Nov. 3-3-1976
Talmadge E. Dean
Surveyor

SE Cor. 320
AC. PATENTED
TRACT

968.72 VRS.

N89°15'W

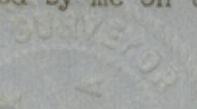
337 312

PATENTED

160 AC.
PATENTED TRACT

SCALE 1" = 300 VRS.

I, Talmadge E. Dean, a Licensed State Land Surveyor of Texas do hereby certify that this is a true and correct plat of a survey completed by me on the ground this 4th. day of November 1976.



Talmadge E. Dean
Talmadge E. Dean
Licensed State Land Surveyor
of Texas.

DEAN SURVEYING
1045 12TH ST. BOX 686 ANSON, TEXAS 79501
PHONE 915-823-3372

counter 37306

