

State of Texas  
Connecting line C County of Sutton

J. E. C. Saunders County Surveyor of  
Sutton County Texas do hereby Certify that  
I ran a connecting line from the S.W. Corner  
Survey No 22 G.W. T & P. R.R. Co Block A to the  
S.W. Corner Survey No 89 I.W. U. & G. R.R. Co Block  
9 of which the following are the field notes

Beginning at an original stone end at the  
S.W. corner of Survey No 22 G.W. T & P. R.R. Co Blk  
A from which a 20 8 in chrs in dia brs § 50 W 25000  
a do 8 in dia brs U 392 45000

Thence West 199700 to an old stone end on  
west bank of Eps creek, the S.W. corner Survey  
No 23 this block from which a 20 5 inches in  
dia brs § 51 W 12000 a do 7 in dia brs U 64 W 31000

Thence West 190000 to an old rock end on  
east side of hill near west ~~line~~ <sup>line</sup> of ~~pasture~~  
~~prairie~~ from which a clump of cedar 3 to 4 <sup>in</sup> dia  
brs U 21 3/4 E 7 1/2 000 S.W. corner Survey No 24

Thence West 190000 to a stone end on east  
side of hill and on west bank of small  
ravine for S.W. corner Survey No 16 I.W. U. & G.  
R.R. Co Block 5

Thence West 190000 to a old stone end  
in small flat on top of divide from which  
a 20 ~~cut~~ 10 in dia brs U 75 1/2 E 106 000 the S.W. Cor  
Sur No 21 this block.

Thence West 190000 to a stone end  
for the S.W. corner Sur No 34 Blk 5

Thence West 190000 to a stone end  
for the S.W. corner Survey No 39 Blk 5

Thence West 190000 to a stone end  
for the S.W. corner Survey No 52 Blk 5

Thence West 190000 to a stone end  
for S.W. corner Survey No 57 Blk 5

Thence West 190000 to a stone end for



S.W. Corner Survey No 70 Blk 5 from which a forked  
L<sub>o</sub> 20 in dia subd C brs N 49½ W 90 ers a do 10 in dia  
M<sub>kd</sub> 3 brs N 75½ E 106 ers

Thence West 1900 ers to S.W. Corner Survey No  
87 Blk 9

Thence West 1900 ers to a Stone and the  
S.W. Corner Sur No 88 Blk 9

Thence West - at about 88 ers passed an old  
rock. Md. Marked S.W. 88 at 1900 ers a Stone and  
for the S.W. Corner Survey No 89 Blk 9

Surveyed June 13 + 14 1906 Variation 9° 33' 2"

Ronald Saunders } Chain  
Frank McGoignil } Conies

Bearings Marked S.C. &  $\frac{X}{III}$

I E C Saunders County Surveyor  
Sutton County Texas do hereby Certify that  
the foregoing survey was made by me on the  
ground and that the lines corners & bear-  
ings with the marks natural and artifi-  
ficial are truly described in the foregoing  
plot and field notes and are recorded  
in Book 2 pages Nos 595 + 596 now in my  
office

Given under my hand this 26<sup>th</sup>  
day of April 1906 E C Saunders  
County Surveyor Sutton Co. Tex



State of Texas  
County of Sutton

Connecting line E

I E C Saunders County Surveyor  
Sutton County Texas do hereby certify that  
I ran a line from the S.W. Corner Sur No  
44 + S.W. corner survey No 46 A 74 + S.A.R.R.C  
Blk K from which a Lo 8 in did on  $387^{\circ} 45' 23\frac{1}{2}''$   
a do 6 in did on  $N 39\frac{1}{4}^{\circ} W 38\frac{1}{2}''$  on as established  
by G.H. Williams State Surveyor Sep. 13<sup>th</sup> 1889

Thence South 7600 on to the <sup>S.W.</sup> corner  
survey 89 Blk 9 T.W. U.G.R.R. Co said corner  
being near an old stone mound marked  
S.W. 89 & accepted same as the established  
S.W. corner survey No 89 Blk 9  
surveyed July 11 + 12<sup>th</sup> 1904  
Bearings marked  $\frac{3}{4}$  Eva Glasscock Chain  
Ronald Saunders) Comed

I E C Saunders County Surveyor  
Sutton County Texas do hereby certify  
that the foregoing survey was made on the ground  
and that the lines corners and boundaries  
with the marks natural and artificial are  
truly described in the plat and field notes  
and are recorded in book 2 page No 599 Now  
in my office

Given under my hand  
this 26<sup>th</sup> day of April 1906

E C Saunders  
County Surveyor Sutton Co. Tex.



Connecting line F State of Texas  
County of Sutton

J. E. C. Saunders County Surveyor  
Sutton County Texas do hereby Certify  
that I ran a connecting line from the  
S.W. Corner Survey No 31 Williamson County  
School Land to the N.E. Corner Survey No 11  
Beatty Seal & Forwood it being the N.W.  
corner Survey No 9 State School Land  
of which the following are the field notes

Beginning at an old stone and  
in small mesquite flat on west bank  
of one of the draws of the Plano river  
from which a mesquite 11 inches in dia  
brs N 51 E 48 or a do 6 in dia brs N 58 1/2 W  
96 or the S.W. Corner Survey No 31 William-  
son County School Land

Thence North at 744 ors passed a  
small rock and on east-bank of branch  
the N.E. Corner Survey No 30 Williamson  
County School Land from which a large  
forked Mesquite brs N 47 E at 1344 ors  
a stone and in valley on west-bank  
of branch for N.W. Corner Survey No 31  
and S.W. Corner Survey No 32 William-  
son County School Land the bearing  
tree called for a 6 inch L. N 1 1/2 W  
396 1/2 ors could not be found

Thence North with west line Sur-  
vey No 32 Williamson County School Land  
1572 ors to an old stone and for S.W.  
Corner Survey No 33 Laura Grantee from  
which a L. 12 inches in dia brs S 35 W 3 E  
or a do 7 inches in dia brs S 62 E 50 ors

Thence North 1344 ors to a stone  
mound N.W. Corner Survey No 34

Thence East 1572 ors to East-



line survey No 12 B. S. & F. 182 on North of its  
S.E. corner

Thence North with East-line  
of Survey 12 & 11 B. S. & F. 2050 on to a stone  
and 60 on South of from South line of  
Block 9 T. W. & N. G. R. R. Co.

Thence North 60 on to a point in  
South line Survey No 89 T. W. N. G. R. R. Co.  
Block 9, 321 on from S.W. corner of Survey  
No 89 as per connecting line @ run from  
S.W. corner Survey No 44 Block K. A. H. & S. A.  
R. R. Co and 231 on corner of same survey  
as established by a line run from S.W.  
corner of Survey No 22 C. W. T. & P. R. R. Co.  
Block A., Surveyed June 14 & 15<sup>th</sup> 1905.  
Variation 9° 33'

Ronald Saunders

Bearing Marked 1/1 Frank McYoungill

I E C Saunders County Surveyor  
Sutton County Texas do hereby Certify  
that the foregoing survey was made  
by me on the ground and that the  
lines corners boundaries with the marks  
natural and artificial are truly des-  
cribed in the plat and field notes  
and are recorded in book 2, pages Nos  
597-598 now in the office

Given under my hand this  
20<sup>th</sup> day of April 1906

E C Saunders

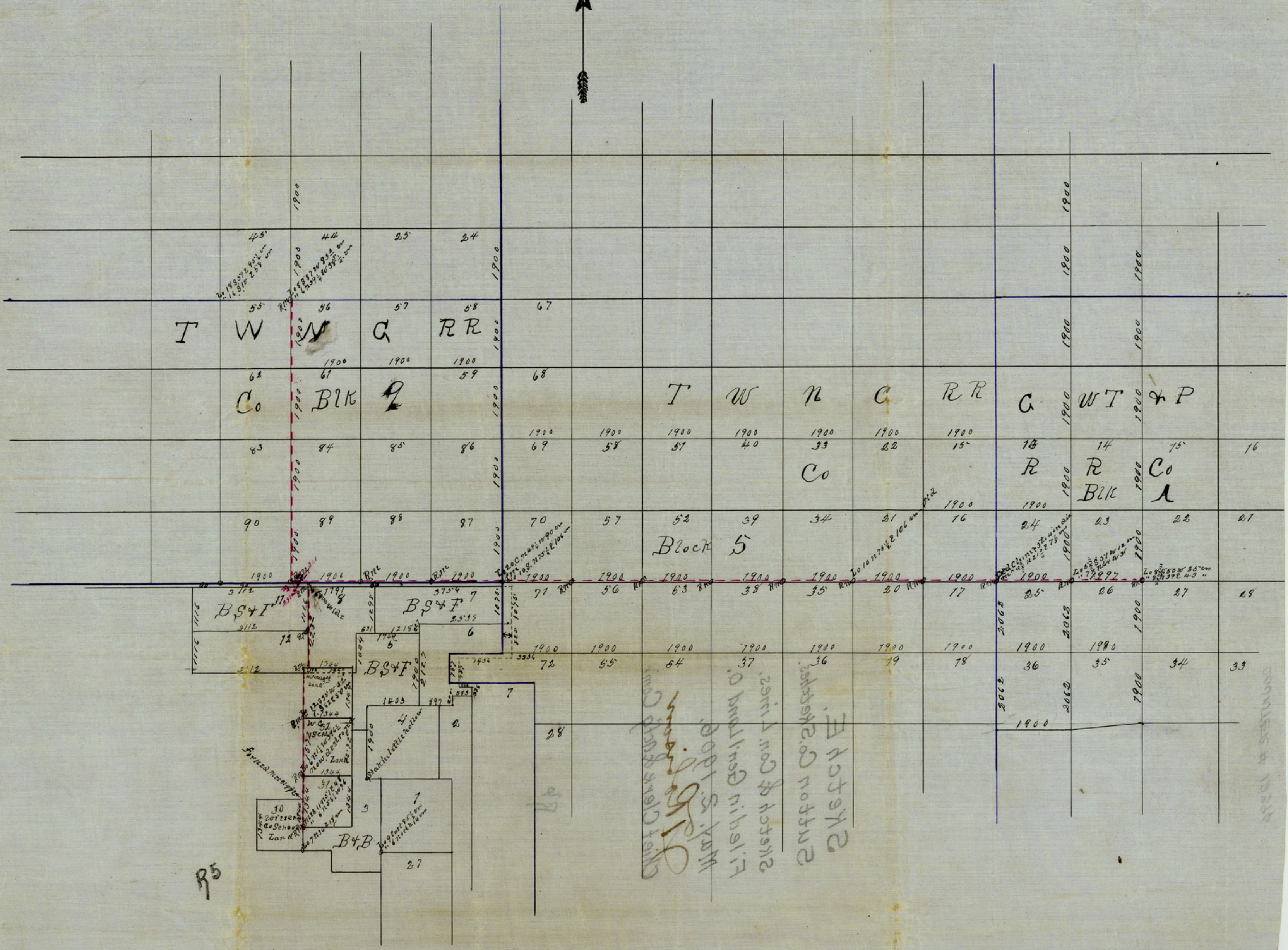
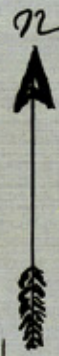
County Surveyor Sutton Co Texas

Sutton Co.

S. E.

B4





R5

CHIEF CLERK  
J. J. [unclear]  
J. J. [unclear]  
J. J. [unclear]  
J. J. [unclear]  
J. J. [unclear]  
J. J. [unclear]

COMMISSIONER # 10338