

Surveys in Blk
9 and in SE Corner
John Robins pasture

1596
RECEIVED

NOV 21 1939

REFERRED TO MAP

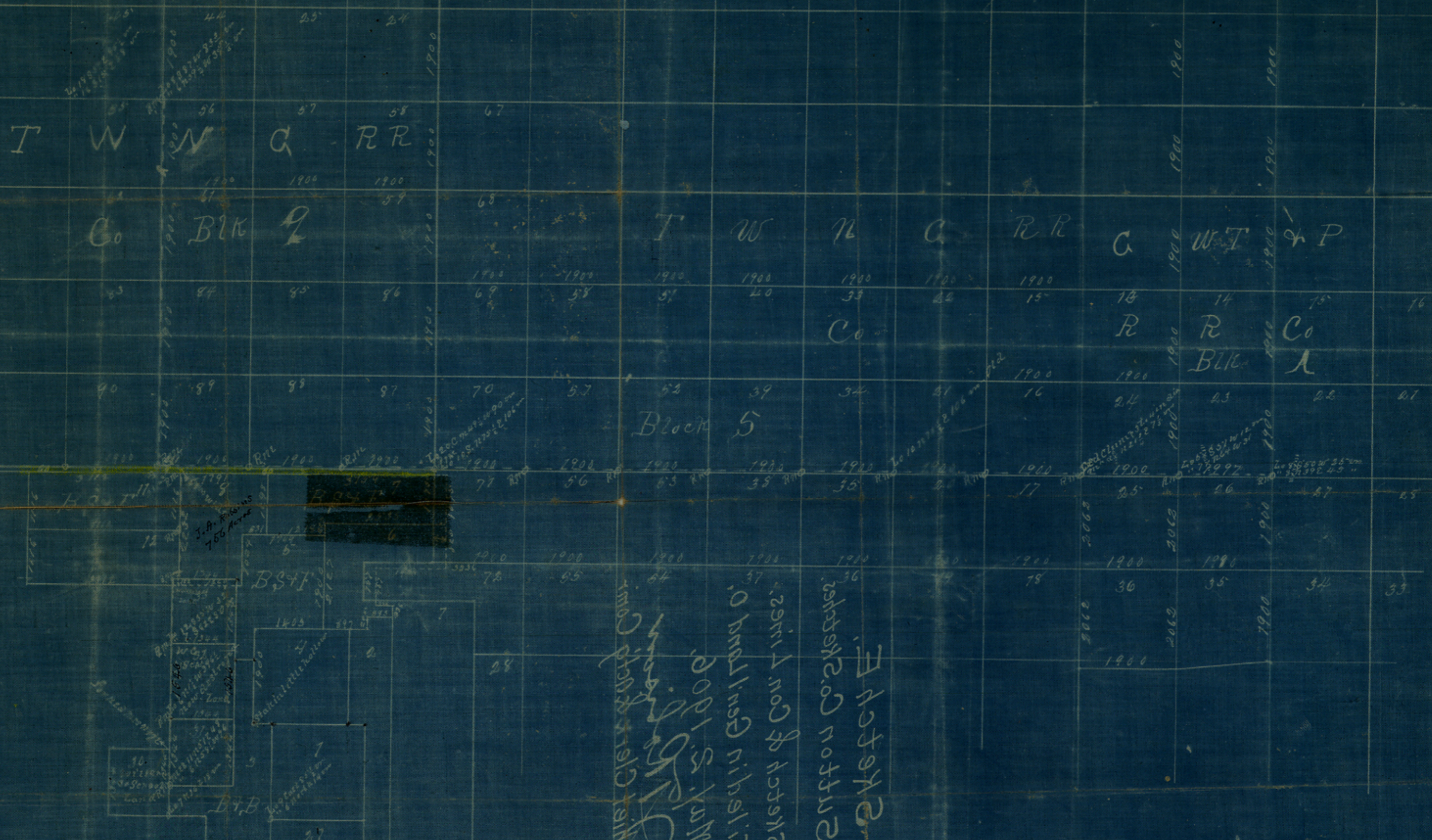
SUTTON
Sketch A.

Question our -

There is a vacancy shown on map
beginning at East
line of Survey T B S & F.
in West line of Sur 71
Blk 5 T W N & R R Co and extending
West to East line of Blk 9 T W N & R R Co.
This strip is about 3000 wds. between Sur 9
B S & F and Sur 87 Blk 9 T W N & R R Co at East
line of Sur 71 T W N & R R Co, and on account of
difference of variation of Blk 9 T W N & R R Co
which was surveyed by G. Edwards 1878 with no
magnetic variation of the needle given. Blk 12 was
surveyed in 1876 by F. E. Edwards with no variation of
the needle given. So I believe that the variation
used in surveying Blk 9 should be the same as
G. M. Williams used in surveying Blk 12, A, B, C, D,
E, F, G, H, I, J, K, L, M, N, O, P, Q, R, S, T, U, V, W, X, Y, Z,
and when you use the variation of Blk 12
in establishing the South line of Blk 9 T W N & R R Co
and survey North line of Blk 9 as surveyed by
W. H. Bonnell in 1881. I have found that these two
lines meet near N.W. Cor Survey 20 Georgetown
R.R. Co Blk A 9, when first traced on the ground. G. L. Sawyer

B'

counter 37389



The above plat correctly represents the surveys in their true relative position as they are actually on the ground and so recognized by this office

Examined
 E. von Rosenberg
 Chief Draftsman

July 30/1912.

B

counter 37390