

Recd May 6/1894

OK

Variation 10° 30' E Meridian of Sonora.

State of Texas,  
County of Sutton.

Connection Line No. A 1.

I, Edgar C. Saunders, County Surveyor of Sutton County, Texas, do hereby certify that on the 7th day of February, 1917, I began a survey from the S E corner of Survey No. 199, Certificate No. 102, HE&WTRR Co., Block A.

Thence South and East to the S W corner of Survey No. 1, Certificate No. 4/1364, GC&SFRR Co., for the purpose of locating the W boundary line said Block A as established on the ground by W. B. Silliman when surveying the entire Block, of which the following are the field notes.

Beginning at a stone mound, cap stone marked SE 199 A, at the S E cor Survey No. 199, HE&WTRR Co., Blk. A, as approved by D. W. Maddox, County Surveyor, Menard County, and filed in General Land Office June 15th, 1900, (see file 24702) whence a Mes 9" in dia mkd X brs N 8 W 113 vrs, a Mes 9" in dia brs N 32½ W 134½ vrs.

Thence S 7' E 3816 vrs to a stone mound, cap stone mkd NW 195 A, at the N W corner of Survey No. 195, Blk. A, whence a Mes 10" in dia brs S 78 ¾ W 101 ¾ vrs.

Thence S 5' W at 1899 vrs, a stone mound, cap stone mkd SW 195 A, at the S W cor Survey No. 195, Blk. A, whence a Mes 7" in dia brs N 37 W 65 vrs, tree mkd X, a Mes stump 8" in dia brs S 77° W 107½ vrs.

Thence South with W line of Survey No. 194 at 1899 vrs, pass an old stone mound and corner of fence, course E at 3798 vrs, pass an old stone mound and S W cor of a field in all, 5698½ vrs to an old stone mound, cap stone marked NW 191 A at the N W corner Survey No. 191, Blk. A, same being N W corner S. I. Nicks woven wire wolf-proof fence, whence a Mes 10" in dia marked X (old mark), brs S 59 ¾ W 131 ¼ vrs.

Thence S 5' E with W line Surveys No. 191, 190, 189, the said Nicks W. P. fence, at 1900 vrs pass a stone mound N W cor 190 at 3798 vrs, an old stone mound against fence, cap stone marked NW 189 A at the N W cor Survey 189, this Blk., whence a Mes 5" in dia mkd X (old mark) brs N 8½ W 24 vrs, at 3797 vrs pass an old stone mound, cap stone marked NW 188 A at the N W corner 188, Blk. A, and junction of a W. P. fence, course E, in all 7598½ vrs to an old stone mound on open divide, cap stone marked NW 187 A, at the N W corner Survey No. 187, Blk. A, evidently a Silliman corner.

Thence S 5 W, passing N W corner of Surveys No. 186 and 185, this Blk., 5708 vrs to an old stone mound against a W. P. fence, cap stone marked SW 185 A, at the S W cor of Survey No. 185, Blk. A, whence another rock mound brs N 8 vrs.

Thence South 1902 vrs to an old stone mound, cap stone mkd SW 184 A, at the S W corner Survey No. 184, Blk. A, HE&WTRR Co., and junction of a W. P. fence, course E, same being NW corner Survey No. 1, GC&SFRR Co., Certificate No. 4/1364.

Thence, continued South with W line Survey No. 1 and a woven wire W. P. fence at 1900 vrs a stone md, cap stone marked SW 1, at the S W corner Survey No. 1, GC&SFRR Co., whence a L O 18" in dia marked X (old) brs N 17 ¾ W 94 vrs.

Thence East with S line said Survey No. 1 and a W. P. fence, 1900 vrs to an old stone mound which I capped with a stone mkd SW 2, at the S W corner Survey No. 2 and S E No. 1, GC&SFRR Co., whence a L O 14" in dia marked X old mark, brs S 20½ E 94 vrs.

Surveyed 7 to 9th February, 1917.

W. L. Bissett § Chain  
L. A. Merriman § Carriers.

Recorded in Book No. 4, pages 84-78, 548

*Edgar C. Saunders*  
County Surveyor  
Sutton Co Texas

I, Edgar C. Saunders, County Surveyor, Sutton County, Texas, do hereby certify that the foregoing described survey was actually made by me on the ground according to law, on the date

hh



and with the chain carriers aforesaid, duly qualified, and that all the corners, lines, boundaries and marks of the same, whether natural or artificial, are truly and correctly described in the foregoing plat and field notes.

Edgar C. Saunders, County Surveyor,  
Sutton County, Texas.

Variation 10° 30' E.

State of Texas,  
County of Sutton.

Connection Line No. A2.

Then on the 18th day of April, 1918, I furthermore certify that I began at the aforesaid S E corner of Survey No. 1 & S W cor 2, GC&SFRRCo., Certificate No. 4/1364, (whence a L O 14" in dia, marked  $\bar{X}$ , old mark, brs S 20 $\frac{1}{4}$  E 94 vrs), and ran thence East with S line Survey No. 2 and a W. P. fence 1900 vrs to an old stone mound, cap stone marked SE 2 at the S E corner of Survey No. 2, GC&SFRRCo., evidently made by John McNicol, County Surveyor, Sutton County, in July, 1893, (see Connection Line No. 5, a copy of which I herewith enclose), whence a L O mkd  $\bar{X}$ , old mark, brs N 38 $\frac{1}{2}$  W 18 $\frac{1}{2}$  vrs.

Thence North with an old marked line 1900 vrs to a large stone mound (old), cap stone marked SE 183 A, at the SE corner Survey No. 183, Blk. A, HE&WTRRCO., also S W corner Survey No. 154 as described by John McNicol in field notes of Connection No. 5, from S E corner, Survey 33, said Block A, herewith enclosed. Surveyed <sup>April</sup> 18th-20th, 1918.

L. A. Merriman  $\dagger$  Chain  
Mont Merriman  $\dagger$  Carriers.

I then on the 23rd of April, 1918, for the purpose of locating the corners of Survey No. 20, EL&RRRRCo., began at the S W corner of Survey No. 93 and N W corner 94, HE&WTRRCO., Block B, whence a L O 12" in dia marked  $\bar{W}$  (old mark) brs S 81 E 52 $\frac{1}{2}$  vrs, a L O 12" in dia mkd  $\bar{S}$  brs N 40 E 53 $\frac{1}{2}$  vrs, said mound being by actual careful measurement on the ground 5700 vrs North of a stone mound, cap stone marked N E 120 C, whence a L O 8" in dia marked  $\bar{S}$  brs S 66 $\frac{1}{4}$  E 41 1/5 vrs, a L O 5" in dia, same mark, brs S 43 $\frac{1}{2}$  E 27 1/5 vrs. See Connecting Line No. G, surveyed Aug. 8 to Sep. 22, 1906, by E. C. Saunders, County Surveyor, Sutton County, filed in General Land Office Oct. 11th, 1906. See (1) Sketch F, Sutton Co., SF 152, for Surveyor's letter and Sketch F2, to which reference is made.

Thence North at 1900 vrs, made a stone mound for S W cor Survey No. 92, this Block, whence another old stone mound made by B. C. Richards when surveying this Block for Tracy & Russell, brs S 32 E 62 vrs at 3800 vrs made a stone mound for S W corner 91, whence an old stone mound brs S 30 E 61 3/4 vrs, at 5700 vrs, made a stone mound for S W cor Survey No. 90, whence an old stone mound, the B. C. Richards corner, for this same Survey, brs S 30 $\frac{1}{2}$  E 61 vrs, in all 3500 vrs, made a stone mound for N W corner Survey No. 89 and N E corner 104, in North boundary line Block B, HE&WTRRCO. and S line Survey No. 19, EL&RRRRCo., Certificate No. 1547, whence an old stone mound brs S 30 $\frac{1}{4}$  E 59 vrs.

Thence West with N boundary line Block B at 1068 vrs, made a stone mound, cap stone marked S E 20 at the S E corner Survey No. 20 and S W cor No. 19, EL&RRRRCo., whence a L O 7" in dia marked  $\bar{X}$ , brs S 36 $\frac{1}{2}$  E 21 $\frac{1}{2}$  vrs, a L O 10" in dia, same mark, brs N 69 $\frac{1}{4}$  E 33 3/4 vrs at 2786 vrs or 1718 vrs W of mound marked SE 20, made a large stone mound, cap stone marked SW 20 at the S W corner Survey No. 20, EL&RRRRCo., at 5983 vrs, pass a point 18 vrs S of an old stone mound made by John McNicol for N W corner Survey No. 120, Block B, HE&WTRRCO., whence a L O 12" brs N 85 $\frac{1}{2}$  E 92 1/3 vrs, a L O 12" brs N 81 $\frac{1}{2}$  E 61 vrs. See Connection Line 7, enclosed, in all 6221 vrs to a point in N line Survey No. 121, Blk. B, HE&WTRRCO., 521 vrs W of its N E corner.

LEGHORN ABSTRACT  
FROM GEO. D. BARNARD & Co.,  
ST. LOUIS, MO.

6221  
521

hh<sup>2</sup>

counter 37462



Thence North 2670 vrs to an old stone mound against  
wolf-proof fence, cap stone marked S E 2, at the S E corner  
Survey No. 2 and S W corner Survey 3, GC&SFryCo., Certificate  
No. 4/1364-4/1365, as described in Connection No. A2.

Surveyed April 23 and 24th, 1918.

Mont Merriman    | Chain  
L. A. Merriman   | Carriers.

I, Edgar C. Saunders, do hereby certify that the fore-  
going described survey was actually made by me on the ground,  
according to law, on the date and with the chain carriers  
aforesaid, duly qualified, and that all the corners, boundaries  
and marks of the same, whether natural or artificial, are truly  
and correctly described in the foregoing plat and field notes,  
and are recorded in Book No. 4, page 387-388 April 30<sup>th</sup> 1918.

Edgar C. Saunders, County  
Surveyor, Sutton County, Texas.

I, Edgar C. Saunders, County Surveyor, Sutton County,  
do hereby certify that I have examined the foregoing plat and  
field notes and find them correct, and that they are recorded  
in my office in Book 4, page .

Given under my hand at Sonora, Texas, this 30 day of  
April, A. D., 1918.

*Edgar C. Saunders*  
County Surveyor, Sutton County, Texas



SK. file

No. 23.

Sketch of Con. lines in N. part of  
Sutton Co. & S. part of  
Schleicher Co by E.C. Saunders

4-30-1918

h  
h

counter 37464



Butler Co. Ind.

Q. 1/2 Sec. 23

23

Bro. H. County

Field notes of a connecting  
line run from the S. W.  
corner of Survey N<sup>o</sup> 538 sur-  
on which Fort Terrett is  
situated and the S. W.  
corner of Survey N<sup>o</sup> 12 in  
name of S. P. R. R. Co. S. W.  
of Fort Terrett.

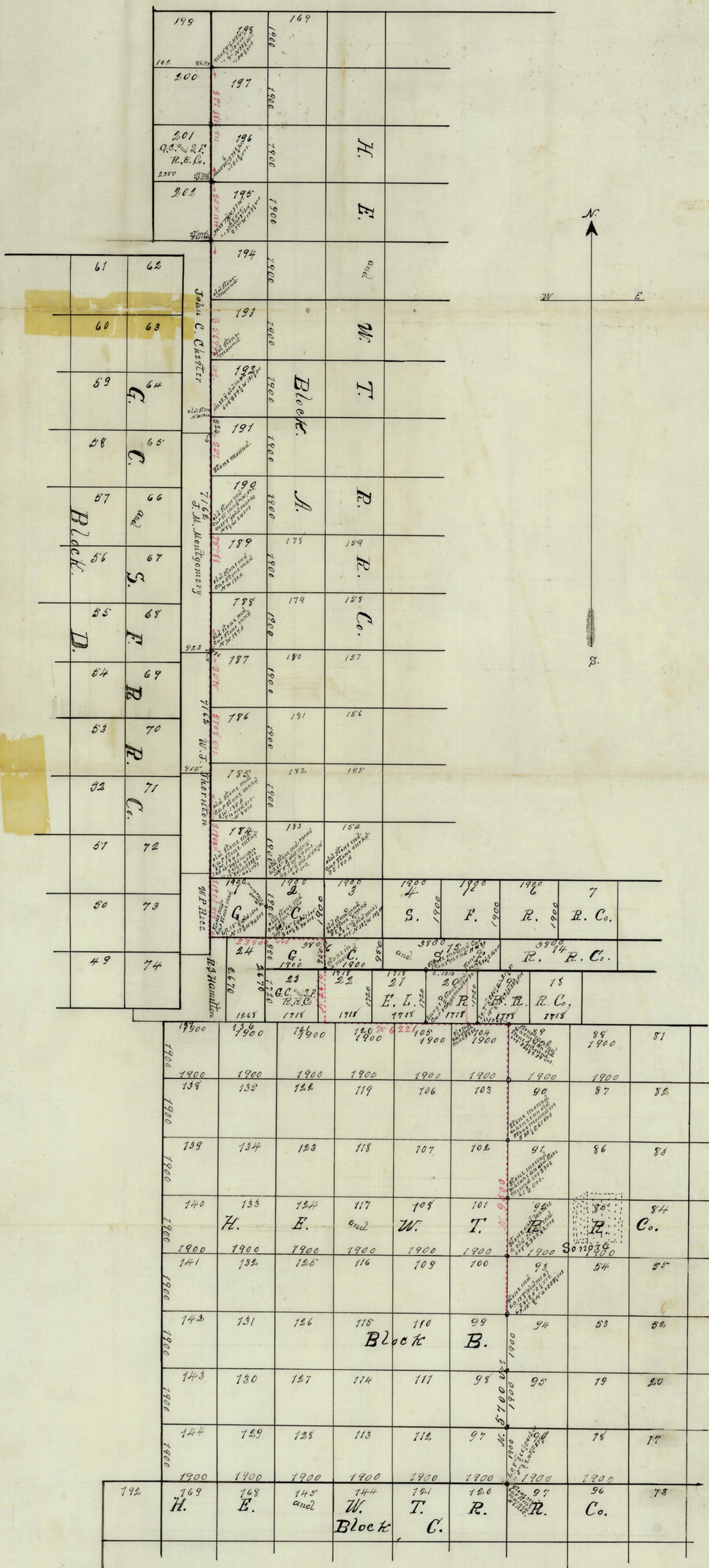
Surveyed by Will H. Boone  
Spe. Dep. Sur. Gen.

Filed in the Genl. Land  
Office Jan'y 16<sup>th</sup> 1882  
by Maddox & Bro.

counter 37465



No. 23  
 FH



Sketch North part Sutton County.  
 Scale 2000 feet to the inch  
 E.C.S.