

D673

THE STATE OF TEXAS,

County of Sutton

I, Peggy Trainer

County Clerk

in and for said County, do hereby certify that the foregoing Revised Map - Portion Sol Mayer Est. dated 4th day of November A.D. 1964, at 1:00 o'clock P.M., and duly recorded the 4th day of November A.D. 1964, at 1:30 o'clock P.M., and in the Plat Records of said County, in Vol. 1 on Page 117.

Witness my hand and the seal of the County Court of Said County, at office in Texas, the day and year last above written.

Peggy Trainer

RECEIVED

Clerk County Court, Sutton

JAN 4 1965

By Edna L. Turner, Deputy

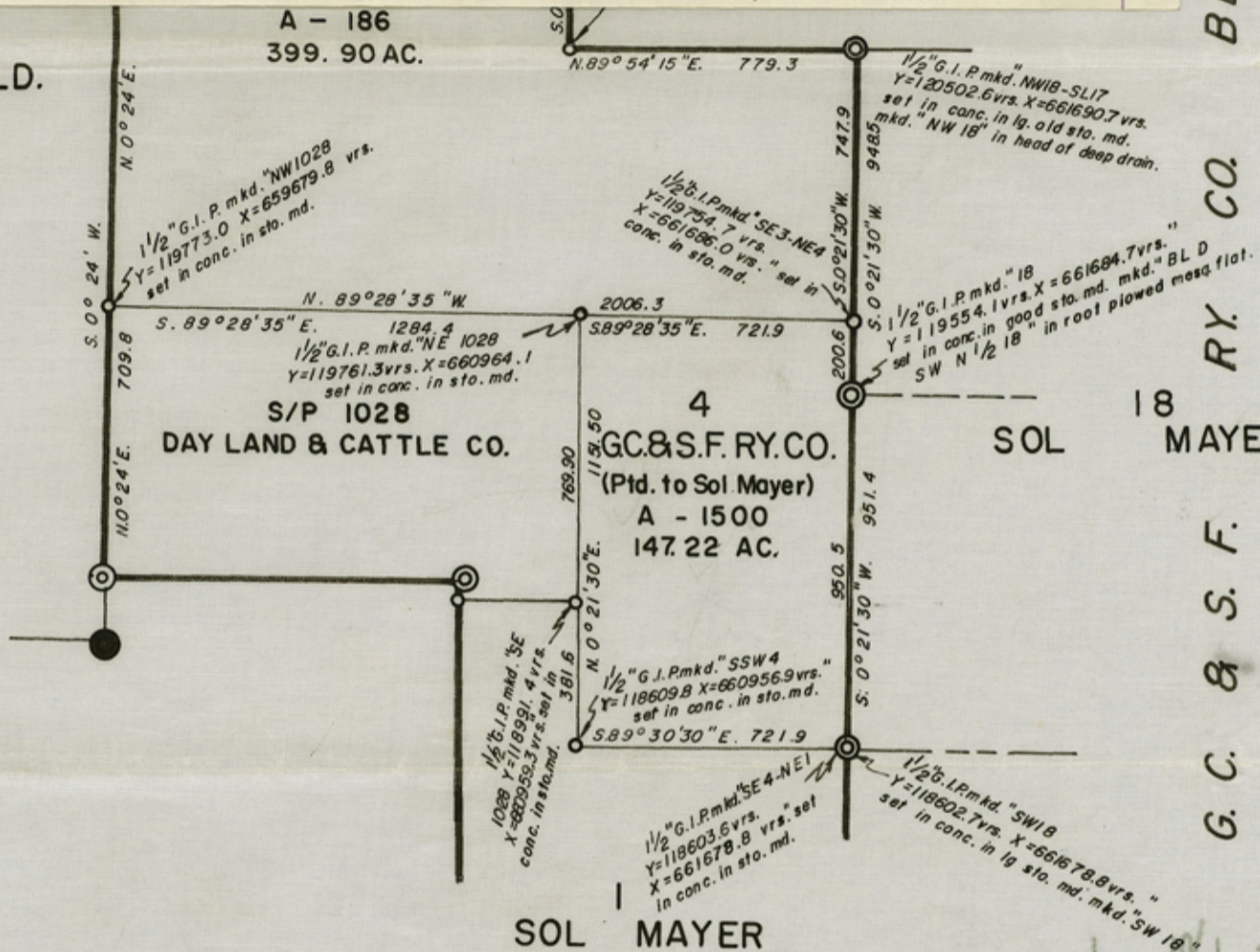
General Land Office

counter 37559

BLOCK D RY. CO. SOL 18 MAYER G. C. & S. F.

8 BEE CO. SCH. LD.

A - 186 399.90 AC.



SCALE: 1" = 500 Varas

NOTE: Courses & Coordinates shown hereon are those of the LAMBERT GRID - CENTRAL ZONE OF TEXAS.

LEGEND

- Original Corners Found
Patented Re-Survey Corners Found
Re-Survey Corners Found
Corners Made by Me

*REVISED MAP SHOWING A PORTION OF SOL MAYER ESTATE LAND, SUTTON CO., TEXAS.

SURVEYED BY ME ON THE GROUND FROM SEPT., 1959 THROUGH MAR., 1964.

Wm. C. Wilson, Jr.

Licensed State Land Surveyor & Registered Public Surveyor No. 963. 1514 W. Beaugard Ave. P.O. Box 1081 Ph. 653-3916 San Angelo, Texas.

*NOTE: This map is a revision of a portion of a map filed in General Land Office by me known as "Sutton Co. Rolled Sketch No. 59", and also filed in Sutton Co. Plat Record Book I, Pg. 116, & in Schleicher Co. Surveyors Records Vol. 5, Pg. 167.

Handwritten notes and signatures on the right side of the map, including 'RECEIVED' and 'FILED' stamps.

counter 37555

DRAWN BY E. C. QUINN

RECEIVED
JAN 4 1965
General Land Office

200 Anderson Texas
P.O. Box 1081 by 223-2816
1214 W. Beamedale Ave.
Bedford Public Surveyor No. 223
Licensed State Land Surveyor &
Licenses State Land Surveyor &

Wm. C. Wilson, Jr.



REVISION BY ME ON THE GROUND FROM 2817, 1961, 1961, 1961, 1961, 1961

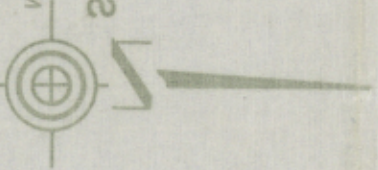
REVISION BY ME ON THE GROUND FROM 2817, 1961, 1961, 1961, 1961, 1961

File No. 58
Sutton County
Sketch File
Filed Jan 4 1965
By JERRY SADLER, Com'r
W.C.

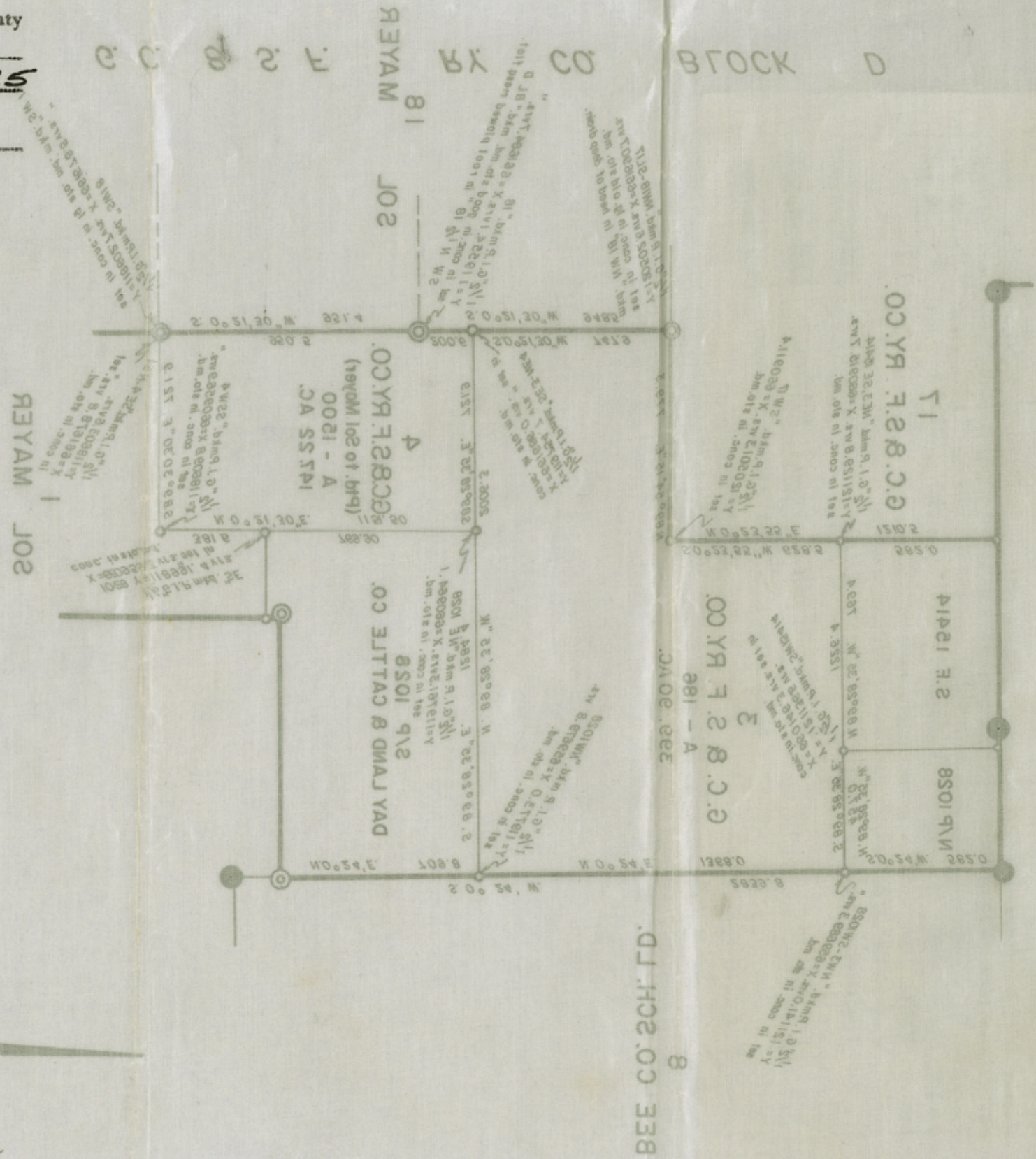
Revised Portion
Rolled SK. 59
By Wm. C. Wilson, Jr.
Mar. 1964

- LEGEND
- = Corners made by me
 - = Re-surveyed Corners Found
 - ⊙ = Re-surveyed Re-surveyed Corners Found
 - ⊙ = Original Corners Found

NOTE: Corners & Conduits shown hereon are those of the LAMBERT GRID



SCALE: 1" = 200'



Counter 37556