

Survey of connecting line between
the N. W. Cor. of Survey No 80
Cert 1539, I & G. N. R. Co.

Block No 6, Randall Co. and
the N. W. Cor. Sur. No 156 Cert.
165. Block ~~no 6~~ & No. ~~Survey~~ ~~no 80~~

Beginning at a rock west 6 ft.
base and 6 ft. high on edge of
steep bluff at head of the Palo-
Duro Canon for the N. W. Cor.
of Survey No 80 as above.

(1) Thence South 17100 yds. to large
earth mound for the S. W. Cor.
Block No 6, I & G. N. R. Co.

(2) Thence East 9500 yds. to earth
mound with cedar stake 26 yds. west
of old dime trail for the S. W. Cor.
Sur. No 203 Cert 1662, Block No
6, I & G. N. R. Co. and the N. W.
Cor. of Sur. No 1 Cert. No 9146.
Block no. 7 J. N. Gibson

(3) Thence South 9500 yds. to large
earth mound with cap rock mound.
x on high divide of plains for the
S. W. Cor. Sur. No 5 Cert. 9148. Block no. 7
counter 37566

4 Thence South with each mile plainly marked with mounds
24900 on earth mound with cedar stake mnd: x. on divide of plains abt 1/4 mile East of prong of Jule Crk. being the S. W. Cor.
No 18 cert. 0/154. Block no. 2
Swisher Co.

5 Thence South with each mile marked with mounds, stones and stakes.
15200 vis: to large earth mound with cedar stake and Buffalo bones on top 80 vis: west of lake being the S. W. Cor. Block W-1
Swisher Co.

6 Thence East 9500 vis: to large mound in valley of plains 200 vis: west of small lake for the S. E. Cor. Block W-1.

7 Thence South 956 vis: a mound.

8 Thence East 5893 vis: a mound. the S. W. Cor. of Survey No 150 cert. 157. A+B. Block W.

9 Thina North 5700 ins: to
large south wind: for the N. W.
Co. Sur: No 156. Cert: 150. A. P.
Brooks & Swisher Co.

I hereby certify that the above is
a true and exact copy of field notes
taken in the field and that the
caves and marks both artificial
and natural are truly described
Recorded in my office in
General Record of field notes
Vol: 1. Pages 117-118

J. J. McElmond
Surveyor Comptroler & Land Off.

Clarendon County Co. Texas.
Feb 20. 1884

N^o 1

Swisher County

T S McDellands

Connecting Line

filed February 27th 1884.

D. N. Robinson

Chf Clerk.

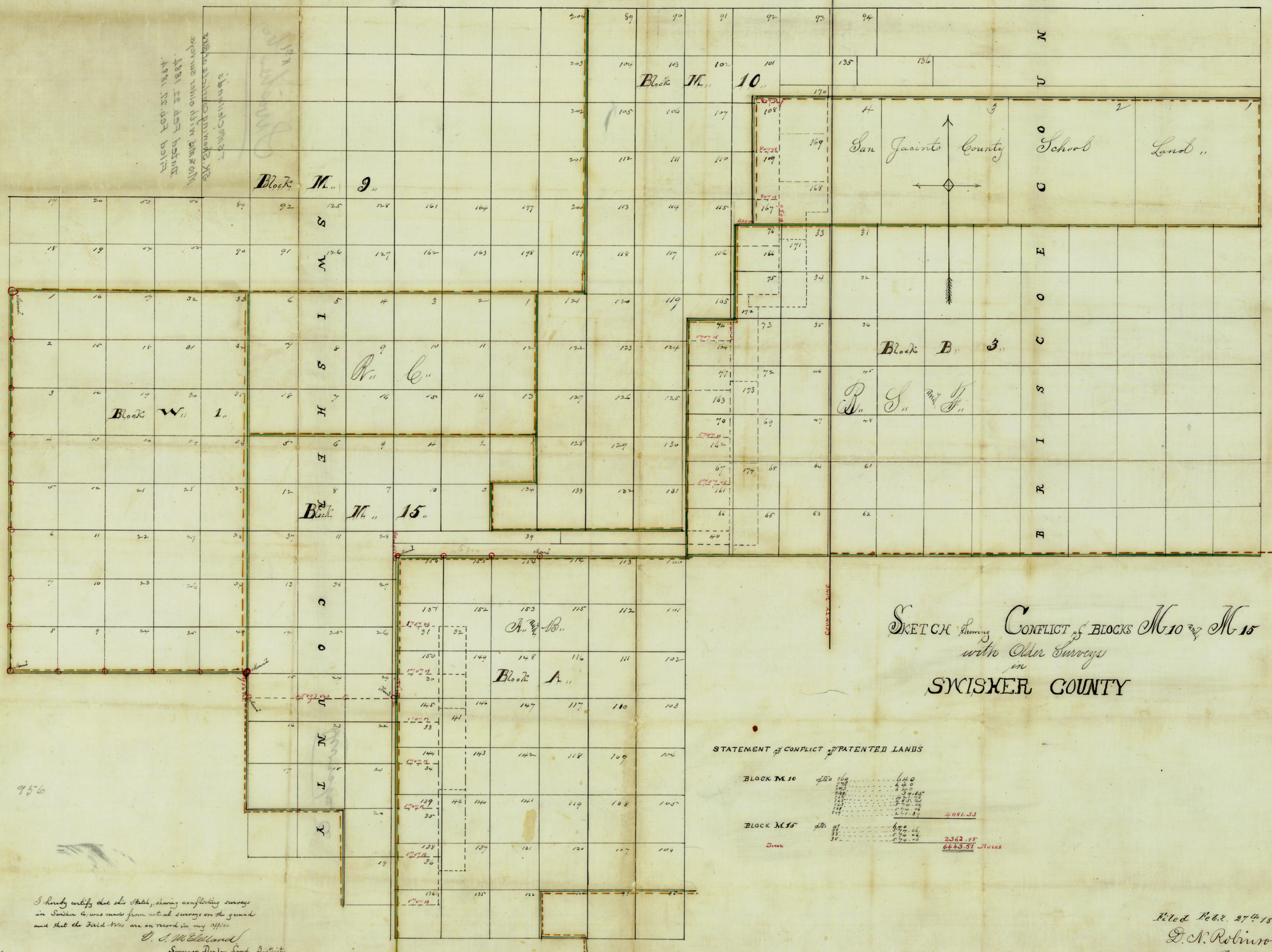
Fr. the NW cor. of #80, 1 & G N R Y Co
BIK 6, and the NW. Cor. of
156, BIK A, A & B.

J.M. 5

counter 37569

Y
T
N
U
C
E
O
S
I
R
B

Filed Feb 23, 1884.
1881 to Feb 23, 1884.
1884 to Feb 23, 1884.
Showing conflict of
surveys



SKETCH showing CONFLICT of BLOCKS M 10 and M 15
with Older Surveys
in
SWISHER COUNTY

STATEMENT of CONFLICT of PATENTED LANDS

BLOCK M 10	Area 169	6440
	170	6440
	171	6440
	172	6440
	173	6440
	174	6440
	175	6440
	176	6440
	177	6440
	178	6440
	179	6440
	180	6440
	181	6440
	182	6440
	183	6440
	184	6440
	185	6440
	186	6440
	187	6440
	188	6440
	189	6440
	190	6440
	191	6440
	192	6440
	193	6440
	194	6440
	195	6440
	196	6440
	197	6440
	198	6440
	199	6440
	200	6440
	201	6440
	202	6440
	203	6440
	204	6440
	205	6440
	206	6440
	207	6440
	208	6440
	209	6440
	210	6440
	211	6440
	212	6440
	213	6440
	214	6440
	215	6440
	216	6440
	217	6440
	218	6440
	219	6440
	220	6440
	221	6440
	222	6440
	223	6440
	224	6440
	225	6440
	226	6440
	227	6440
	228	6440
	229	6440
	230	6440
	231	6440
	232	6440
	233	6440
	234	6440
	235	6440
	236	6440
	237	6440
	238	6440
	239	6440
	240	6440
	241	6440
	242	6440
	243	6440
	244	6440
	245	6440
	246	6440
	247	6440
	248	6440
	249	6440
	250	6440
	251	6440
	252	6440
	253	6440
	254	6440
	255	6440
	256	6440
	257	6440
	258	6440
	259	6440
	260	6440
	261	6440
	262	6440
	263	6440
	264	6440
	265	6440
	266	6440
	267	6440
	268	6440
	269	6440
	270	6440
	271	6440
	272	6440
	273	6440
	274	6440
	275	6440
	276	6440
	277	6440
	278	6440
	279	6440
	280	6440
	281	6440
	282	6440
	283	6440
	284	6440
	285	6440
	286	6440
	287	6440
	288	6440
	289	6440
	290	6440
	291	6440
	292	6440
	293	6440
	294	6440
	295	6440
	296	6440
	297	6440
	298	6440
	299	6440
	300	6440

956

I hereby certify that this sketch, showing conflicting surveys in Swisher Co., was made from actual surveys on the ground and that the field notes are on record in my office.
D. J. McEllland
Surveyor Deering Land District.

Feb. 22, 1884

Filed Feb. 27, 1884.
D. N. Robinson
Chf. Clerk.

COMPLET # 13401