

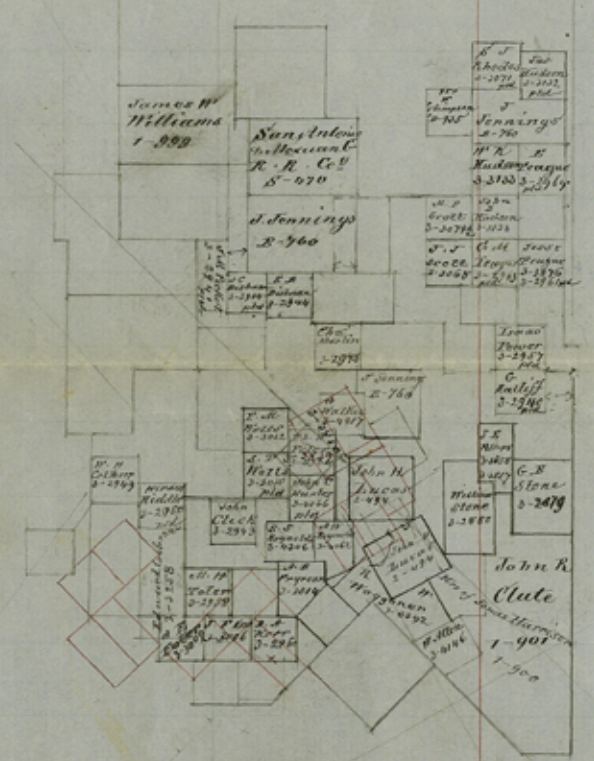
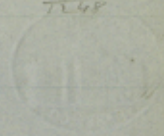


Shelby Co  
School Land

I W. S. Givley County Surveyor in & for Comand  
 Counts do hereby Certify that the foregoing sketch  
 is a true and correct representation of the  
 surveys represented in said sketch as is represented  
 from the Records of my Office at Fort Worth  
 Texas under my hand Aug<sup>25</sup> 1857  
 W. S. Givley Co. Surveyor  
 counter 37698

117 12 00 + nom

36  
804  
TL48



FILE 11. Ferrant

counter 37699

File 11

Tarrant Co

Recd Sept 9<sup>th</sup> 1859  
2. " Jan 13<sup>th</sup> 1860

East part

W Lively's SK. of surveys in Eastern  
part of County.

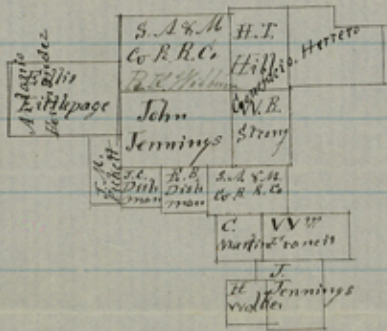
Dated Aug. 22, 1859

Filed Jan, 13, 1860.

9893

906  
2586

055  
2451



I W. G. Girty County Surveyor of Garrard County do hereby certify that the above sketch is a true & correct sketch as is represented from the Records of my Office at Gads Warts this December the 27<sup>th</sup> 1859

W. G. Girty  
County Surveyor

New January 13/60 Los all asten  
counter 37701

File 11

Tarrant County  
Recd January 11/60

counter 37702