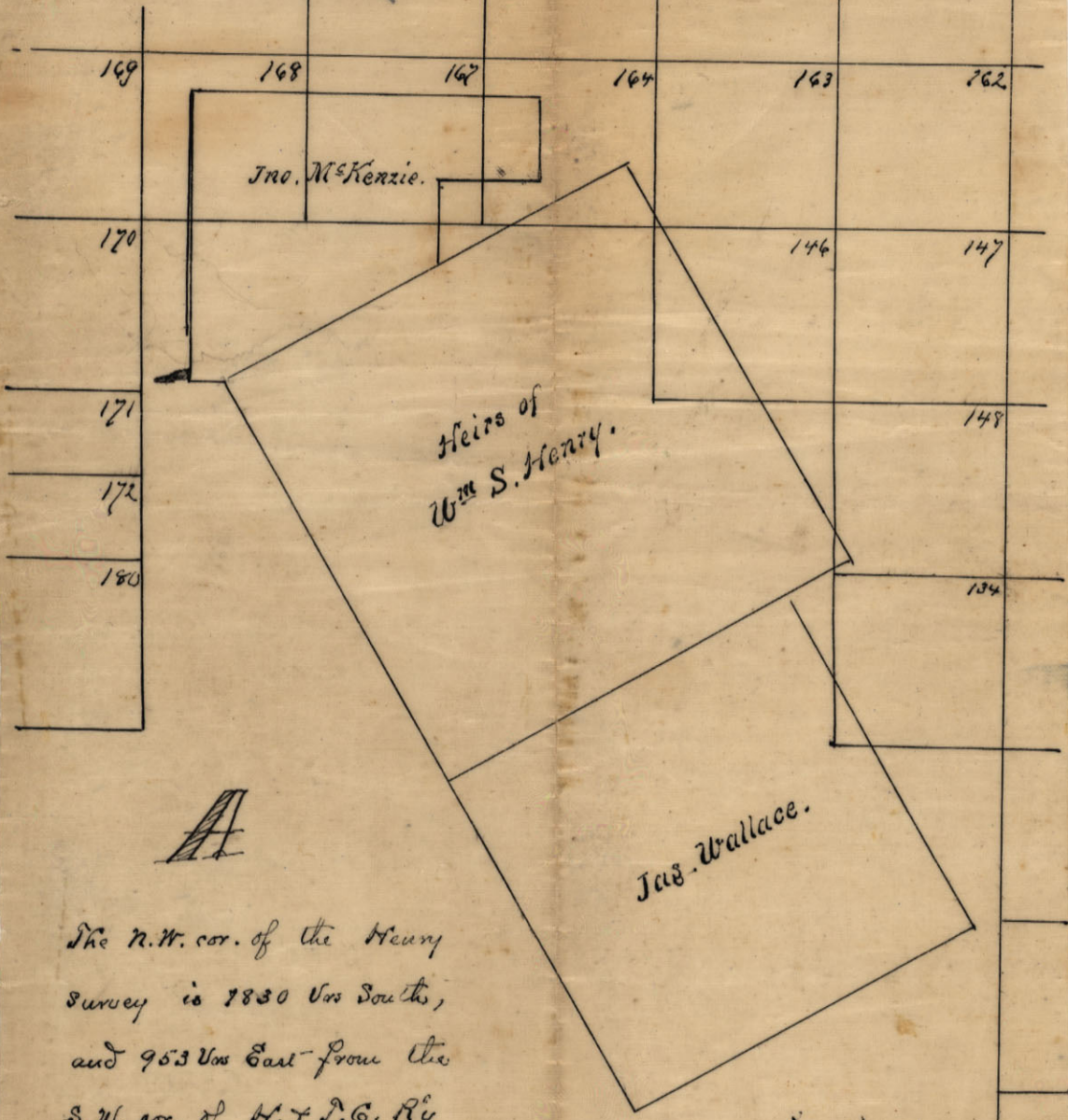


File No B
Taylor Co. Ok. File

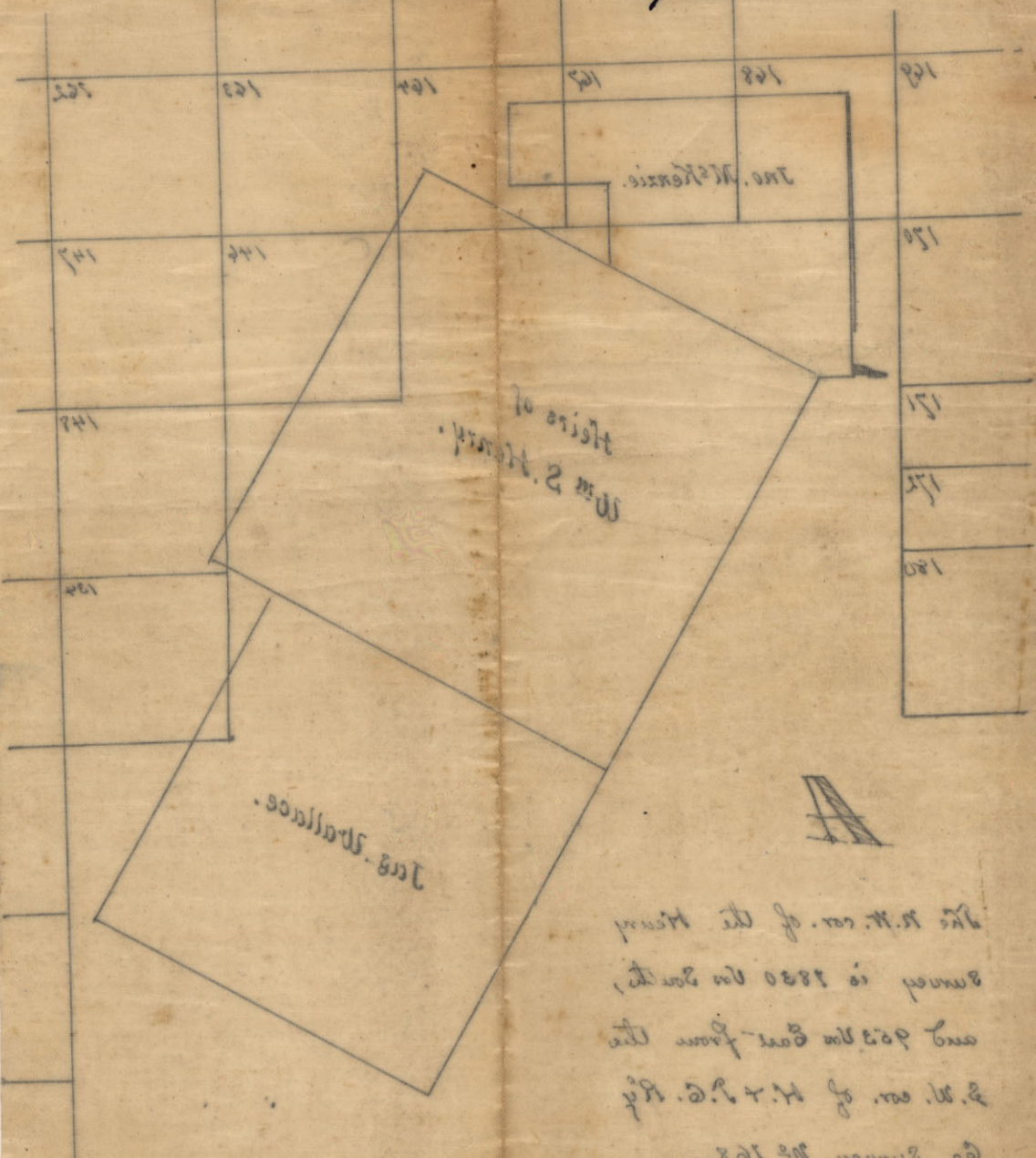


The N.W. cor. of the Henry
 Survey is 7830 Yds South,
 and 953 Yds East from the
 S.W. cor. of M. & P. C. Ry
 Co. Survey No 168.

Filed in the Genl.
 Land Office Jan'y 19th 1879.
 W. C. Wall

17788 Counter 34773

File No A
Taylor Co. Sk. File

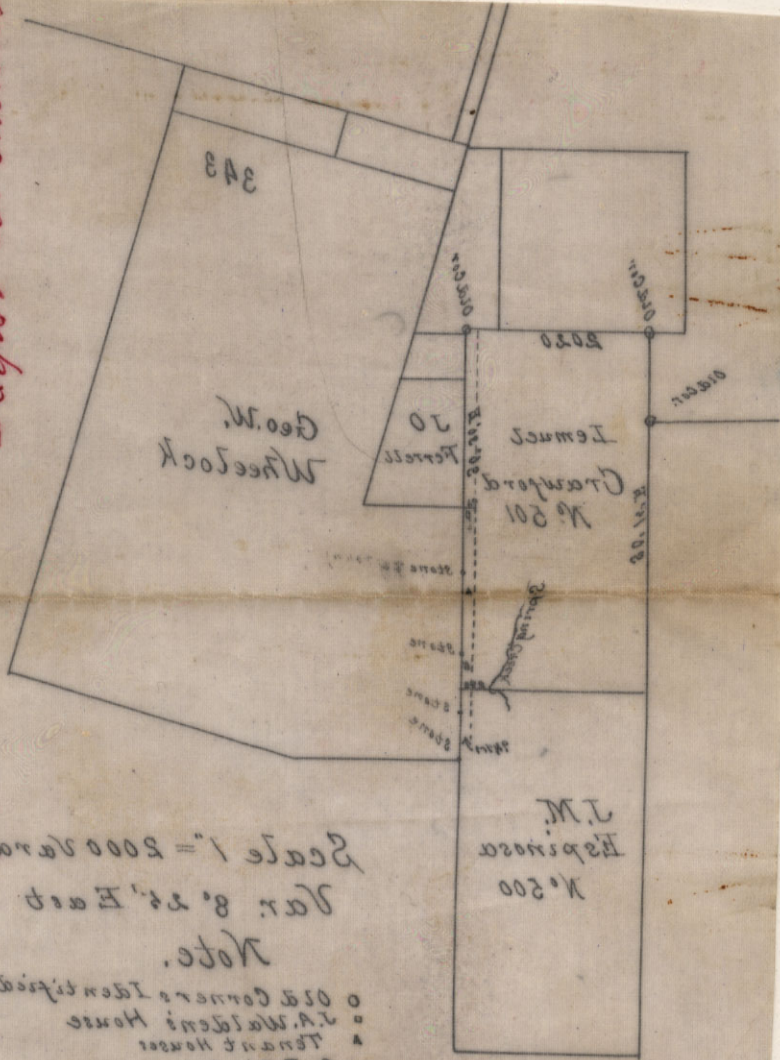


The N.W. cor. of the Henry
survey is 2880 in length,
and 903.00 in width from the
S.W. cor. of N.T.S. R.R.
Geo. Wallace No 108.

Filed in the
Land Office June 19th 1871
H.C. Wall

88449

5 K. "A"
Taylor Co. Sketches



Note.
Var. 8. 25' East
Scale 1" = 2000 Yards

- o Old Corners Identified
- o J.A. Walden's House
- o Tenant House
- o Subdivision Corners of the Geo. W. White Lock

See letter W.A. Riney
to Gen. Taylor August

88450

15488