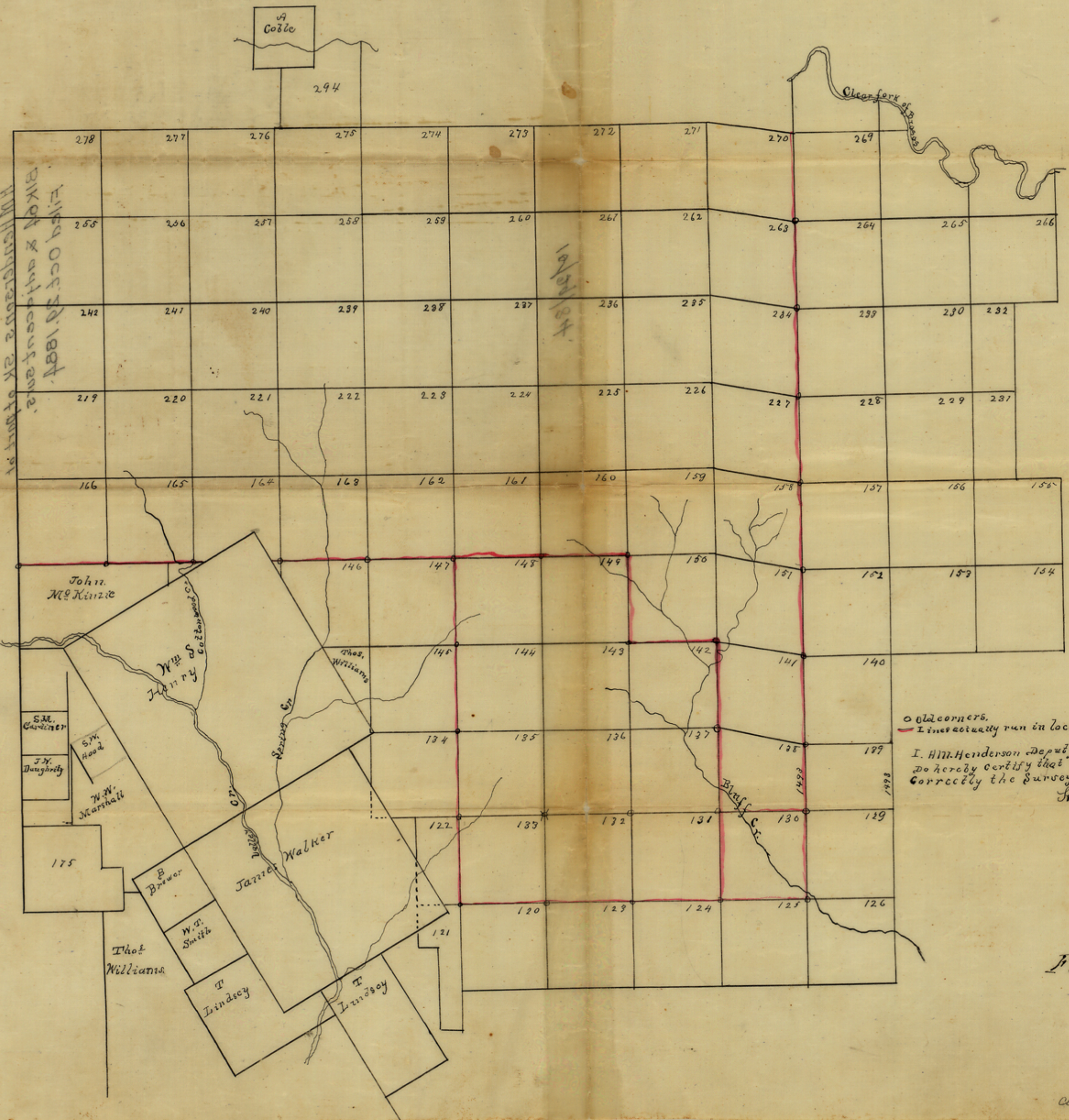




Map for County
1884

Filed Oct 28 1884
BROOK & adjacent parts
of Taylor Co. Ark.



o Old corners.
 — Line actually run in location Block 64
 I. H. Henderson Deputy Surveyor of Taylor Co.
 do hereby certify that the above map shows
 correctly the surveys thereon.
 H. M. Henderson
 Deputy Survey. T. Co.

Filed Octob. 29th 1884
 D. A. Robinson
 Chf. Clerk.

