

File No. Sk. File 18

TERRELL County

Filed _____ 19 _____

J. EARL RUDDER, Com'r.

By _____

Blks R2, 150, 151, 152,
154 etc.

office sk.

J. EARL RUDDER
COMMISSIONER
GENERAL LAND OFFICE
AUSTIN 14, TEXAS



Counter 37941

Terrett Co 18,
~~Geo Co.~~

Skeld file
(18)

See carbon letter
in SF. 8225.
referring to original
of this.

Don Reading

10/3/08 -

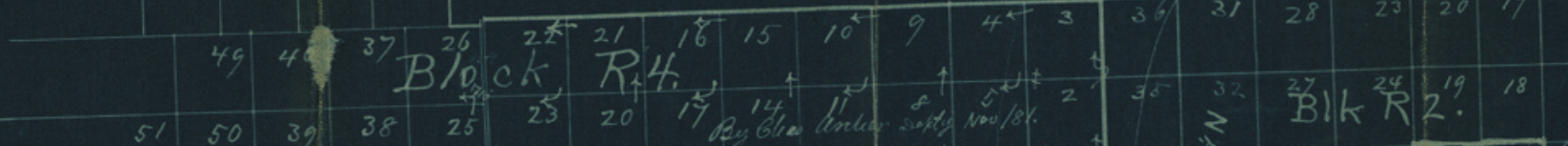
Auto Terrett Co

46	43	34	29
47	42	35	28
48	41	36	27

On line of Pecos & Terrell Cos

Rk. mid. 2 ft. high low profile of
 top of bluff. mid. M2. from
 sole. a work mid. 3 feet high cap rock
 thick. M is 158 vrs. 320 m. W.
 Stake mid. for cov. from wh. a rock mid. with
 a large flat rock on end mid. N. alt. 20 m. also road,
 1570 vrs. N. & 1481 vrs. East.

Manders in red in Weed see his
 bounding line. I have reversed
 on this to show the difference with
 distance.



Rk. mid. P2 on East side of
 for 50 vrs. on top of hill. from
 Rk. mid. mid. Pan S. side of road is
 in vrs. N. & 610 vrs. W.
 Rk. mid. side of road for S. East.
 on point of bluff
 Rk. mid. mid. X, Y, Z
 on top of hill. from
 SE on vrs. N. & 300 vrs. W.
 mid. X, Y on point of bluff
 on East. Side of road. S. 2 vrs. W.
 and 313 vrs. East.

Stake mid. for wh. a Rk. mid.
 on large rock at point L. 1111
 vrs. 20 vrs. N. & 100 vrs. East.

GH & SA. R.R.
 Rosentfeld

Scale 4000 vrs. = 1 inch.

Brewster Co.

Rk. mid. mid. J. 3 vrs. on
 a stone wall on top of a large
 Rockfall on vrs. N. & 100 vrs. East.
 mid. J. is 971 vrs. N. & 662 vrs. East.

Rk. mid. mid. K. for cov.
 on top of
 Rk. mid. 2.5 high mid. L. 2 vrs. E 332 vrs.

Point L constructed from point P
 Stake mid. for wh. a Rk. mid. 3 feet high
 on point of bluff 150 vrs. N. of road, cap Rk.
 mid. L. is 832 vrs. N. & 309 vrs. W. another
 Rk. mid. 2.5 high mid. L. 2 vrs. E 332 vrs.

Rk. mid. mid. O2 on the
 top side of road for S. vrs.
 134 vrs. East. Rk. mid. mid. O1 is
 on East. Side of road. S. 2 vrs. W.

Counter 37993