

35-64

El Paso Texas

June 28th 1937.

Hon. Wm. H. McDonald

Commissioner General Land Office

Austin Texas

Dear Sir

Following is a brief report of surveys made by me in Terrell County Texas, to determine the position of certain surveyin Blocks 152, and 154 ^{GL & R.R. R.R. Co.} D.C. & S.F. by Co. The locations of these sections and their corners depend upon, what is commonly known and called the "Durrell Traverse". This being a traverse run by Mr. Durrell at an early date and extends from Maxon Springs in Brewster County to the "Myers" or "Painted Spring" in Terrell County. This traverse was run along the old Military Road between these springs and Mr. Durrell, established monuments at ^{certain} ~~the~~ points of the traverse and named them by letters of the alphabet, and from these mounds placed corners for the surveys which it crosses. In some twenty years of surveying in the vicinity I have had occasion to check almost every monument Durrell placed.

The surveys involved at present are in Blks 152 and 154, above mentioned and are the results of some two months of intensive work in their immediate vicinity, and involving altogether some two hundred sections of land, then known as the "Downie Ranch Estate".

I note in your letter to Mr. Stanley Banks of San Antonio Texas dated May 13th. you claim I have shown "excessive creep". I believe the location and identification of the original corners on the ground justify my
P
counter 37961

field notes, as it has always been held by your office and the Courts that the location of the corners on the ground are the controlling feature.

I am submitting here with a tracing showing connections run by me on the ground, and of check line run where I found that the actual ground locations did not check the field note calls as given by Mr. Durrell. I am also enclosing copies of my traverse sheets of lines run between the Durrell monuments and corners. While only one of these sheets covers the sections in question namely Surveys 8 and 16 Blk. 154, I am sending the others to show the continued and frequent discrepancies between the Durrell corners and monuments as located and identified on the ground.

Having had occasion previously to locate Durrell's "N" monument and corner I began this traverse from that point and ran East and West. This "N" mon. is near the SE corner Survey 8 Block 152. I ran South 77 West from this monument "N" and located Durrell's "N" monument and corner in the position indicated on the plat as the "M" Mon. and Corner. Finding that the corners did not check too closely, I ran East from the NE 8 Blk 154 or "M" Monument to check my traverse run for possible error. At 1940 varas East of NE 8, I found Durrell's S.W. 8 Blk 152 to be 130° varas north of this point. Continuing my line East at 3843 varas I found that the SE 8, where I began my traverse, 134° varas north, checking my traverse exactly in northing and 7⁴ varas off East and West. I then returned

P1
counter 37962

to the N.E. corner 8 BLK 154, and began at the "M" man which is 158°
varas south and 380° varas west from this corner, and ran a traverse
southwest, to the "L" corner and M monument. at this corner I found
the monument to be 596° varas ^Nwest and 322° west of corner.

From the SW 16 I ran a traverse west to the SW 13 BLK 154, finding
this corner to be somewhat out of position. I returned to SW 16 and ran
west, at 2057 varas finding Durrell's "K" corner to be 217° varas north and
from which his "K" man bears North 377° varas and west 109 varas.

Continuing on west 6111° varas in all I found the "J3" corner to be
174° varas north of this point, checking my traverse flat, thus proving to my
satisfaction that the entire line of corners were somewhat out from their
call positions. To further check the "J3" corner I ran north from it,
to the "J" monument which is a rock marked "j" with other rocks
around it and being on a boulder ~~some~~ of large size, and an absolute
point on the Durrell traverse. This "J" man was found to be 1013 varas
north and 996 varas East of "J3" corner. Mr Durrell call for same
is north 971 varas and East 62 varas. Showing a difference of 42
varas in northing and 37.6 varas easting with very little over 1/2 mile distance.

Returning to SW 16 "L" corner, I checked to the "L" man and to the
"L2" man on south line Survey 16. I found the L2 corner to be 384 East +
of "L" corner. I found the "K" man, to be as follows actual Dist

	North	West
actual Dist	596.5	322.0
Call. Dist.	832.0	300.0

I then ran N45°E 5376 varas from SW 16 and established a point
from which the N.E. 8 bears South 506 varas and west 2108 varas. This
served to check my traverse between the two corners.

Returning to my point run east from the NE 8 Blk 154, and 134 acres of the SE 8 Blk 152 I continued East 1885 varas, found the SE 7 Blk 152 to be 134 varas north and from which Rock mound I found the "O" monument to be 395 varas north and 149 varas East.

From this SE 7, ~~area~~ which is also the NW corner Sec 11. I ran south 45 deg run East 2688 varas and found this point to be 86.7 varas East and 36.7 varas south of Durrells NE 18 or the "P2" corner, and from which corner Durrells "O" monument bears 113° north and 64° west. From this connection I based my field notes of survey 18, and ran west from the "P2" corner at NE 18, and placed a rock mound at the distance 1814 varas, turning north I ran some 750 varas to top of a ridge from which I could see my flag at NW 11. (the "O" corner.") I saw that my line would hit within a foot to the west of the flag and considering this sufficient check. I returned to the NW 18 and ran south at 1900.8 varas established a rock mound at the SW 18; on this line at 1846 varas I spaced 30 varas west of first rocks in a circle, but being on the point of a hill I considered them to have been placed by the Indians as a trail mark indicating the presence of water in the vicinity, a sign which prevails in this southwest part of the state, and which at times has caused considerable confusion, having been mistaken for corners. I respectfully submit this report together with the plat and field notes for your information and consideration. I have corrected the field notes

P3
counter 37964

of Survey 18. The NW¹/₄ and East half same, in accordance with your ~~past~~
description of the Patented SW¹/₄ said Survey. you will note that there
is only 10 varas difference between my surveys and the field notes of SW¹/₄ ^{doubled} in
the south line of said Survey.

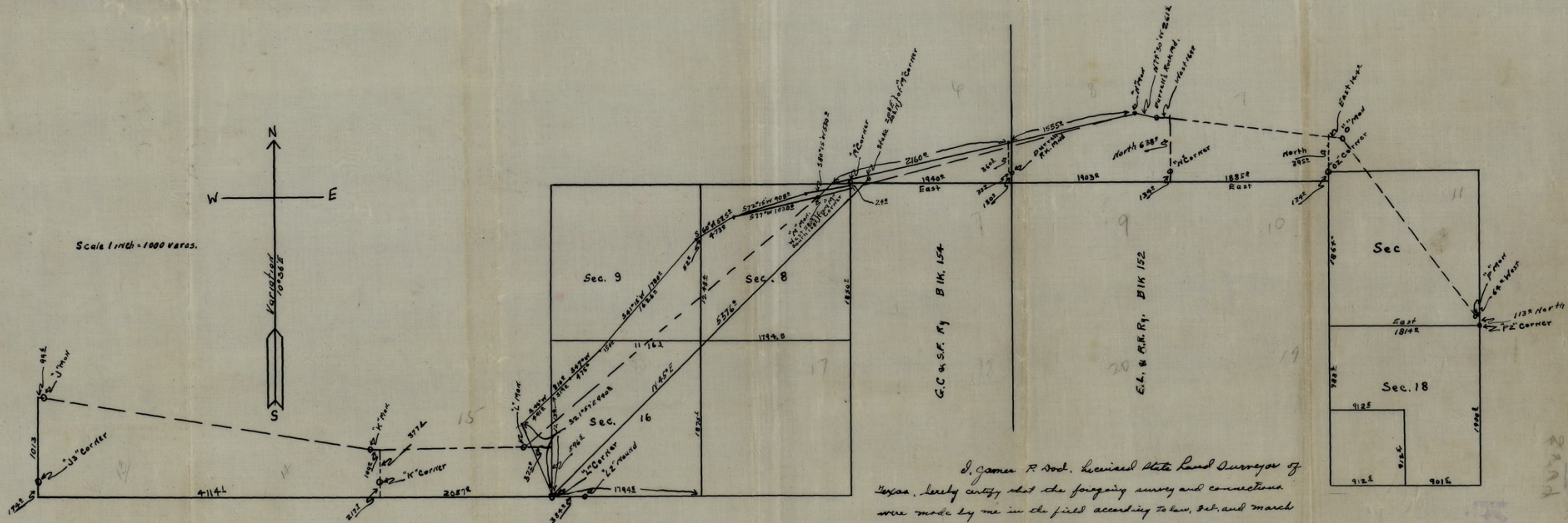
Respectfully submitted

James P. Dod
Licensed State Land Surveyor of Texas.

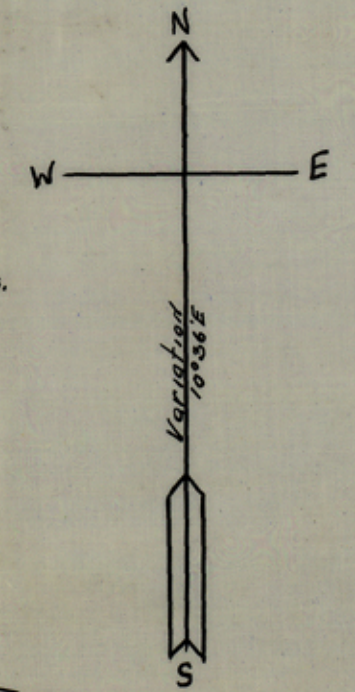
RECEIVED

JUL 23 1937

REFERRED TO MAP



Scale 1 inch = 1000 varas.



I, James P. Dod, Licensed State Land Surveyor of Texas, hereby certify that the foregoing survey and connections were made by me in the field according to law, Feb. and March 1929, and adopted for this survey June 28th 1937. Witness under my hand and seal of office at El Paso Texas. June 29, 1937.

James P. Dod
Licensed State Land Surveyor
of Texas.

RECEIVED

counter 37966

P5

COMPUTED 19 BY

CHECKED 19 BY

SURVEY

Traverse from SW 16 BLK 154 (2" corner) to SW 13 BLK 154 (3" corner).

Jewell County, Edge Brewster Co. Dawnie Ranch.

STATION	BEARING	DISTANCE	COSINE	SINE	LATITUDE		DEPARTURE		D M D	NORTH AREA	SOUTH AREA	COORDINATES
					NORTH	SOUTH	EAST	WEST				
2" Corner SW 16 BLK 154	N 21° 57' W	990 [±]			872 [±]			351 [±]				
	S 48° 30' W	254 [±]				168 [±]		190 [±]				
	S 77° W	1700 [±]				382 [±]		1656 [±]				
	N 84° 30' W	824 [±]			79 [±]			820 [±]				
	N 74° 30' W	1515 [±]			404 [±]			1459 [±]				
	N 60° 30' W	1445 [±]			711 [±]			1257 [±]				
	S 19° 30' W	932 [±]				878 [±]		311 [±]				
	S 15° W	480 [±]				463.6		124 [±]				

3" Corner SW 13 BLK 154												

SW 16 BLK 154 (2" Corner)												
West	2057 [±]											
West	4114 [±]											
North	174 [±]											
SW 13" 3" Corner												
From this corner												
North	1013 [±]											
East	99 [±]											
to "J" Mon.												

→ from this point Run North 217' to "K" corner, or North 377' and West 109' to "K" Mon.

76

COMPUTED _____ 19 _____ By _____

CHECKED _____ 19 _____ By _____

SURVEY

Traverse from N.E. 8 (M corner) Block 154 to SW 16 (L corner) Block 154.

Jewell County, Lawrence Ranch

STATION	BEARING	DISTANCE	COSINE	SINE	LATITUDE		DEPARTURE		D M D	NORTH AREA	SOUTH AREA	COORDINATES		
					NORTH	SOUTH	EAST	WEST						
<i>N.E. 8 (M corner) Block 154</i>														
	<i>South</i>	<i>158^o</i>				<i>158^o</i>								
	<i>West</i>	<i>380^o</i>						<i>380^o</i>						
<i>M^o Men</i>														
	<i>S 77° W</i>	<i>1030^o</i>				<i>231^z</i>		<i>1002^o</i>						
	<i>S 60° W</i>	<i>525^o</i>				<i>262^z</i>		<i>454^z</i>						
	<i>S 41° 15' W</i>	<i>1780^o</i>				<i>1338^z</i>		<i>1173^o</i>						
	<i>S 47° W</i>	<i>475^o</i>				<i>324^o</i>		<i>347^z</i>						
	<i>S 46° W</i>	<i>810^o</i>				<i>562^z</i>		<i>582^z</i>						
	<i>S 21° 57' E</i>	<i>440^z</i>				<i>872^o</i>		<i>351^z</i>						
<i>SW 16 (L corner) Block 154</i>														
	<i>N 45° E</i>	<i>5376^o</i>				<i>3801.4</i>		<i>3801.4</i>						
	<i>South</i>	<i>50^o</i>												
	<i>West</i>	<i>210^o</i>						<i>210^o</i>						
<i>N.E. 8 (M corner)</i>														

71

COMPUTED _____ 19____ By _____
 CHECKED _____ 19____ By _____

SURVEY

Traverse from SE 8 Blk 152 (Yarrow) to NE 8 Block 154 (M Corner)

Pg

Jewell County, Bawrie Ranch.

					LATITUDE		DEPARTURE		COORDINATES		
STATION	BEARING	DISTANCE	COSINE	SINE	NORTH	SOUTH	EAST	WEST	D M D	NORTH AREA	SOUTH AREA
<i>SE 8 Blk 152.</i>											
	<i>North</i>	<i>638°</i>			<i>638°</i>						
	<i>West</i>	<i>169°</i>						<i>169°</i>			
<i>Surrella Rock mch.</i>											
	<i>N 74° 30' W</i>	<i>261½</i>			<i>69°</i>			<i>252°</i>			
<i>"N" Mer.</i>											
	<i>S 77° W</i>	<i>3715°</i>				<i>835°</i>	<i>8</i>	<i>3619°</i>			
	<i>S 46° 45' W</i>	<i>240°</i>				<i>164°</i>		<i>174°</i>			
<i>"M" Mer.</i>											
	<i>East</i>	<i>380°</i>					<i>380°</i>				
<i>NE 8 Blk 154</i>	<i>North</i>	<i>158°</i>			<i>158°</i>						
<i>"M" Corner</i>											
	<i>East</i>	<i>3843°</i>					<i>3843°</i>				
	<i>North</i>	<i>139°</i>			<i>139°</i>						
<i>SE 8 Blk 152.</i>											

Faint mirrored bleed-through text from the reverse side of the page.

Pg

counter 37969

Sketch File No. 26

TERRELL County

James P. Dod Sur.

Report-sketch-Traverse

7/23/37 1937

WM. H. McDONALD, Com'r

Leslie
File Clerk

Descriptive: Sec 8-16-BLK 154663

Sec 18 BLK 152 L.R.

STATION	BEARING	DISTANCE	COSINE	SINE	LATITUDE		DEPARTURE		D M D	COORDINATES	
					NORTH	SOUTH	EAST	WEST		NORTH AREA	SOUTH AREA

CHECKED 18 SA
 COMPUTED 18 SA

SURVEY
 counter 37970

87

88