

File No. 36

TERRELL County

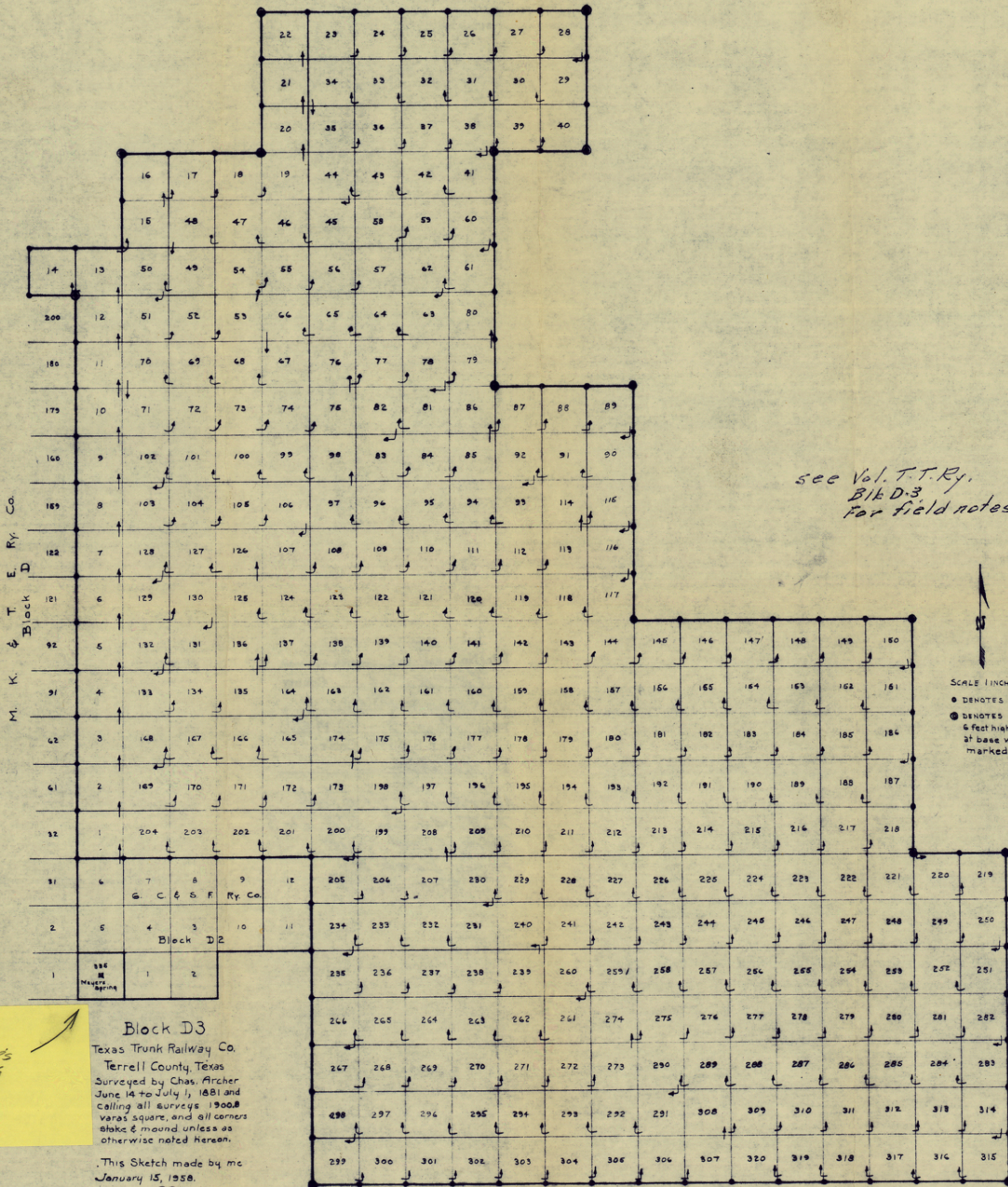
Sketch File

Filed Aug. 7 19 67

JERRY SADLER, Com'r

By V. E. Blasing

Working Sketch
T. T. Ry. Co, Blk. D-3
Compiled from
Field Book by
J. D. Freeman



see Vol. T.T.Ry.
Blk D-3
For field notes

SCALE 1 INCH = 3800 FT
 ● DENOTES Stone Mound
 ⊙ DENOTES Stone Mound
 6 feet high and 3 feet
 at base with cap stone
 marked "D"

Note:
MEYER'S
SPRING

Block D3
 Texas Trunk Railway Co.
 Terrell County, Texas
 Surveyed by Chas. Archer
 June 14 to July 1, 1881 and
 calling all surveys 1900.8
 varas square, and all corners
 stake & mound unless as
 otherwise noted hereon.
 This Sketch made by me
 January 15, 1958.
 J.D. Freeman
 J.D. Freeman