

STATION	LATITUDE LONGITUDE	AZIMUTH	BACK AZIMUTH	TO STATION	METERS SEA LEVEL	VARAS SURFACE
NW Corner Terry Co. A large conc. mon. set by A. L. Harris COORDINATES ZONE: X: Y:	33 23 17.200 102 35 39.229			This position determined by W. J. Williams.		
SE Sec. 13 Blk X Terry Co. 1½" Tubing COORDINATES ZONE: X: Y:	33 23 5.361 102 25 10.281	119 27 03.4 223 17 29.4	299 22 38.4 43 19 44.5	Mallet (U S) Smart (U S)	14272.80 9239.80	16860.30 10914.87
SW Sec 28, Blk D 11 Terry Co. Spike in center of paved roads going S-E-W COORDINATES ZONE: X: Y:	33 19 36.828 102 24 43.972	153 44 19.4 195 35 41.6	333 41 52.6 15 36 33.8	Sundown W T Gordon Hill	15571.69 9117.91	18394.66 10770.88
SE Sec 41 Blk D 111 Terry Co. Railroad spike in center of paved road N-S and in center of graded road E COORDINATES ZONE: X: Y:	33 17 52.587 102 24 44.093	265 09 53	85 10 03.4	Britton (U S)	522.06	616.70 Taped <i>county 38039</i>

STATION	LATITUDE LONGITUDE	AZIMUTH	BACK AZIMUTH	TO STATION	METERS SEA LEVEL	VARAS SURFACE
SW Sec 81 Blk DD Terry Co. 1 1/4" IP buried in center of road going E-W marked with stone by W. D. Twichell in 1902. COORDINATES ZONE: X: Y:	32 57 49.274 102 33 36.842	" " "	" " "	This corner identified and located by W. J. Williams.		
SW Sec 46 Blk K Terry Co. Large stone marked "X 3 Bars" another pile of stone bears S. 50 varas set by Mark E. Ragsdale in 1902. COORDINATES ZONE: X: Y:	33 06 29.821 102 35 37.409	205 23 54.8 321 51 24.9	25 24 56.5 141 53 19.3	Tokio (U S) Alderson (U S)	6821.37 8805.32	8058.0 10401.6
NE Sec 18 Blk K Terry Co. 1" IP Patent corner COORDINATES ZONE: X: Y:	33 17 56.109 102 34 03.900			Position determined from U S Station POOL by measurement.		
NW Sec 3 Blk D 14 Terry Co. 1 1/4" IP set by W. J. Williams in 1944 to be 12 Mi. N. & 37 Mi. W. of Double Lakes corner in Lynn County. COORDINATES ZONE: X: Y:	33 23 04.929 102 34 04.904	191 06 52.5	11 07 21.9	Mallet (U S)	7157.29	8454.83

counter 78090

STATION	LATITUDE LONGITUDE	AZIMUTH	BACK AZIMUTH	TO STATION	METERS SEA LEVEL	VARAS SURFACE
Center W line Sec 160 Blk T Terry Co. 1" IP under fence Webb vs Moore Terry Co. Dist. Ct.	33 14 48.369 102 21 34.091	315 57 41.8 19 01 54.7	136 00 13.5 199 01 19.6	Old Brownfield WT Gomez # 2 (U S)	10324.65 5106.39	12196.39 6032.12
COORDINATES ZONE: X: Y:						
NE Sec 1 Blk D 12 Terry Co. Square head bolt in center Hiway and roads N-S	33 10 52.802 102 21 36.653	146 39 19.4 257 09 02.4	326 38 45.6 77 11 56.0	Gomez # 2 (U S) Paymaster W T Brownfield	2908.65 8423.71	3435.96 9950.83
COORDINATES ZONE: X: Y:						
SW Sec 12 Blk C 36 Terry Co. Center of F M road going E-W and graded roads N-S	33 01 18.277 102 22 14.286	Taped line to U S Station Winegard.				
COORDINATES ZONE: X: Y:						
NE Sec 20 Blk C 31 Terry Co. 1" IP buried in center of E-W road set by W. D. Twichell in 1902.	32 57 49.288 102 12 32.840	This position determined by W. J. Williams from auxiliary Stations.				
COORDINATES ZONE: X: Y:						County 38092

SYLVAN SANDERS, LUBBOCK, TEXAS

STATION	LATITUDE LONGITUDE	AZIMUTH	BACK AZIMUTH	TO STATION	METERS SEA LEVEL	VARAS SURFACE
NE Sec 10 Blk C 39 Terry Co. Stone set by W. D. Twichell in 1902 for the original NE corner of Sec 10. COORDINATES ZONE: X: Y:	33 01 17.762 102 07 45.380	" "	" "			
		This corner identified by and located by W. J. Williams in Oct. 1940 by auxiliary Station now destroyed.				
NE Sec 37 Blk O Terry Co. A 2" GIP with brass cap buried in E edge road fence 24.9 N. fence 17 W Brownfield vs Deaton. COORDINATES ZONE: X: Y:	33 04 47.376 102 06 04.155					
		This corner located by auxiliary Station now destroyed.				
Old Brownfield W T COORDINATES ZONE: X: Y:	33 10 47.360 102 16 57.059	41 43 11.2 106 23 49.5	221 40 03.5 286 20 42.6	Lahey (U S) Gomez # 2 (U S)	13383.44 9215.13	15809.71 10885.73
Paymaster W T Brownfield COORDINATES ZONE: X: Y:	33 11 53.499 102 16 19.578	39 24 01.8 93 17 40	219 20 33.5 273 14 12.6	Lahey (U S) Gomex # 2 (US)	15363.20 9827.34	18148.38 11608.93

counter 38093

STATION	LATITUDE LONGITUDE	AZIMUTH	BACK AZIMUTH	TO STATION	METERS SEA LEVEL	VARAS SURFACE
SW Sec 107 Blk T Terry Co. Railroad spike in center of F M road going N-S	33 14 20.834	209 36 05.5	29 38 16.9	Meadow W T	12538.27	14811.32
	102 16 26.807	269 58 55.4	90 00 37.7	SW Sec 56, Blk T	4823.66	5698.14
COORDINATES ZONE: X: Y:						
SW Sec 56 Blk T Terry Co. Center of F M road going E-W and graded road N-S.	33 14 20.847	157 26 48.4	337 25 41.4	Wooldridge (US)	8224.56	9715.58
	102 13 20.483	187 11 23.4	7 11 52.6	Meadow W T	10986.02	12977.66
COORDINATES ZONE: X: Y:						
SW Sec 54 Blk 4 X Terry Co. Center of cross roads	33 17 49.755 102 11 17.193	Located from auxiliary station Spring in N end Richlake bears S 37° 54' W. 572 varas.				
COORDINATES ZONE: X: Y:						
SW Sec 30 Blk 4 X Terry Co. Center of F M road going E-W and graded road going N-S	33 19 34.283	254 58 16.4	74 59 50.6	Meadow W T	4799.17	5669.21
	102 15 26.543	357 02 21.4	177 02 19.4	Wooldridge (US)	2063.80	2437.94
COORDINATES ZONE: X: Y:						

STATION	LATITUDE LONGITUDE	AZIMUTH	BACK AZIMUTH	TO STATION	METERS SEA LEVEL	VARAS SURFACE
Meadow W T	33 20 14.645	231 50 56.9	51 53 18.1	NE Sec 2 Blk E	8431.42	9959.94
	102 12 27.313	274 13 06.3	94 18 17.2	McNabb (U S)	14674.88	17335.27
COORDINATES ZONE: X: Y:						
SW Sec 57 Blk 4 X Terry Co. Bolt in center of F M road going E-W and graded road N-S	33 19 34.674	100 32 27.7	280 30 06.9	Meadow W T	6743.56	7966.09
	102 08 10.947	180 02 13	00 02 13.1	NE Sec 2 Blk E	6437.50	7604.55
COORDINATES ZONE: X: Y:						
NE Sec 2 Blk E Terry Co. A 1 1/2" GIP set by M. E. Rags- dale in 1917 in roads going S-W.	33 23 03.632	265 00 51	85 02 51.7	Hocklynn (U S)	5689.66	6721.13
	102 08 10.786	308 11 21.1	128 14 11.2	McNabb (U S)	10179.04	12024.39
COORDINATES ZONE: X: Y:						
Gordon Hill Station 2" Steel shaft on chalky hill center Capitol F M road # 41 is South 72 ft.	33 24 21.885	106 41 23.5	286 35 51.7	Mallet (US)	16242.17	19186.69
	102 23 09.112	216 17 23.8	36 18 32.2	Smart (US)	5417.06	6399.11
COORDINATES ZONE: X: Y:						

count 13807

(Part 2)

File No. 18

TERRY County

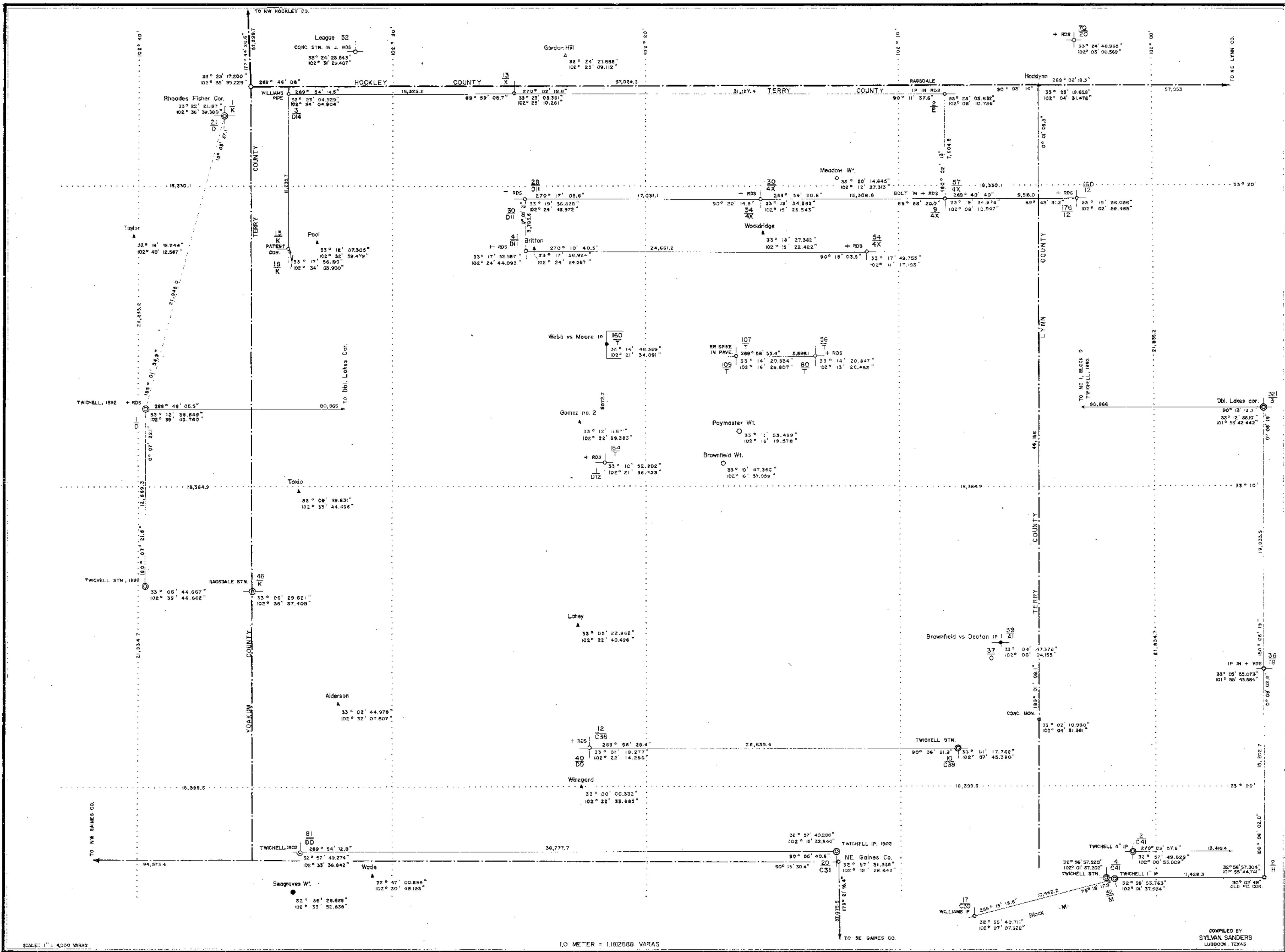
Sketch File

Filed Feb. 5 19 58

BILL ALLCORN, Com'r

By _____

counter 38044



SCALE: 1" = 4000 VARAS

1.0 METER = 1.1812588 VARAS

COMPILED BY
SYLVAN SANDERS
LUBBOCK, TEXAS