

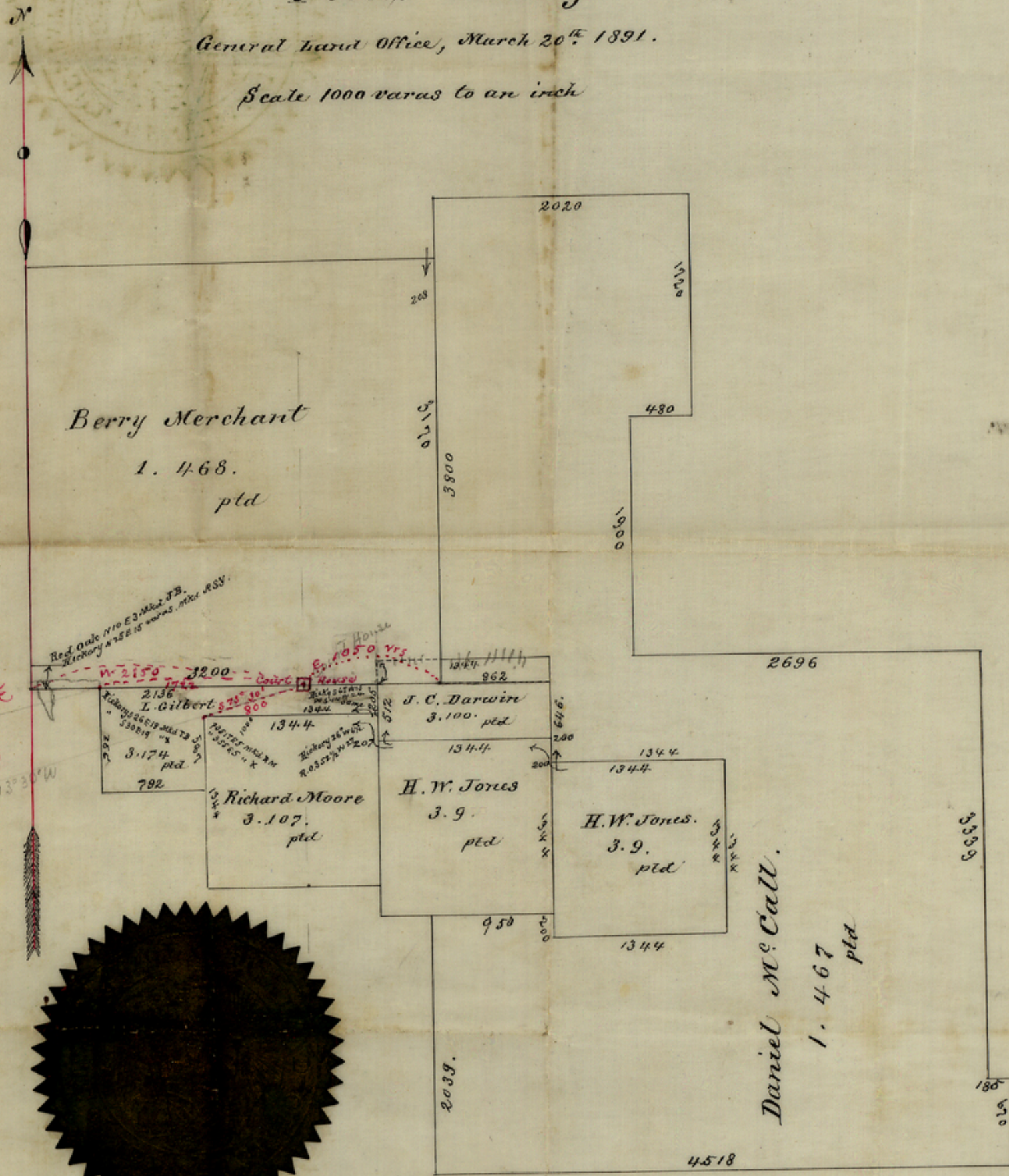
Total No 15
 Off. Wks. around the
 M Jones (3-2)

Working Sketch, made from field notes of Surveys
located in

Titus County.

General Land Office, March 20th 1891.

Scale 1000 varas to an inch



Statement in red ink
 by the Co Surveyor of
 Titus Co (S. C. Turner)
 Apr. 14th /91.



I, W. L. McGaughey, Commissioner of the General Land Office do hereby certify that the above Sketch correctly represents the relative position of the surveys thereon named as shown by data on file in this Office

In witness whereof I herewith sign my name and cause the Seal of Office to be affixed this 20th day of March A.D. 1891.

W. L. McGaughey
Commissioner of the Gen. Land Office

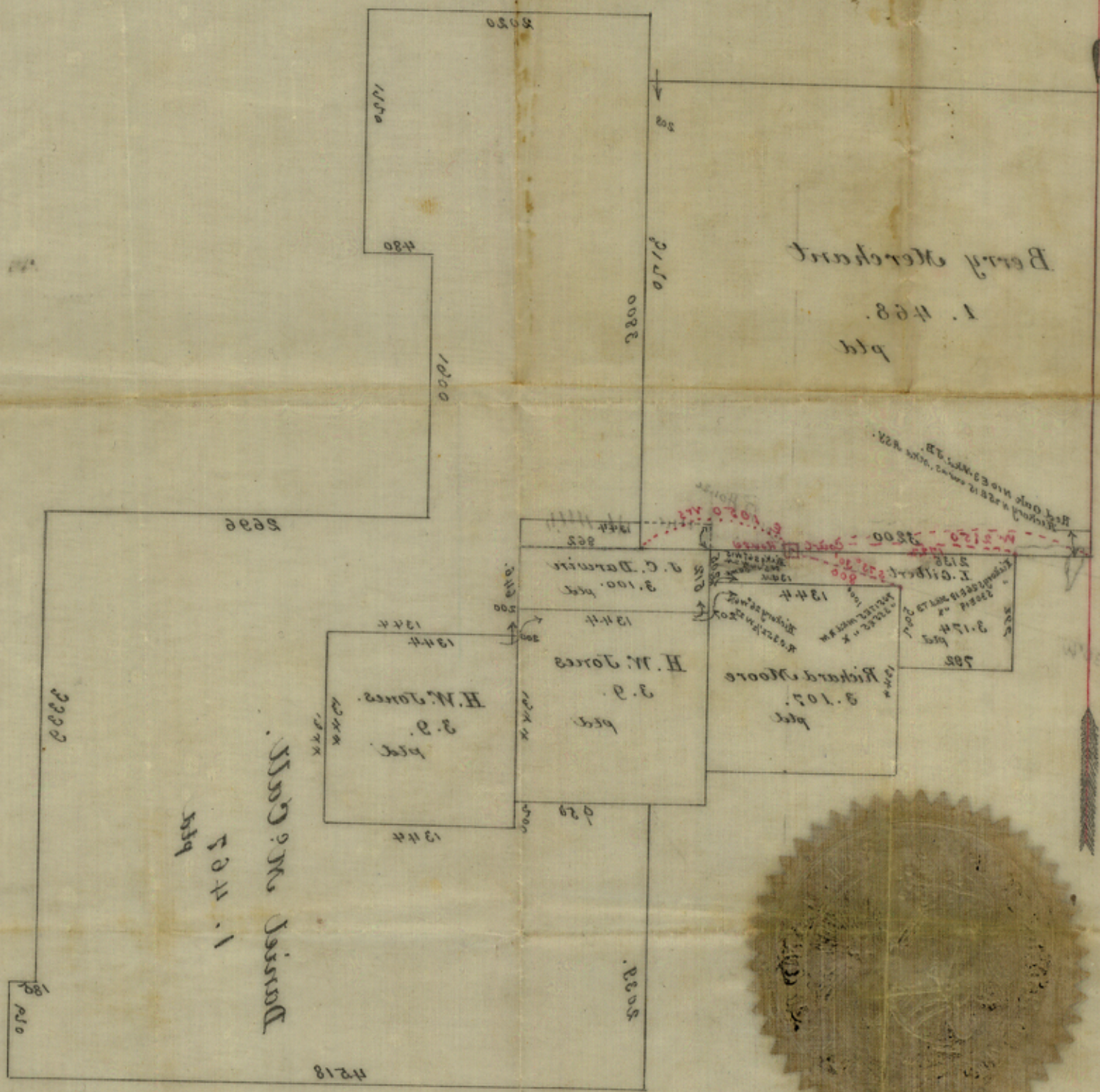
Titus Co 12
 off. WKS, around the H.
 W Jones surs (3-9)

Working sketch, made from field notes of surveys
 located in

Titus County.

General Land Office, March 20th 1891.

Scale 1000 yards to an inch



Statement in the name
 of the Co. Surveyor of
 Titus Co. (H. C. Jones)
 Wm. H. Jarvis

In witness whereof I hereto sign my name and cause the Seal of Ohio
 to be affixed this 20th day of March A.D. 1891.

W. L. McGarvey
 Commissioner of the Gen. Land Office