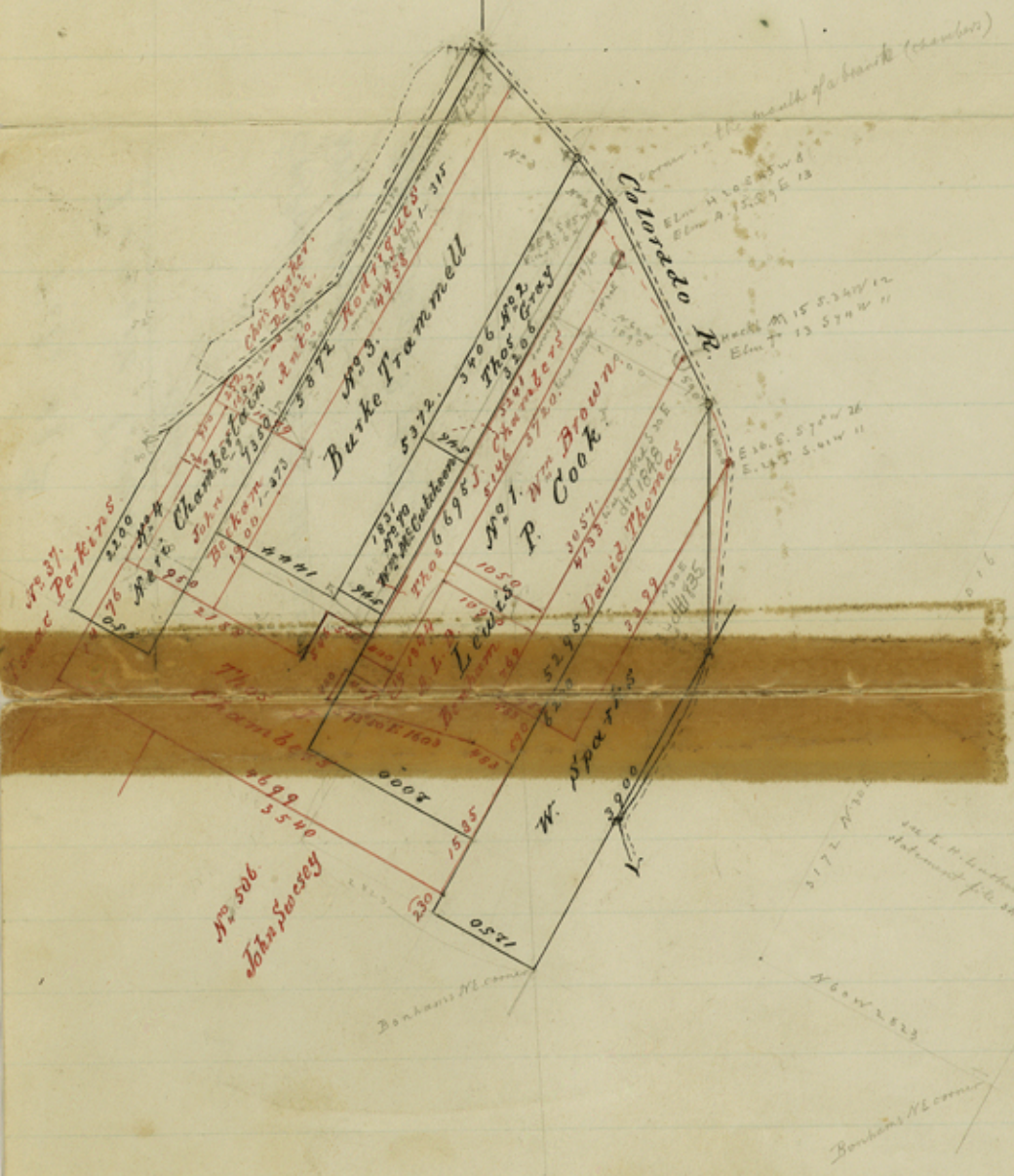




GENERAL LAND OFFICE,

Justin, Texas.

18



Plotted in Office Aug. 28/70.
C. W. Pressler.

counter 38302

SK File 11^a

Travis County.

Compiled in Office.

CW Presslers off. SK. about 6 mi
NW. of Austin.

Dated Aug. 28, 1873.

1-145

CWP 8/28/73

coenter 138303