

File No. SK File 22

Travis County

Filed Nov 1 49 1875

J. EARL RUDDER, Com'r.

By _____

about 12 mi. N. 80° W. fr.
Austin

by
Jno. E. Campbell

J. EARL RUDDER
COMMISSIONER
GENERAL LAND OFFICE
AUSTIN 14, TEXAS

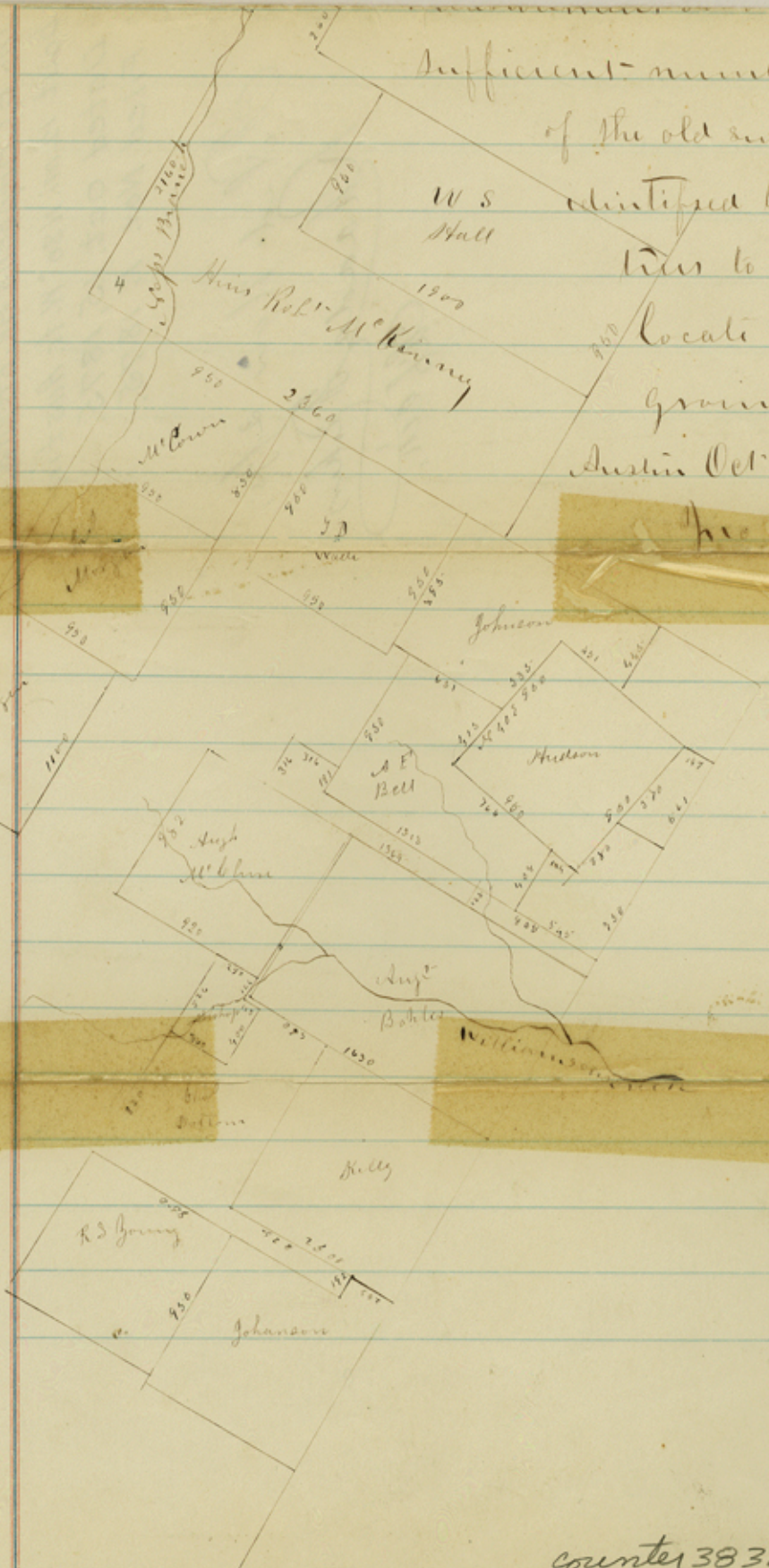
counter 38327

Sufficient number of the corners
of the old surveys being
identified by the bearing
lines to enable me to
locate them on the
ground

Austin Oct 15th 1875

Jno O Campbell

Surveyor for
Gravis County



File 22.

Lewis Co

Jno E Campbell's SK. of Surs. a-
bout 12 mi. N 80° W. fr. Austin
Dated Oct. 15, 1875.
Filed Nov. 1, 1875.

Filed Nov 2/75,
Rhaads P. P. P.
Chf. Clk.

10/15/75
Filed Novemb. 1/75

counter 138329