

TRINITY

9-

Torn, mutilated, sketches and
parts of sketches in Trinity Co.
Sundry dates, localities, etc. etc.

counter 38516

9

9

file 16.
Trinity County
filed Sept 7/71
Trinity paper

Trinity Co. Sp. File #9

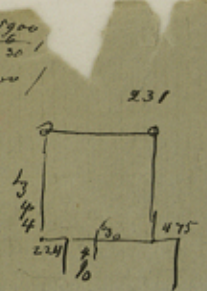
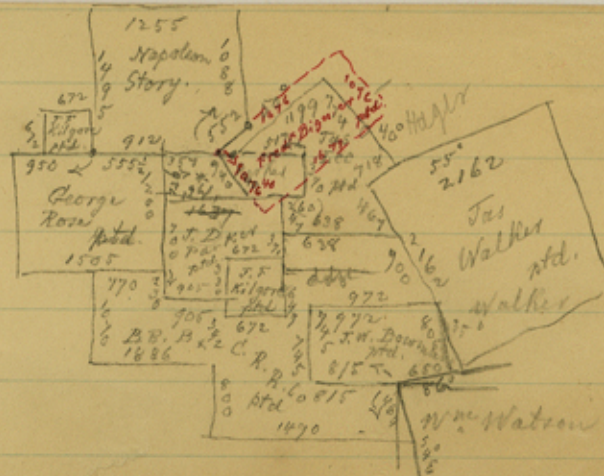
counter 38518

Trinity County
file #9
File #9

South corner of Trinity Co.

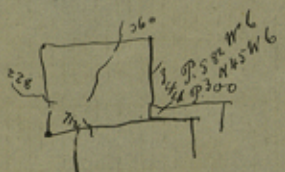
plotted in office May 27/76

Tom Klappenburg



1344
11 20
224

475
630
490
1495 1344
828
622



counter
38519

600
950
1685
3235

1827
290
2119

70. 18.00 / 25.71.
140 69 4
400 69 4
350 102.85 1

300
950
1250
186
1064
754
207

500
490
100

18
4
\$ 72.00

1114 1114
405 767
707 403 4

1114
737
357

70: 7204 / 102.85.

70
200
140
600
560
400

1083

1550
950
775
1395
1,472.50
3,235

225
600
13,500
1,472.500
1,941.000
118,750
3,667.250
3,613.50
54,210
50,805

Trinity Co. St. File

9

282

L Klappenbach 9/29/02

Trinity Co. St. File #9

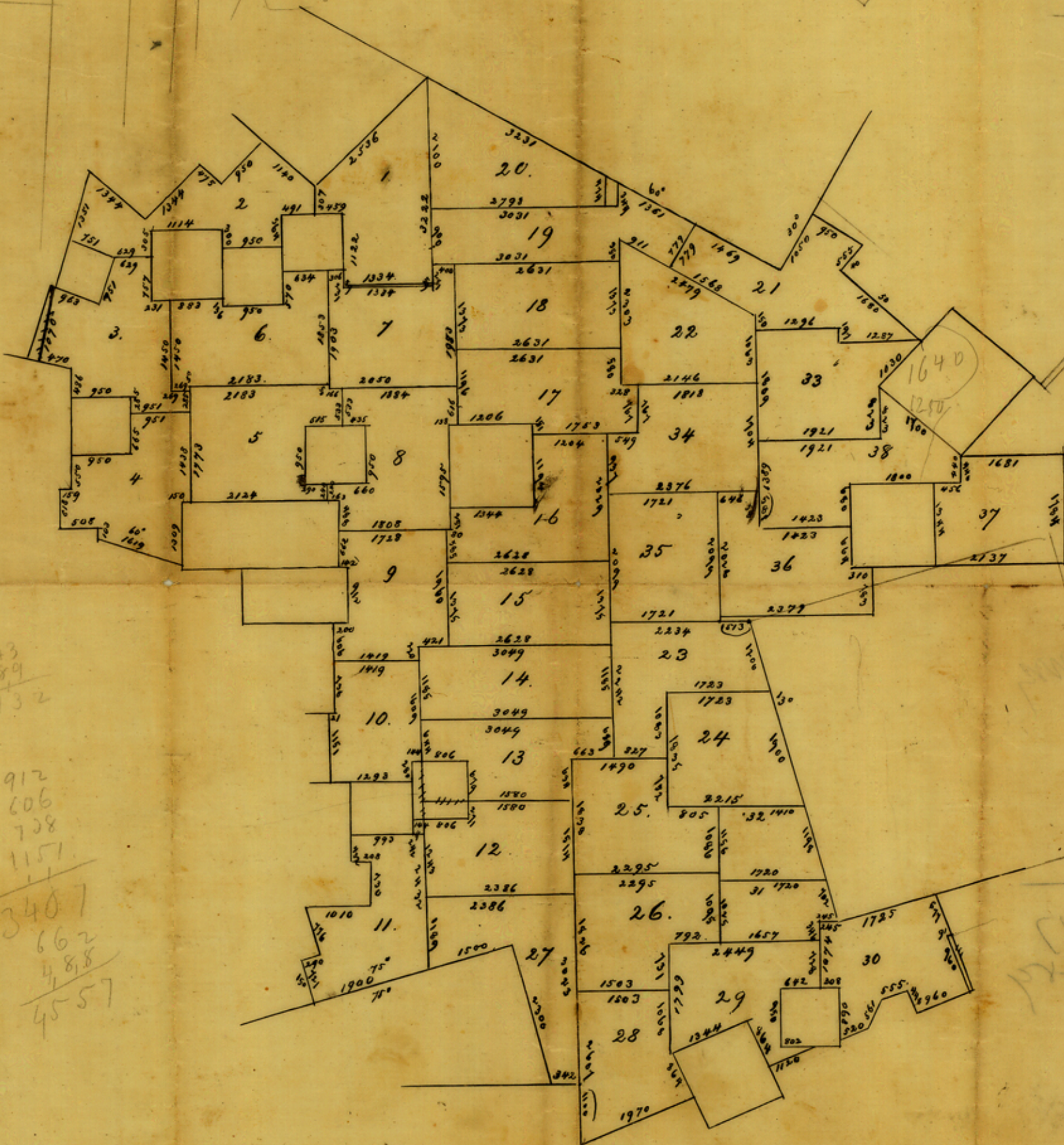
9

9 File: 152

Trinity County.

Filed Septemb. 1/68.

counter 39520



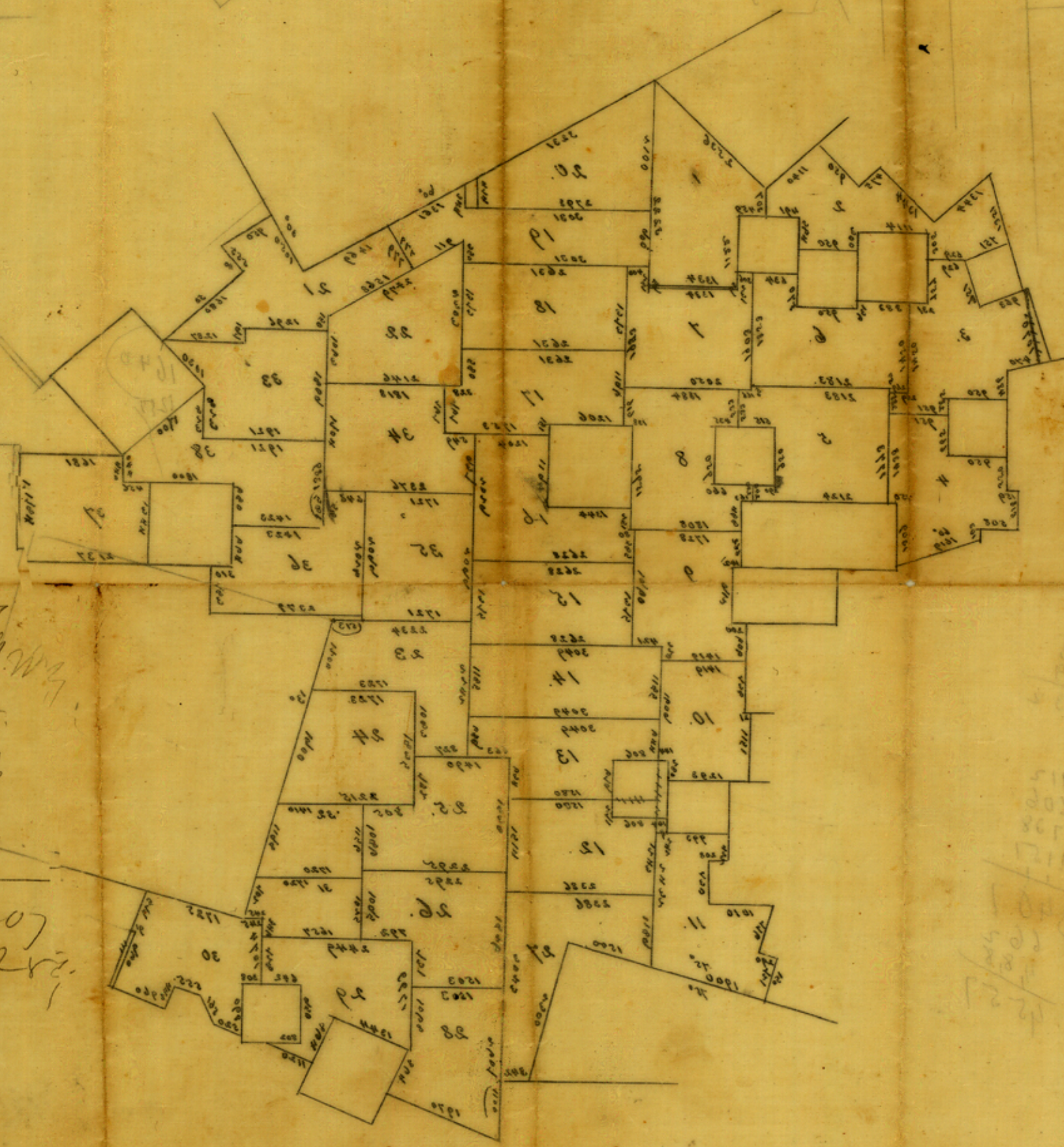
1243
1189
2432

912
606
728
1151
3407
662
488
4557

1564
21
2479

1921
2376
663
960

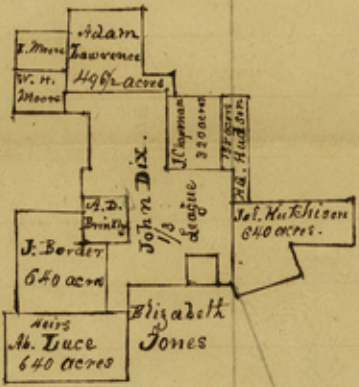
1001-8
15-5
180-2
15-5



5-227
 3-1299
 2-175
 5-286
 2-29

5-207
 3-1282
 94

1177
 1178
 1179
 1180
 1181
 1182
 1183
 1184
 1185
 1186
 1187
 1188
 1189
 1190
 1191
 1192
 1193
 1194
 1195
 1196
 1197
 1198
 1199
 1200



[Faint, illegible handwritten text, possibly bleed-through from the reverse side of the page.]

counter 38524

Sketches of 9

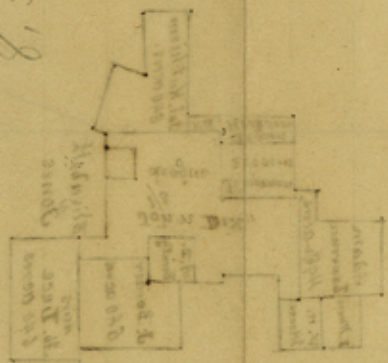
John Dix

H. G. Hudson

Jos. Hutchison

Atlan Lawrence

8,333,333



1289
2-299 899

1880

Hrs of
M. Dooley

1344
1500

B. B B 85
C. R R
Co
S-182

F. W
Coff

1164
700
1189
J. 579

1505
950
530

1248
961
1736

1284
903

I. W
White

1648
N 55 E

Chapman

Hughman

C
Larginos

803

S. Webb

S 35 E
1840
N 6

611

588

803

I. G. N.

R R Co
S. 494

J. Hutcheson

1142

224

2409

1270

2340

2494

1656

1893

135

1375

counter 38526