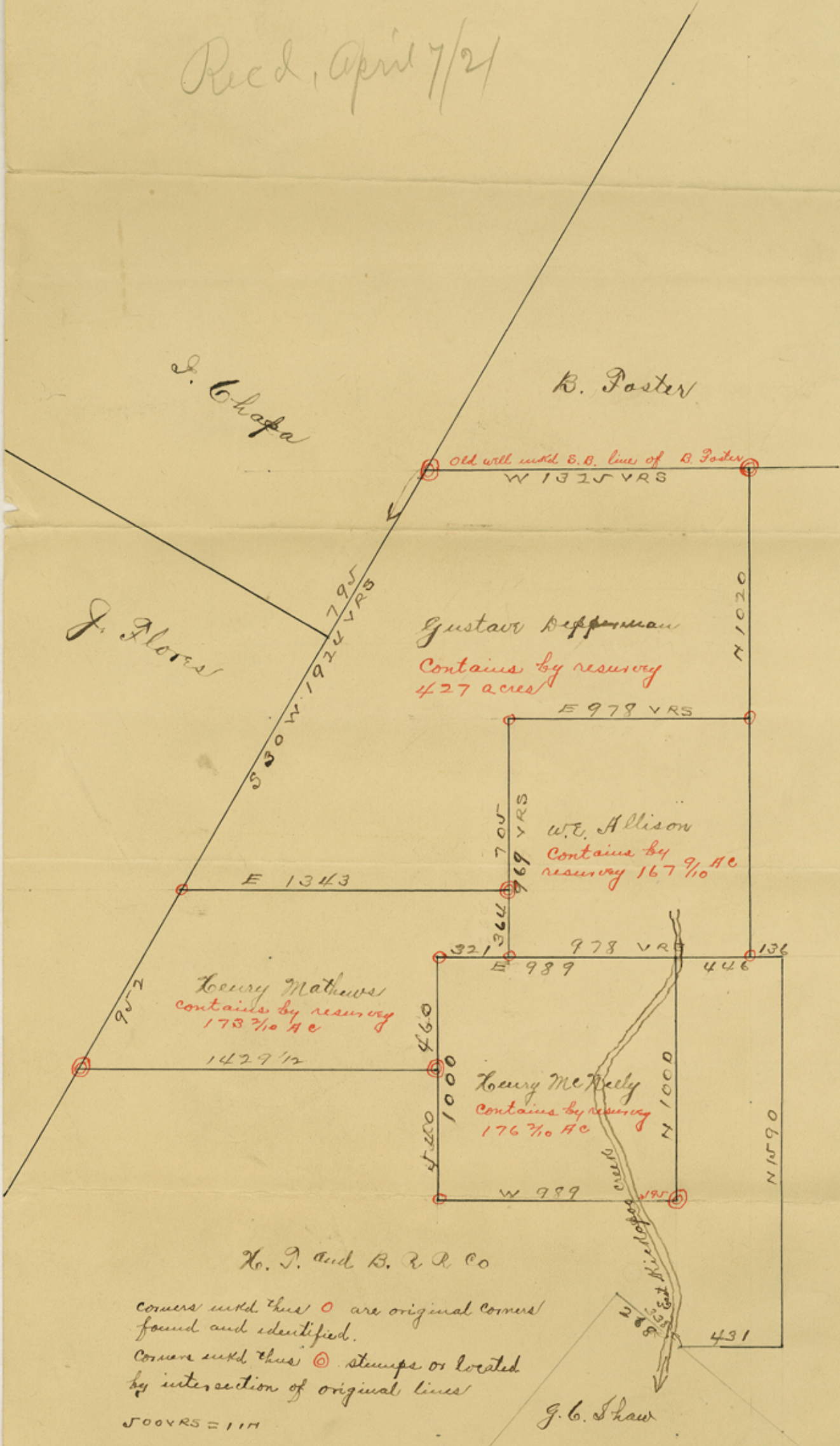


Recd, April 7/21



THE STATE OF TEXAS) I, J. M. O'Neill, County Surveyor of Trinity
 COUNTY OF TRINITY.) County, Texas, do hereby certify that the above and
 foregoing sketch or map of the ^{SE} G. Depperman, W.E. Allison, H. McNelly surveys situated
 about 6 miles from Groveton, is a true and correct map of said survey,
 correctly showing courses and distances, of the lines of the same, and the
 surrounding or adjacent surveys of the same, compiled from a re-survey on
 the ground. Witness my hand this the 5th day of April, 1921.

counter 38587

J. M. O'Neill
County Surveyor, Trinity County, Texas.

Sketch 35^a

TRINITY COUNTY,

Filed April 7th 1921

J. N. Robison, Com-
S. C. Clark

Dated April 5, 1921^{clk.}

6 miles S. E.

See 34^a

see sketch in
Hoos-5-405

counter 38588



COUNTY OF TRINITY, TEXAS

Commissioner of Survey, Trinity County, Texas

John N. Robison, Surveyor

Sketch of a portion of the land surveyed by me on the 25th day of April, 1921, showing the location of the same, as surveyed on the 25th day of April, 1921, and the location of the same, as surveyed on the 25th day of April, 1921, and the location of the same, as surveyed on the 25th day of April, 1921.