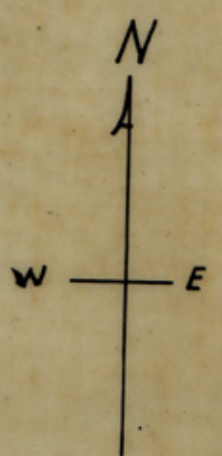
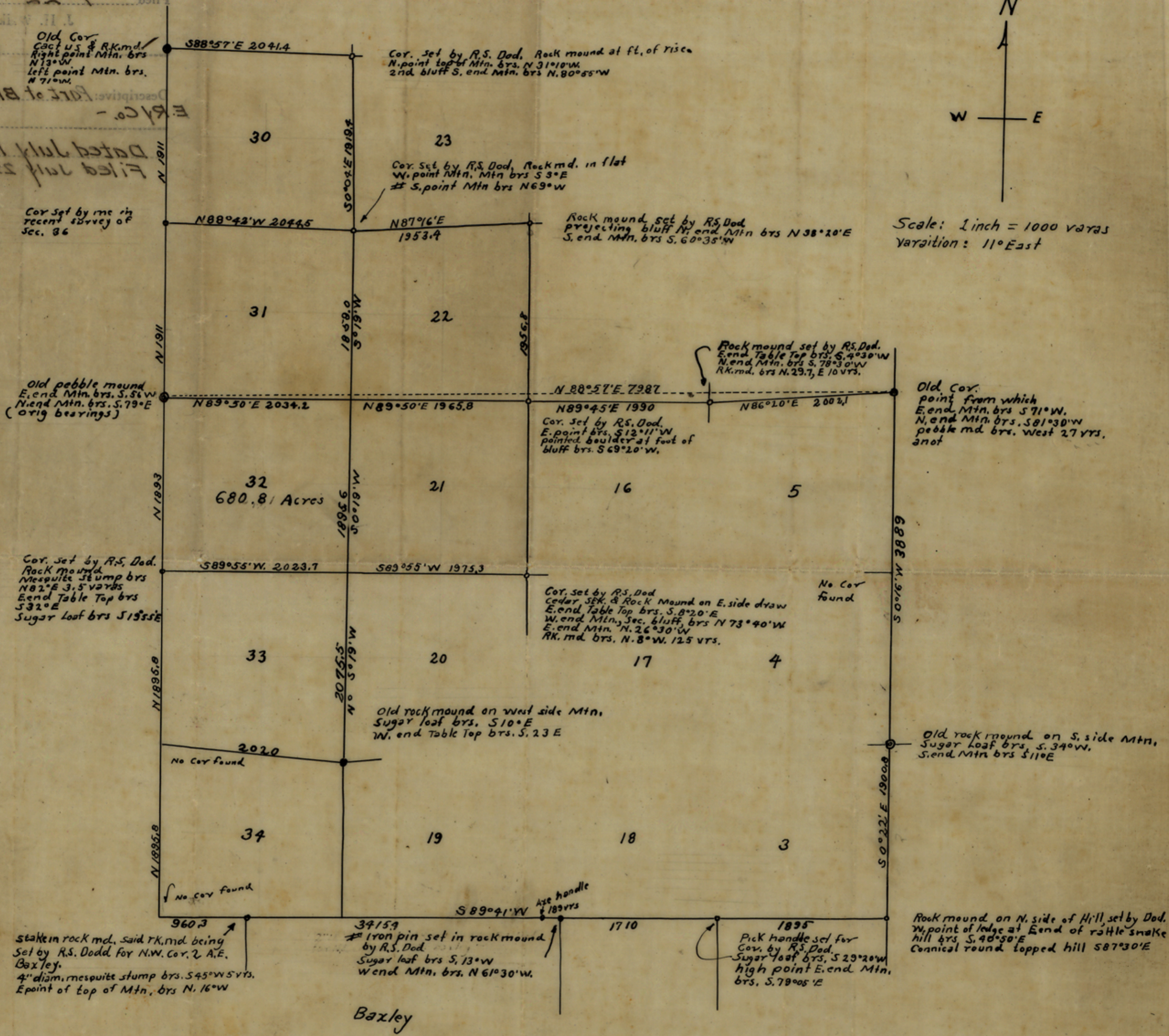


Sketch File No. 29
 Upton County
 J. Silas Pittman
 Filed 7-22-1935
 J. H. W. Clerk
 Old Cor. Cact. U.S. & R.K. md. Right point Mtn. brs. N 71° 10' W. Left point Mtn. brs. N 71° 10' W.

Dated July 18, 1935
 Filed July 22, 1935



Scale: 1 inch = 1000 varas
 Variation: 11° East



stake in rock md. said rk. md. being set by R.S. Dodd for N.W. Cor. 2 A.E. Baxley. 4" diam. mesquite stump brs. S45°W 5 vrs. E point of top of Mtn. brs N. 16°W

34159 Iron pin set in rock mound by R.S. Dod. Sugar loaf brs S. 73°W. W. end Mtn. brs. N 61°30'W.

1895 Pick handle set for Cor. by R.S. Dod. Sugar loaf brs. S 29°20'W. high point E. end Mtn. brs. S. 78°05' E

Rock mound on N. side of Hill set by Dod. W. point of ledge at E. end of rattle snake hill brs. S. 40°50' E. Conical round topped hill S 87°30' E

Plat of a resurvey of Sec. 32
 Block 1, M.K. & T.E. RR. Co. Upton Co. Tex.
 Made from actual survey, June & July, 1935.
 by J. Silas Pittman, Co. Surveyor.

I, J. Silas Pittman, County Surveyor of Upton County Tex., do hereby certify that this plat of a resurvey of section 32 and other sections in Block 1, M.K. & T.E. RR. Co. Upton Co. Texas is correct, and that corners, lines and distances are plotted as found by me on the ground by actual survey made June 1st and July 10th & 11th, 1935.

Rankin Tex
 July 18, 1935

J. Silas Pittman
 County Surveyor, Upton Co.

B1

counter 38881

counter 38881

Sketch File No. 29

Upton County

J. Silas Pittman

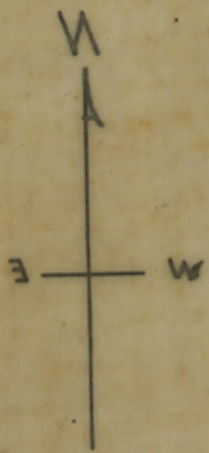
Filed 7-22 1935

J. H. Walker, Comm.

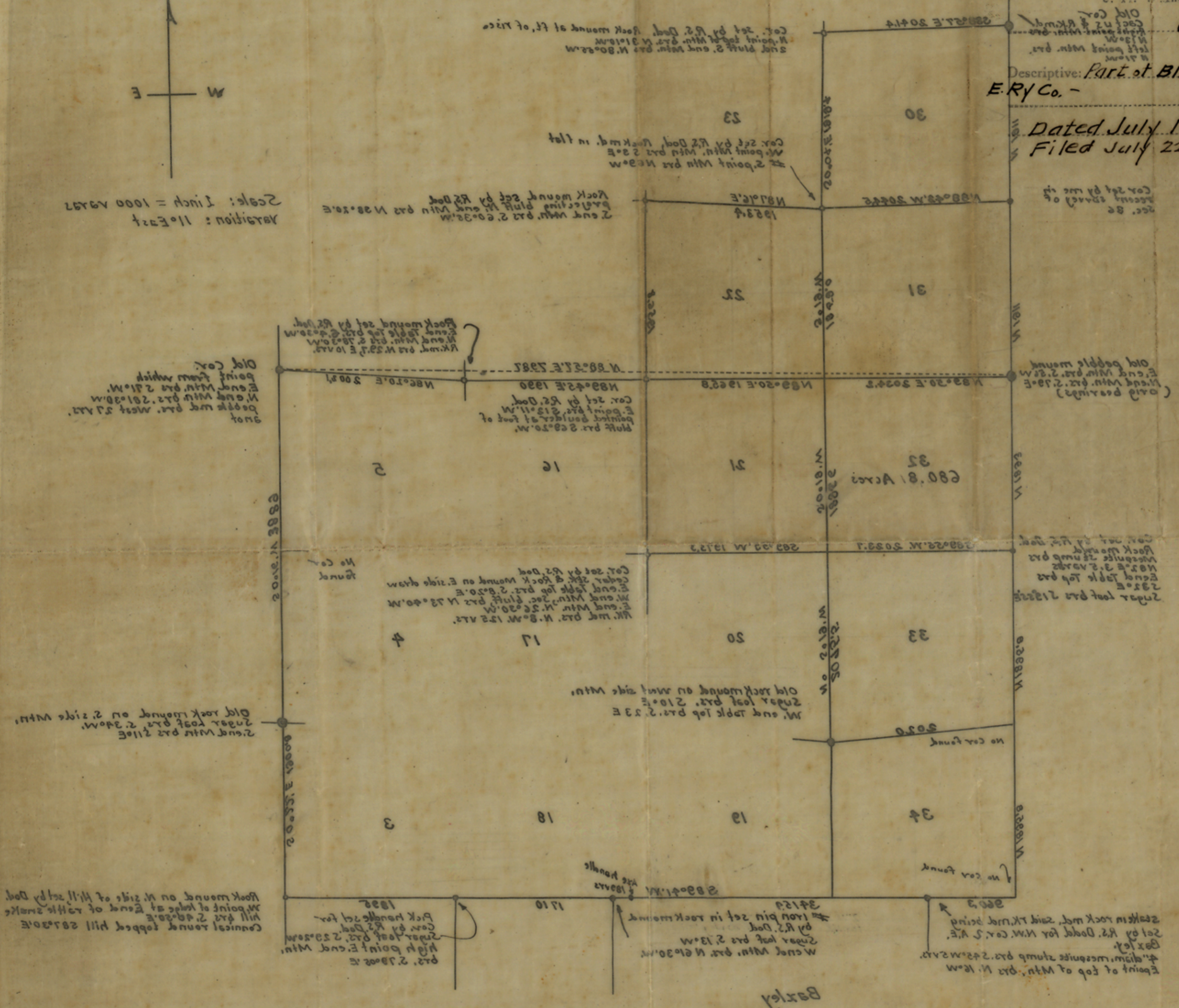
Giles
Fin. Clerk

Descriptive: Part of BIK 1, MK&T
E.R.Y. Co. -

Dated July 18, 1935
Filed July 22, 1935



Variation: 11° East
Scale: 1 inch = 1000 feet



July 18, 1935
County Surveyor, Upton Co.
J. Silas Pittman

Plot of a survey of Sec. 35
Block 1 M.K. & T.E.R.R. Co. Upton Co. Tex.
Made from actual survey, June & July, 1935.
by J. Silas Pittman, Co. Surveyor.

81

118

counter 38881

counter 38882