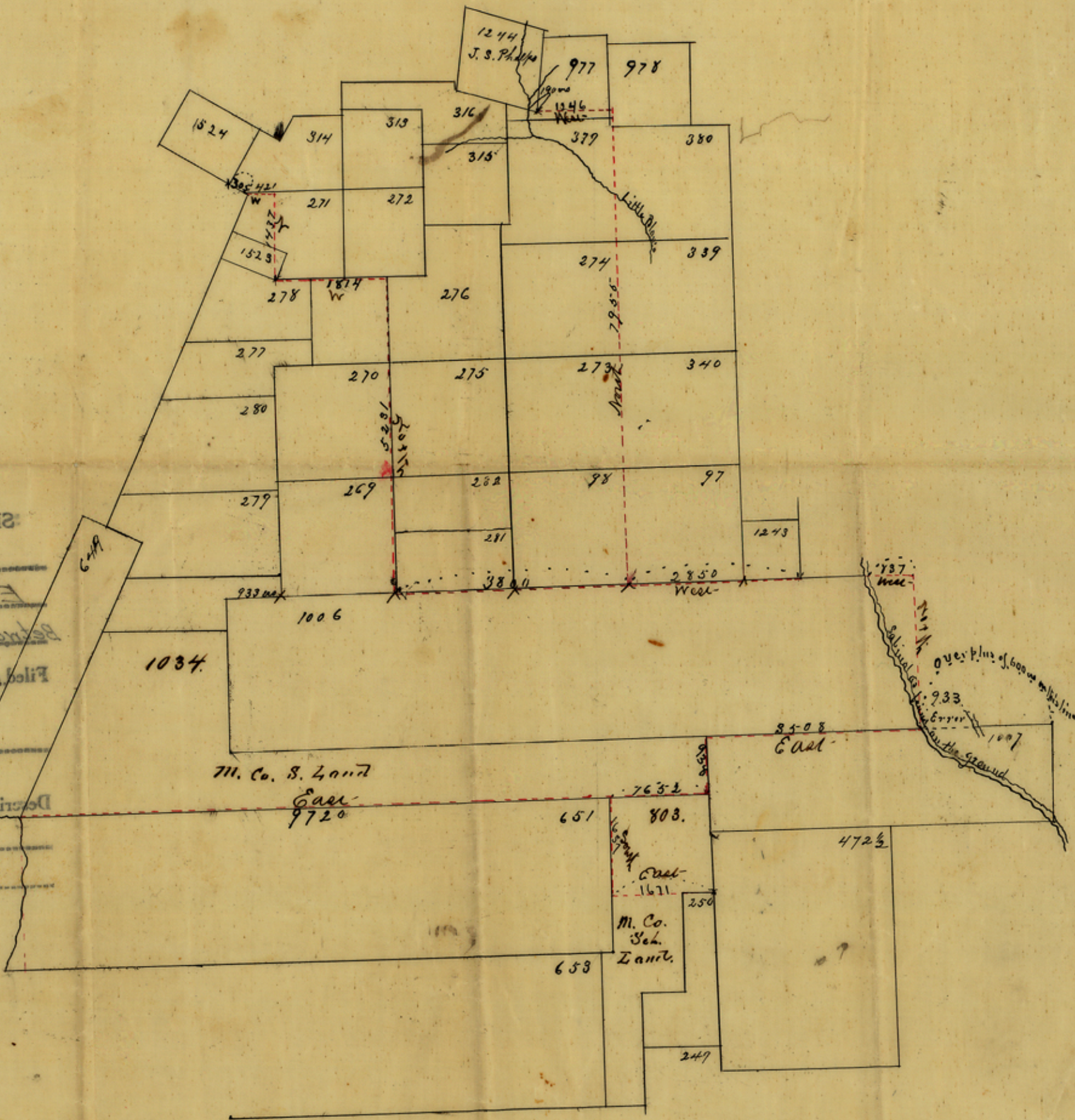


Handwritten signature and date:
 Wm. G. ...
 1882

Sketch File No. 20
 County
 F. B. Chandler
 Between the Rio Grande
 Filed Oct 2nd 1882
 J. H. Walker
 File Clerk



Sketch

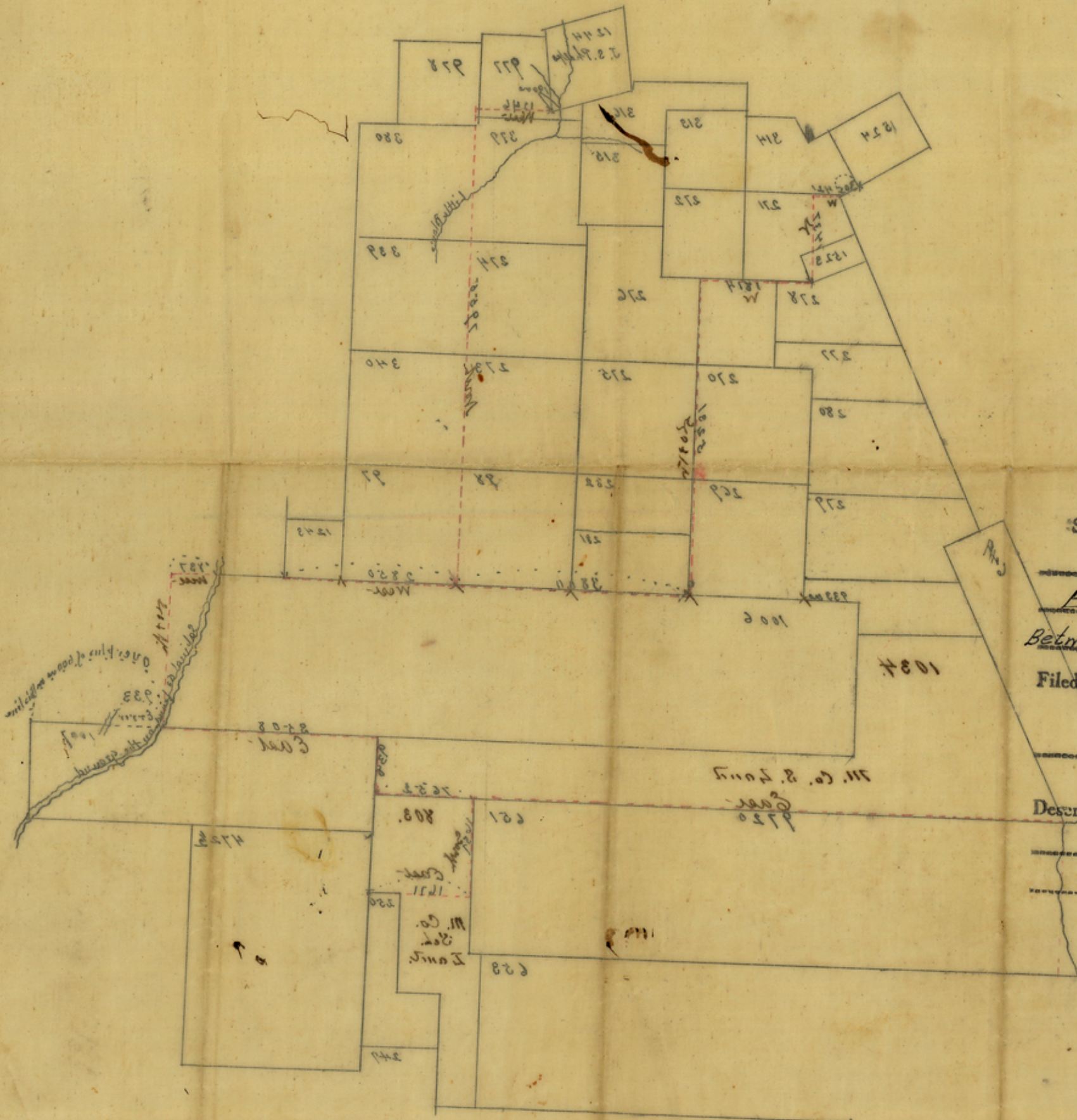
Showing position of Survey between the Sobino & Trip Rivers on the waters of Blanes Creek as found on the ground

Wade Tex Sep. 21st 1882
 E. B. Chandler
 Co. Surveyor Verde Co.

Handwritten signature:
 J. H. Walker

Counter 39002

*Filed
Oct. 2/82.
J. H. Walker
County Clerk*



Sketch File No. 20
 Uvalde County
 E. B. Chandler Sketch
 Between the Frio & Sabinal R's
 Filed Oct. 2nd, 1882
 J. H. Walker, Comin.
 File Clerk

Descriptive:

*counter 39003
 Room for Sep. 21st 1882
 J. H. Walker
 County Clerk*

*Sketch
 The surveying of boundary between the Sabinal
 River and the Frio River
 J. H. Walker
 County Clerk*

counter 39003