

"A4"

JH Brauers SKs. & Connecting L<sup>ns</sup>

in Val Verde Co

Dated May 1, 1897.

Filed May 3, 1897.

5

counter 39076



10/2  
100  
120  
5

Del Rio, Texas, May 1<sup>st</sup> 1897

Hon. Andrew J. Baker  
Com<sup>r</sup>, Gen'l Land Office, Austin, Texas

Herewith I send you Plat of lines run by me  
at different times, in this, Val Verde County.

- 1<sup>st</sup>) From S.E. cor. 83, NE cor. 82, Block N, G.H. & S.A.R.R.Co., North 29584 vrs  
& West 2394 vrs (Var 9°35'E) to N.E. cor. S<sub>y</sub> 24 Blk A4, G.H. & S.A.R.R.Co.  
(corner 10<sup>th</sup> East of Prossers fence.)
- 2<sup>nd</sup>) From NE cor. 24 Blk A4. West 3741 varas (Var. 9°15'E to NW cor.  
25, S.E. cor. 35, Blk A4. G.H. & S.A.R.R.Co.
- 3<sup>rd</sup>) From NW cor 25, S.E. cor 35, Blk A4. West 1852 & North 3790  
(Var 9°35'E) to N.W cor 36, NE. cor 37 Blk A4. G.H. & S.A.R.R.Co.
- 4<sup>th</sup>) From NW cor 36, NE cor 37 Bl. A4. West 1644 varas & North  
7536 varas (Var 9°35'E) to N.E cor 8, Blk DB, & NW cor. 13,  
N.R. Crow Survey. these lines I ran in May, 1893

The East line of Surveys Nos 7, 6, 5, 2 & 1 in Block DB run by Var.  
9°30'E. and are overmeasured about 20 varas per mile.

The North line of Surv. 1 Blk DB, course Var 9°5'E.

- " " " " " 16 " " " " 9°18'E 1922 varas
- " " " " " 17 " " " " 9°20'E 1925 "
- " " " " " 32 " " " " 9°35'E 1960 "
- " West " " 32 & 31 " " S. Var 9°35'E each 1925 vrs.

I followed these lines in August 1895.

From NW. cor 16, NE cor 17 Blk DB. North 22097 varas, &  
East 3422 varas, Var 9°40'E, to SW cor 16, SE cor 17. Block O  
G.H. & S.A. RR Co. ; run in May 1893.

From S.W cor S<sub>y</sub> 160 1<sup>st</sup> G. N. RR Co. (Beaver Lake) I ran  
South 1900 vrs. West 9580 vrs, North at 2305 vrs found  
S.E. cor 1, N.E. cor 2, Mason Co. School Land, the Cedar bearing trees  
all standing yet, in all North 13953 varas to South line  
S<sub>y</sub> 11 Blk O, G.H. & S.A. RR Co. — Thence East 2728 varas to S.E.  
cor. S<sub>y</sub> 10, S.W cor. 9 Blk O. (Var 9°35'E April 1897.)



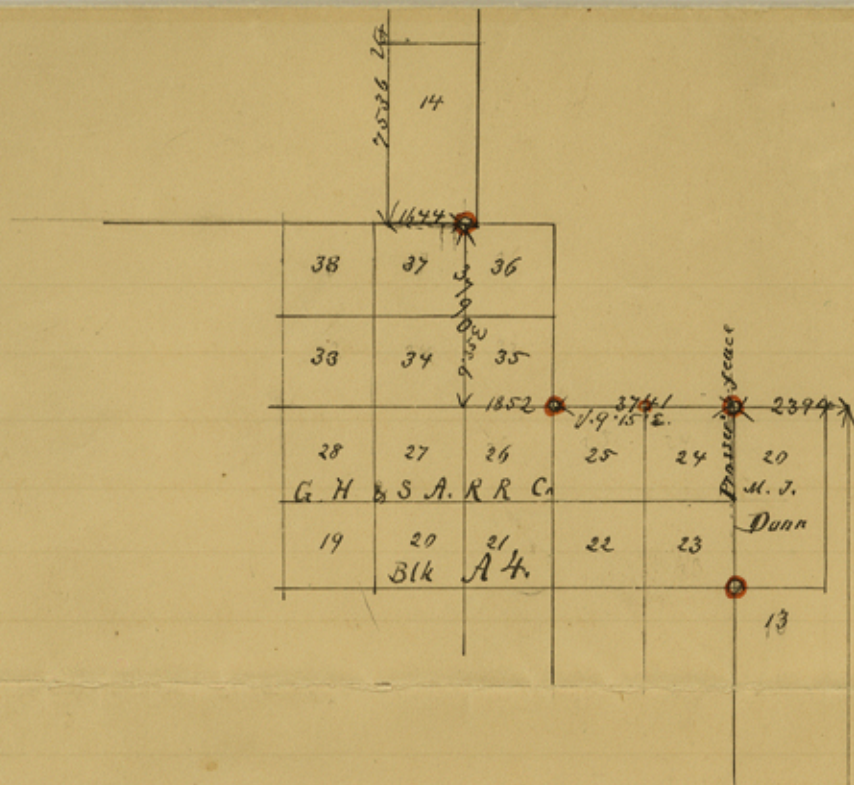
On the old map of Val Verde County I find  
North of Block A4. G.H. & S.A. RR Co. the D.H. Wilkes Sy 11 & 12  
& the Geo. Ruiz & Perry Brown Survey, I find no land  
left to make them on. South of Block D.B, the Surveys 15  
W. Morris & 16 S.C. Craig will include all up to Block A4.

On the I. G. N. RR Co Surveys, at Pecan Springs, I do  
not know any corners, In passing on the road up  
Devils river, I looked for the S.E cor 14, SW 15 I.G.N. RR Co.  
but could not find it, I think it is destroyed, I am  
sorry I can give you not the desired information.

yours respectfully

J. H. Brauer  
Co Surv. U. V. Co





35584 7 Jan 9.35 E  
 29584 7 Jan 9.35 E  
 900 in. May 1893.



corners found of Williams' mhd orange  
 corners found of Bonnell's "green"

Connection lines in Val Verde County  
 scale 4000 varas = 1 inch  
 J. H. Brauer, Co. Surveyor.



SK. A-4

Val Verde Sketch

Files in

Filed in the Land  
Office May 3<sup>rd</sup>  
1897

Chief Clerk

J.H. Brauer's Connecting  
Lines in Val Verde Co.

### Crockett County

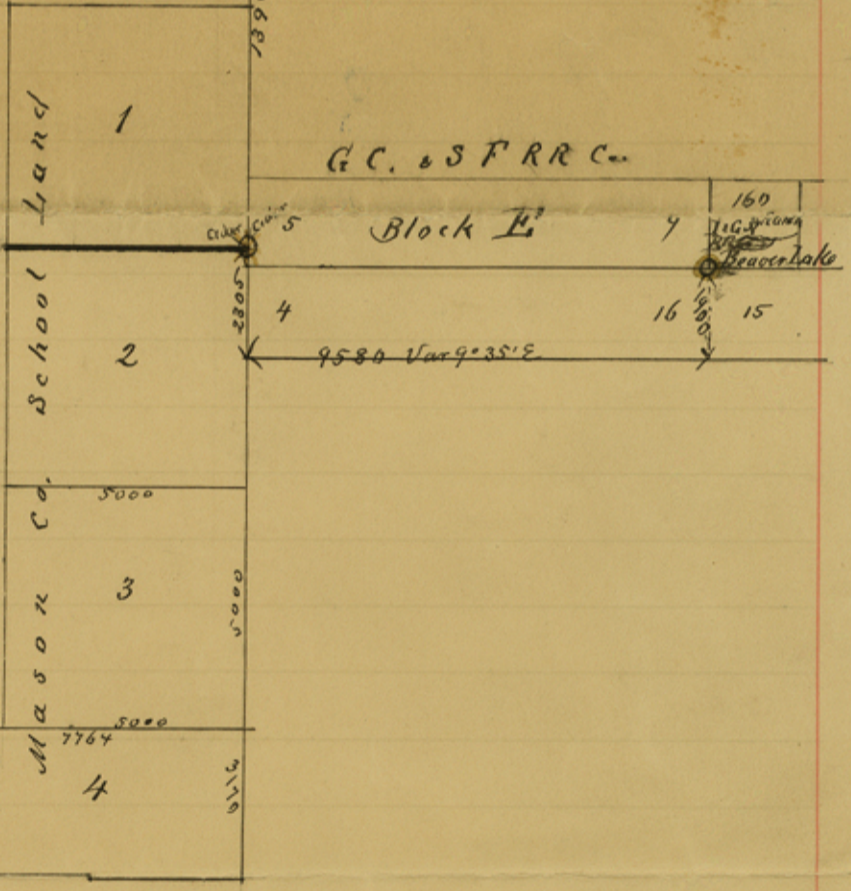
24	25	26	27	28	29	30	31	32	33	34
G. H. & S. A. R. R. Co.						Block				
17	16	15	14	13	12	11	10	9	8	7

3422 varas  
14069 varas

1925 1947  
2728 var.

North 22°09' E Varas  
Var 9°40' E. Jan 1893 in May

18983 Var 9°35' E



G.C. & S.F.R.R. Co.  
Block B

Mason Co. School Land

Block DB

32	17	16	1	4
31	18	15	2	5
30	19	14	3	6
29	20	13	4	7
28	21	12	5	8
27	22	11	6	9
26	23	10	7	10
25	24	9	8	13

counter 139050