

D.D. & DD1

Geo M Williams & Jacob Kuechlers
Sketches of Surs, in BIKs, E.F. & H.

Dated Nov. 4. 1902

Val Verde

counter 39067

The State of Texas) Field Notes
County of Val Verde) of connecting
Lines between the
SW. cor. of Sur. 160 I and G. N.
R.R. Co. (on which Beaver Lake is
situated) and Block G. - Gulf.
West Tex and Pacific R.R. Co. and
Block O. G. H. and S. A. R.R. Co.
lying on the N. Line of Val Verde
County

Beginning at a stone md. on
the E. side of a hill about 150
vs West of a drain in a hollow
the same being the SW. cor. of Sur.
160 I and G. N. Ry Co. whence a cedar
10 br N 59 1/2 E 150 vs a cedar 10 br S 30 W
105 vs. both marked

Thence North at 560 vs crosses the
dry Bed of Devils River in all
1000 vs. Thence East up the
Valley in Devils River Canon, 7600
vs. Thence N 50 E 2800 vs. Thence
North 996 vs. Thence N 61 E 270 vs.
to the original N. E. cor. of Sur. 25
Block O. G. H. & S. A. Ry Co. the same
being one of the old. Dallas and
Wichita R.R. Co.'s corner of Block
O. whence a Hackberry 6 br N 5 E 18 vs

a do 8
1-99 # 211
VH Verde Co. SF

br N 14 1/2 W 35 v^s both marked, a wild
China Stump br N 71 E 51 v^s,
Thence N 45 E 53 76 v^s. Thence North
2347 3/4 v^s. Thence East 449 1/2 v^s. to the
S.E. Cor. of Suv. 1. Block G. Gulf West
Tex. and Pacific Ry. Co. and the N.E.
Cor. of Suv. 60. Block E. G. C. and
S.P. Ry Co. whence a Mesq. 12" (one prong
burned off) br S 44 E 21 v^s. a do. 12"
br S 8 1/3 W 145 3/4 v^s. both trees marked,
Built at St. Md. for the said corner.
and capped it with a stone mkd SE 1
the said Cor. is situated at the foot
of a hill (at the N. edge) of a flat
and is 860 v^s N. of the Bed of
Devils River. Thence West 1021 v^s.

Thence N 21 1/4 v^s to an old stone Md.
in flat and near the West foot of a Hill
the same being the original Monument on
the N. Line of Suv. 1. whence a Mes 8" br N 45 W
5-4 v^s ^{mkd 7} a clump of small Mes. sprouts from a stump
br N 35 W 63 v^s. Thence North 210 4 1/2 v^s.

Thence East 2035 v^s to a Wild China Tree
mkd 7 standing near E. Bank of Devils River
whence a dead forked Hackberry 8" br S 26 W 20 1/2
v^s a Hackberry stump br S 24 W 21 v^s. Thence
N 0 41 E 1990 v^s. to a stone mkd A. by a

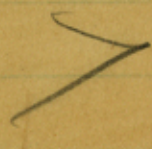
B'

8" Mes. whence a Hack by 8" br S 45 E 15 v^e. a
 do. 7" br S 35 E 14 1/2 v^e. both m^{kd} x. the said stone
 is near the E. Bank of Devils River and is
 at the Men. called for in original field
 Notes. Thence North 2030 1/2 v^e to point
 in Men. flat. Thence East 932 v^e to a
 old St. Md. on the W. side of a hill
 at the original N.W. cor. of Sec 10. Bl. G.
 whence a L.O. 10" br S 77 W 380 v^e a Double L.O.
 6 & 10 br S 73 W 368 ^{both m^{kd} x} v^e. Thence N 0 23 W
 2165 v^e to an old St. Md. at the original
 N.E. cor. of Sec 14 Bl. G. whence a L.O. 36"
 m^{kd} x br N 6 W 763 v^e a Men. 4" br N 55 1/2 E 64
 v^e. Thence North. at 450 v^e crosses the
 Drain of Mr. Carrell Draw. in all 1990 v^e
 to an old St. Md. in flat at the original
 N.W. cor. of Sec 16 Bl. G. whence a Dead
 Mes. 4" br S 78 E 12 v^e a fld. Mes. 6" br N 8 1/2 E 250 1/2
 v^e m^{kd} x. Thence N 1/2 W 2117 v^e to an
 old St. Md. in Dry Bed of Devils River at
 the original N.E. cor. of Sec 20. Bl. G. the
 of the original bearing trees were found.
 Thence North. 2102 v^e to an old St. Md. at
 the original N.W. cor. of Sec 22. Bl. G.
 at the E. edge of flat of Devils River whence
 a L.O. 14" m^{kd} x br S 6 1/2 E 270 v^e a Mes. 10" br.
 S 36 1/2 W 115 1/5 v^e Thence N 45 W 2946 v^e.
 Thence W 25 v^e to a St. Md. at the

1-00
41
VPI VERDE CO.

original N.W. cor. of Sur 25 Blk. G. whence
a L.O. 9' lvs N 10 3/4 W 178 v^e a 208' lvs N 15 W 180 v^e
both mcd 7/8. built up the said mcd and
capped it - with stone mcd N E 20'.

For connection with Block. O. - Beginning
at the Wild China Tree on the N. Line
of Sur. 5. ^{Block G.} mentioned in the foregoing notes
thence West 1050 v^e. to a St. Md. mcd.
N W 5' on the S. side of a Hill. the
same being the N.W. cor. of Sur. 5. at 3080
v^e. a St. Md. in a flat mcd. N.W. 6 for the N.W.
cor. of Sur. 6. Bl. G. in all 5060 v^e. to a
point. Thence South 33 1/2 v^e. to a St.



Md. mcd. N.E. 1. in a Drain the same being
the N.W. cor. of Sur. No 1. Block. O. E.H. & S.
A.R.R. Co. whence a L.O. 6' lvs S 52 1/2 W 67 1/2 v^e

a L.O. 4' lvs N 64 1/2 W 35 3/4 v^e. Thence West
17100 v^e. to the original N.W. cor. of Sur.
9 Bl. O. a Large St. Md. situated on
the E. side of the old El. Pass and
San Antonio Road. built up the said St. Md.

and capped it - with stone mcd (N.W. 9.) whence
(Blk O)
a Cedar stump 4' in clump of small Cedar
sprouts lvs N 7 1/2 W 75 v^e. Thence West
at 1520 v^e a Drain in all 1947 v^e to a Large St. Md.

at the original N.W. cor. of Sur 10. Thence West
at 340 v^e a Drain in all 1929 v^e to a Large St.

Md. at original N.W. cor. of Sur 11. and on
the West Bank of small Drain

B³

Thence West 1900 v^s. to a fall on 4 Prouyed L.O.
 with 2 Loose ^{flat} Rocks lying by the Roots.
 This tree I take to be the one called for
 in original field notes as being the N.W. cor.
 of Sur 12. Bl. O. ^{the bark was burned off the tree & no marks show} Thence West 1900 v^s to an
 old St. Md. Thence West 1900 v^s to an
 old St. Md. I failed to find any further
 trace of the original work, as the
 Country became very rough
 further West I take it - that - they stopped
 at the last Md. Connections with the
 Monuments on the N. Line of Val.

Verde Co. From the N.E. cor. of Sur.
 8 Block G. - G.W.P. & P.R.R. Co. the 14th
 Mile Monument b^s 1257 v^s South and 149 v^s.
 East. From the N.W. cor. of Sur 9. Bl.
 O. G. H. and S.A. R.R. Co. the 26th Mile Mon.
 b^s N 1200 v^s. and W 337 v^s. - from the
 N.W. cor. of Sur 15 Bl. O. the 32nd Mile Monument
 b^s N 1232 v^s and West 494³/₄ v^s. - from the
 N.W. cor. of Sur 20 Bl. O. the 37th Mile Monument
 b^s N 1587 v^s and West 990 v^s.

Connection of N.W. cor. of Sur 180.
 Bl. O. G. H. & S.A. R.R. Co. with the
 N.E. cor. of Sur 44. Block A. P. C. Ry.
 Co. - Beginning at a St Md. m^d.
 NW 180 Bl O. erected by me at

B⁴
 counter 39072
 point 15-200 v^s West and 15-200 v^s N of.

100
ST. FILE
DO

the fallen 4 Pronged L.O. at the NW⁶
Cor. of Sur. 12. Block O; for the NW
Cor. of Sur 180 Bl. O. whence a Cedar
5" brs S 60¹/₂ W 67¹/₂ V². a fixed Rock marked
brs S 76¹/₄ E 9¹/₂ V². Thence North 3828 V².
Thence East 282 V² to a small St. Md.

near the N.E. Bank of a Dry Branch.
Course S. E. whence a Cedar 12"
mkd V brs N 88¹/₂ W 210 V². a Do. 10" mkd
V brs N 88¹/₂ W 302¹/₂ V². both trees plainly
marked, I erected a Large St. Md on.

the small end and mkd it - N.E. 44
BK A T.C. Ry. I could not find any of
the corners of Block A. of that part
in conflict with Block O.

The connections with the Monuments on the
County Line show that Line to be very
excessive in measurement and the
connection made by the Mon. was
from the County Line. between Sur 160
I & G. R.R. Co. at Beaver Lake ~~the~~
and the 18th Mile Monument, is very
erroneous. The McDowell Brothers who
were ranching at Beaver Lake at the
time the County Line was run say
that they showed the Surveyor
what they thought was the SW
Cor of Sur 160. and that he ran
from a St Md. in the flat which
is 8 or 600 V² North end about
160 V² W. of the true SW corner

B5

7
and that - he ran from it - This pile
of stone was pointed out to me and is
the one that the settlers have erroneously
thought to be the true corner.

I G. M. Williams
State Surveyor, do hereby certify
that - the foregoing field Notes correct-
ly and truly describe the work,
as done on the ground and
that - all measurements and courses
monuments and corners with marks
both natural and artificial are
correctly described and that all
the work was verified by checks
Given under my hand this
Sept 30th 1889.

G. M. Williams
State Surveyor

e / 11 15

Val Verde Co
Sk. File DD'

Box No 1

Alfred C.

54065 numbers

Rockwell County
Sk. File No

Alfred C.
March 1953
Gardner

Copy

Val Verde County
Geol. Land Office
Austin Texas Dec. 28/89

"Approved"

R. M. Hall
Comr.

Signed Jan 31/83
by E. von Rosenberg
before patenting, not knowing
that there was an excess
between the N. E. corner
No 21 and N. E. corner No 23

Copy
No 21
No 22
No 23
No 24



Dolan Spring Survey No 100 for 130 acres
Stephen Dolan asses of Wilhelm Schmidt
Beg. at a stone mound on top of a hill 720 vrs
East and 628 vrs South of N.E. Corner of No 12
and S.E. Corner of No 13 Blk F.
Thence South 857 vrs to a stake and mound
for corner. Thence East crossing Ricardo Creek
about 400 vrs below Dolan Spring to a stake
and mound for S.E. corner. Thence North
crossing a fork of Ricardo Creek 857 vrs. to a
stake and mound for N.E. corner.
Thence West 700 vrs Cross Ricardo Creek
857 vrs to place of beginning

Surveyed Nov 1877.
Jacob Kuechler,
D.S.B.D.

This survey was made to
include the Spring
In locating the above survey
Mr. Kuechler ran South from
the N.E. cor. * 21 & N.W. cor
* 22. —

2079	2120
2079	1990
2024	1908
<hr/>	
6182	6018
6018	
<hr/>	
	164

Field note of Sur No 1 Blk F as pat.
being 6 miles South from the S.W. corner of No 118
and S.E. Corner of No 117 Blk E.

Beginning at a stake and mound set for S.E. corner of Survey No 2
Thence North 1900 vrs to a stake and mound set for N.E. corner of Survey No 2
Thence East 1900 vrs to a stake and mound set for S.E. corner of Survey No 8
Thence South 1900 vrs to a stake and mound for S.E. corner.
Thence West 1900 vrs to the place of beginning.

Survey No 1 Blk F should begin
11400 vrs South and 4282 vrs East from
the Original N.W. corner of Survey
No 22 and N.E. corner of Survey No 21
this Block. Thence North 1900 vrs.
" East 1900 vrs.
" South 1900 vrs
" West 1900 vrs. to
place of beginning

E. von Rosenberg
Examining Draughtsman

Copyright 1901

Counting down from
1901 to 1900

Space of bed in m. s. i. s.

West 1200 m. s. i. s.

North 1200 m. s. i. s.

East 1200 m. s. i. s.

in Block. The space of survey No. 81
The original of N. W. corner of Survey
No. 81 is south of road in East from
Survey No. 1 B.L. E. in space of bed in
H 128

H 128

1902	6018
6018	6018
5058	1902
5059	1891
5059	5150

The space of bed in m. s. i. s. is
The space of bed in m. s. i. s. is
The space of bed in m. s. i. s. is
The space of bed in m. s. i. s. is

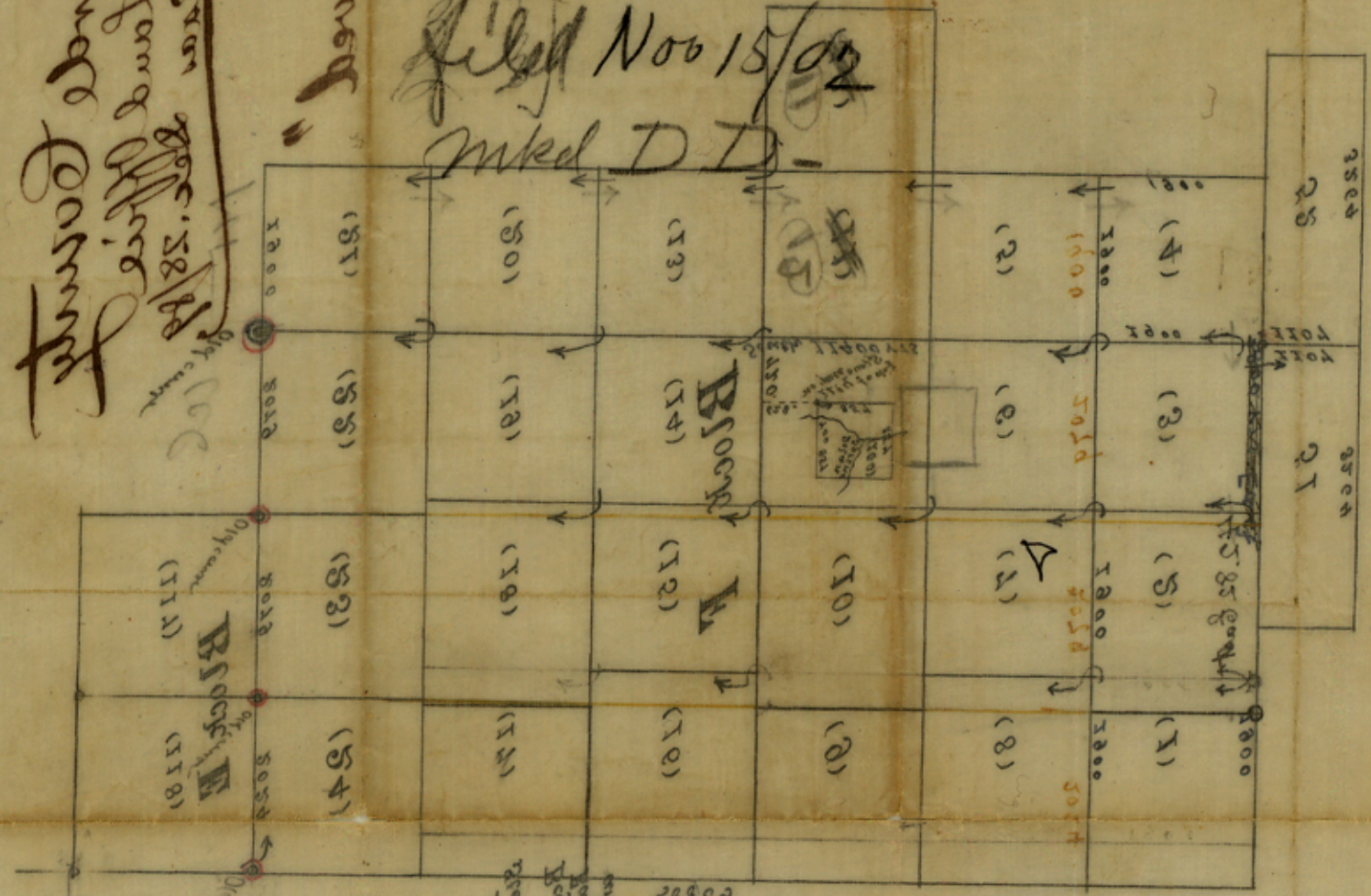
The space of bed in m. s. i. s. is
The space of bed in m. s. i. s. is

The N.E. corner of No. 81 is
The N.E. corner of No. 81 is
The N.E. corner of No. 81 is

The space of bed in m. s. i. s. is
The space of bed in m. s. i. s. is

The space of bed in m. s. i. s. is
The space of bed in m. s. i. s. is
The space of bed in m. s. i. s. is
The space of bed in m. s. i. s. is

counter 390



No. 81
Val Verde Co
Sketch file

No good
Sketch
filed Nov 15/00
m. s. i. s.

Approved

Val Verde County
Surveyor
John. Land Office
1900. 58/88

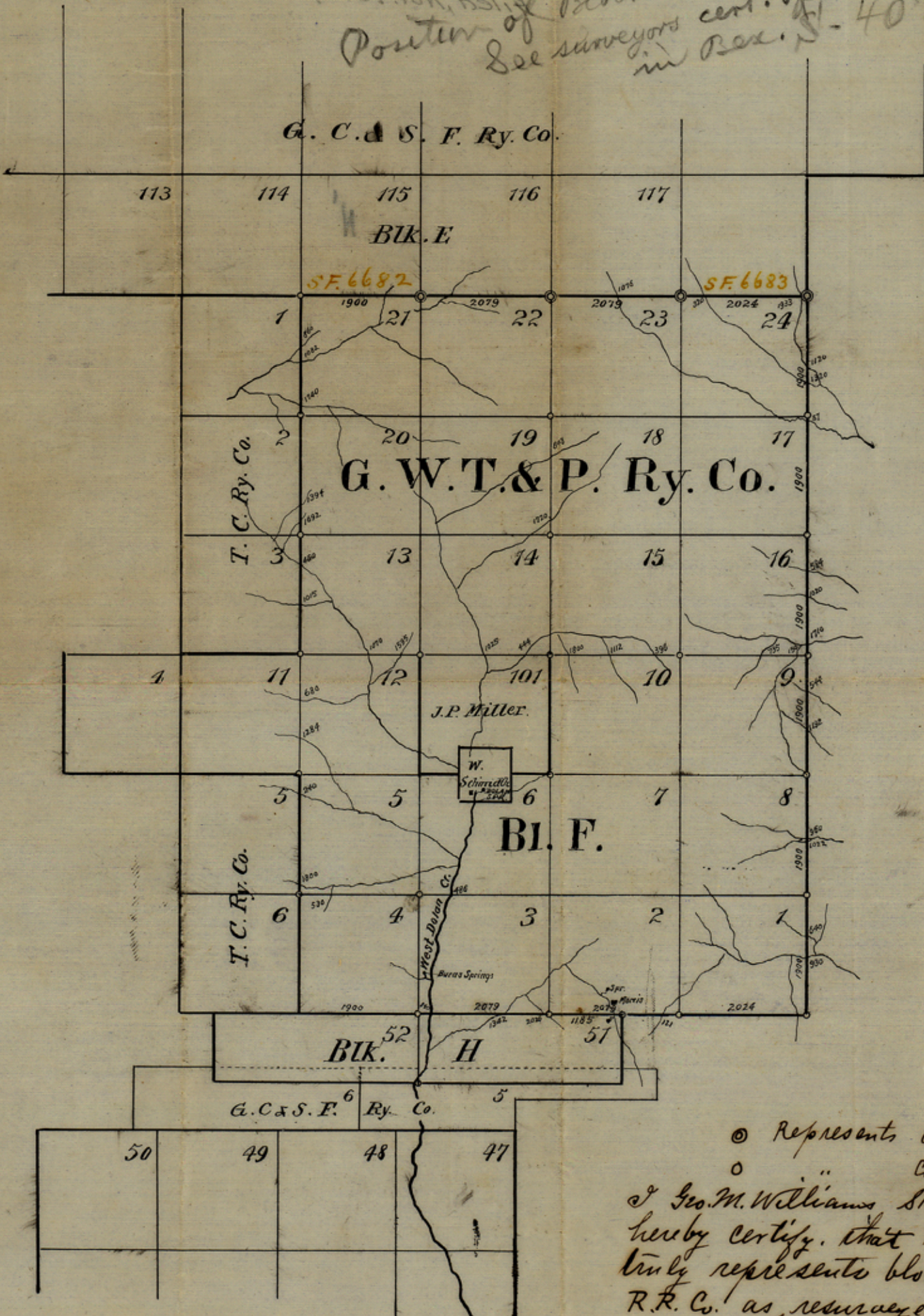
The bed was inserted in the field notes by F. M. Rosenberg Jan 21/01
before entering the knowledge that there was an excess between the
N. E. corner No. 81 and N. E. corner No. 83

Original Survey of Block E

Geo. M. Williams State Surveyor
in Blk. E & H
dated Nov. 4, 1902
Filed Nov. 10, 1902

Position of Block E is incorrect
See surveyors cert. of correction
in Res. S. 40217

E. von Rosenberg



Val Verde County

● Represents Original corners
 ○ " " Corners made by me
 I Geo. M. Williams State Surveyor, do
 hereby certify, that this sketch
 truly represents block F. G. W. T. & P.
 R. R. Co. as resurveyed by me, June
 1889. Given under my hand
 at San Antonio Texas this the
 4th day of November, 1902
 Geo. M. Williams
 State Surveyor

Filed in Genl Land Office
Nov. 10th 1902
Wise

Variation 9° 40' E

counter 39078

N

counter 39078

Verde Co Sketches

Geo M. Williams SK, of Surs.
in BIKs E, F, & H,
Dated Nov. 4, 1902
Filed Nov. 10, 1902.

*Block E is in interest
of ...
in Dec. 2, 1901*



Verde County

at Verde Co. as represented by me. June
1889. Since under my hands
at San Antonio Texas the 10th
day of November, 1902
Geo. M. Williams
State Surveyor

Represent Original corners
corners made by me
of Geo. M. Williams State Surveyor do
hereby certify that this sketch
truly represents block F. G.W.T. & P.
R.R. Co. as represented by me. June
1889.

Filed in Public Land Office
Nov 10 1902

variation of 402
counter 39079

Counter 39079

W