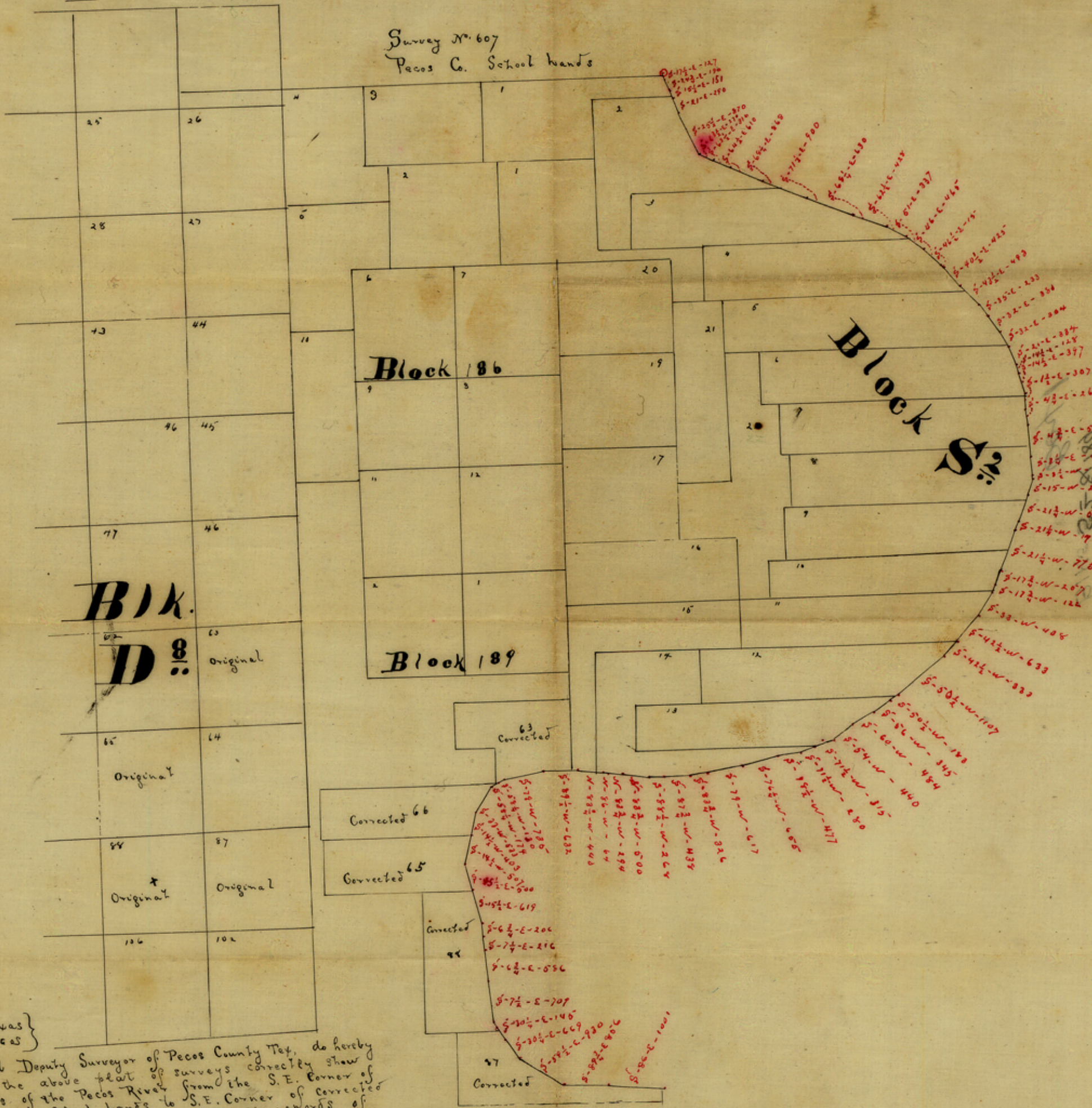


Survey No. 607  
Pecos Co. School lands



**Blk. D 8**  
Original

**Block 186**

**Block 189**

**Block S2**

The State of Texas }  
County of Pecos }  
I, L. M. Durrell Deputy Surveyor of Pecos County Tex. do hereby  
certify that the above plat of surveys correctly show  
the meanders of the Pecos River from the S. E. Corner of  
No. 607 Pecos Co. School lands to S. E. Corner of corrected  
Survey No. 87 Block D8 as shown by the records of  
the Surveyor of Pecos County Page of Book C'; Page 4 17  
Book B'; Page 187, 189, 190, 191 & 192 Book B'

L. M. Durrell  
Deputy Surveyor Pecos Co. Tex.

Corrected  
186  
189  
S2  
S1

00193 1/2 100

XXX-5  
val Verde Co

no date

LW Durrells meanders of Pe-  
Cos R., opposite & along  
BIRs S 2 & 189.

Box 1



The meanders of Block 186  
 were surveyed by  
 Wm. D. M. D. in 1852  
 and are shown in red  
 ink on this map. The  
 meanders of Block 187  
 were surveyed by  
 Wm. D. M. D. in 1852  
 and are shown in black  
 ink on this map. The  
 meanders of Block 188  
 were surveyed by  
 Wm. D. M. D. in 1852  
 and are shown in black  
 ink on this map. The  
 meanders of Block 189  
 were surveyed by  
 Wm. D. M. D. in 1852  
 and are shown in black  
 ink on this map.

Block 187  
Ground No. 100