

Z-3.

Box 2

Letters, Certificates, explanations, et al, by W^m Cassin, et al.
sundry dates.

counter 39/31

I Am Cassin formally
Deputy Dist Surveyor of Texas
Dist. do hereby state upon
Oath that I have measured
the distance from the S.W.
corner of Survey No 160, J. &
G. Cr. R.R. Co. to upper end of
head of Beaver Lake and found
this distance to be East about
1400 varas and North about
550 varas and that said
Lake in July 1879 was
about 250 varas long and
35 varas wide.

San Antonio Aug 23rd 1882

Wm Cassin

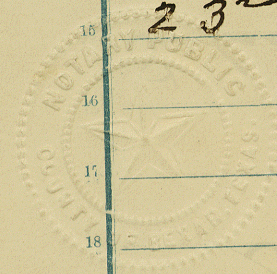
Subscribed and sworn to before me this

counter 39/28

23rd day of August A.D. 1882

W.W. Herron

Notary Public Buxar Co Texas



15
16
17
18
19
20
21
22
23
24
25
26
27
28
29
30
31
32

Z-3

1882

a¹

I, Samuel Stephens County Surveyor
of Baudera County hereby certify ~~that~~
that between the 8th day of June and
the 12th day of July A.D. 1879 I made
a connection from "Paint Rock Water
Hole" to "Beaver Lake" and by
actual measurement on the ground
find the course and distance to be
S 87° W 113244 or -

Witness my official
Signature in Baudera this
12th day of August A.D. 1882
Samuel Stephens
Co. Sur. B. Co

a²

Val Verde
2-3

(Now Val Verde Co.)

Statement - of
Cassin + Stephens
in regard to the
position of Beaver
Lake -

James
Stephens
Wm

Wm Cassin

counter 39130

1882

NOT
16

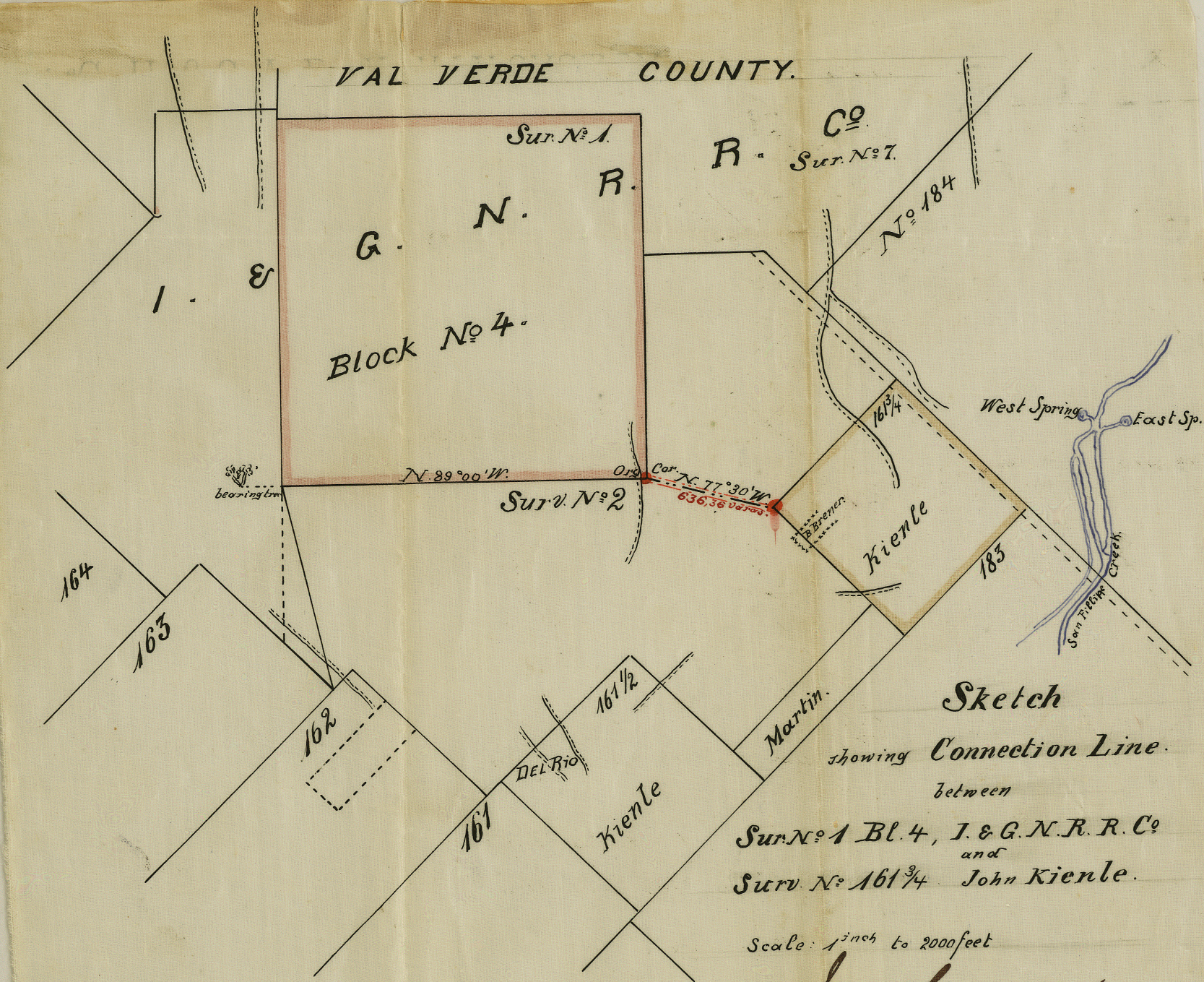
23rd day of August a. d. 1882

Wm Stephens

20

20

VAL VERDE COUNTY.



Sketch

showing Connection Line
between

Surv. No. 1 Bl. 4, I. & G. N. R. R. Co.
and
Surv. No. 161³/₄ John Kienle.

Scale: 1¹/₂ inch to 2000 feet

James Cowan
counter 39132

San Antonio, Tex. April. 9th 1885.

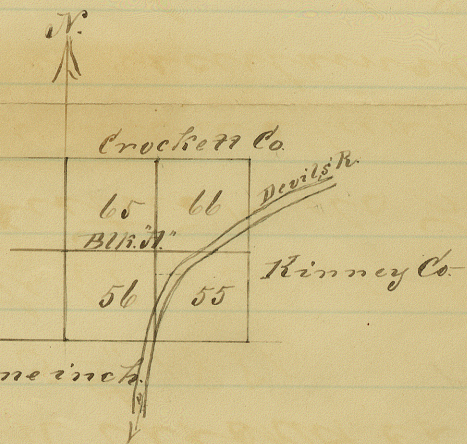
Dec 16/80

Camp Hudson Crockett Co. Texas
Mch. 25th 1881

J. A. Wyszchetski, Deputy Surveyor
of Bexar Land District do hereby
certify that from an actual Survey
made by me, it is ascertained that
Davis River runs through Survey
No. 55, in Block "A," I. & G. N. R. R.
Surveys in Crockett Co., as shown
on the accompanying sketch
and that said River is, at that
point, from (150) one hundred
and fifty rods to (250) two hundred
and fifty rods wide.

Given under my hand
the day and date first
above written

J. A. Wyszchetski
Deputy Surveyor, Bexar Land Dist.



1881
No. Z-1