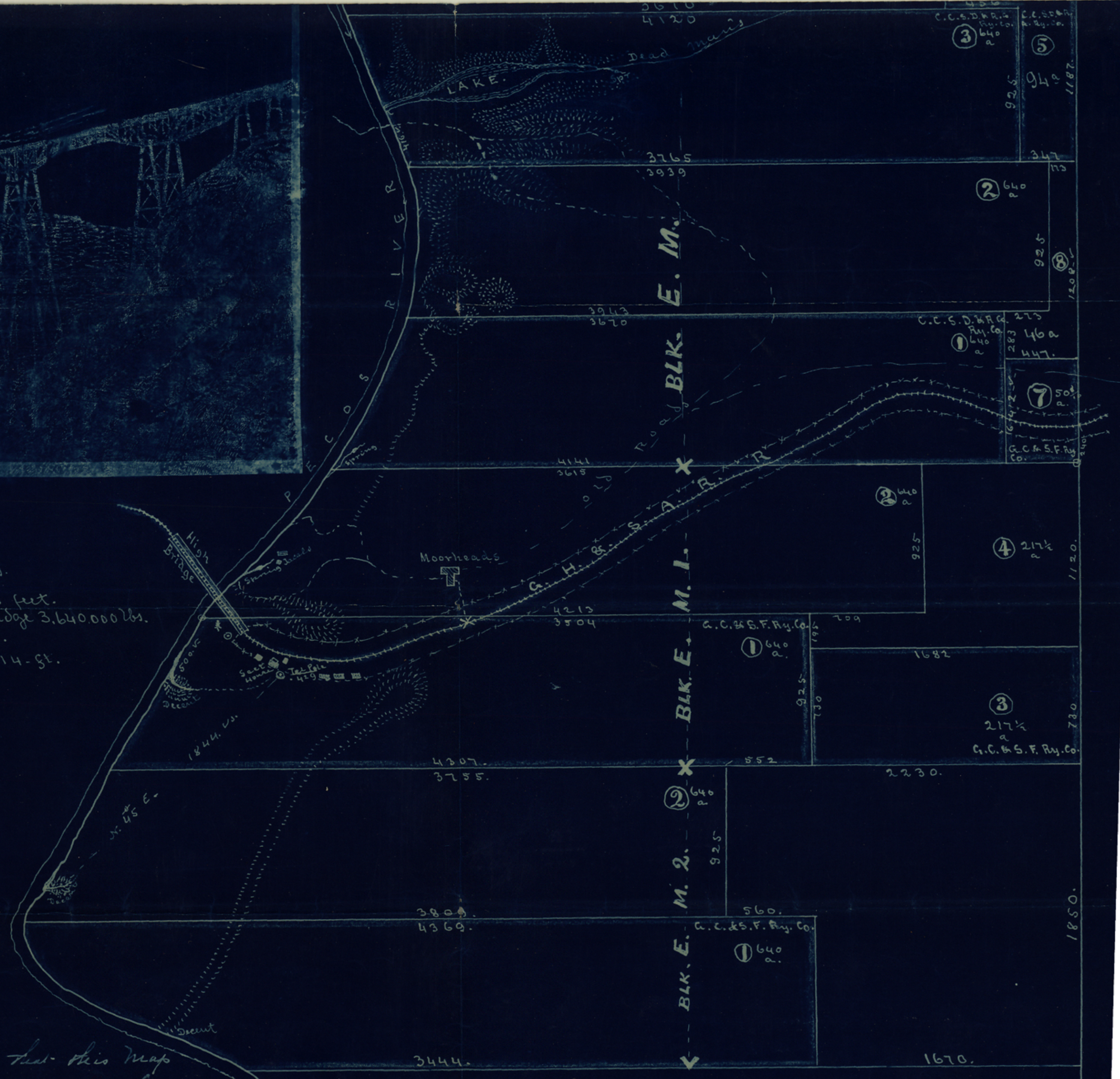


PECOS.  
 High Bridge  
 Val Verde County Texas.  
 Length 2,180 feet.  
 Height above water 321 feet.  
 Weight of metal in bridge 3,640,000 lbs.  
 Built in 1893.  
 Altitude 1414-ft.



I certify that this map  
 is correct according to the  
 records of my Office.  
 Walter Stickland as Sur  
 or John W. Pines as as sur  
 Del Rio Tex  
 Sept 1912

Sects. 1.2.3.5.7.8. E. M. } East side of Pecos in  
 " 1.2.3.4. E. M. 1. } Val Verde County Tex.  
 1.2. E. M. 2. }  
 Showing location of High Bridge & S. P.  
 R. R. as surveyed by A. F. Dignowity C. E. Sep. 1902.

County 39144



Z-15

Sketch in  
Val Verde Co.  
High bridge on  
Pecos river

Walter Strickland's SK. of SURS  
on East side of Pecos R. in  
vicinity of "High Bridge" of S. P.  
R.R. Co.  
Sep. 1902.

P<sub>o</sub>

Filed Jan 24/1902  
John H. Powell,  
County Clerk,  
by E. J. [unclear]  
Examined & [unclear]

counter 39145