

Sketch File No. 27

Val Verde County

W.T. Hope's Sketch

Surveys in Blk. OV.

Filed September 18th 1931

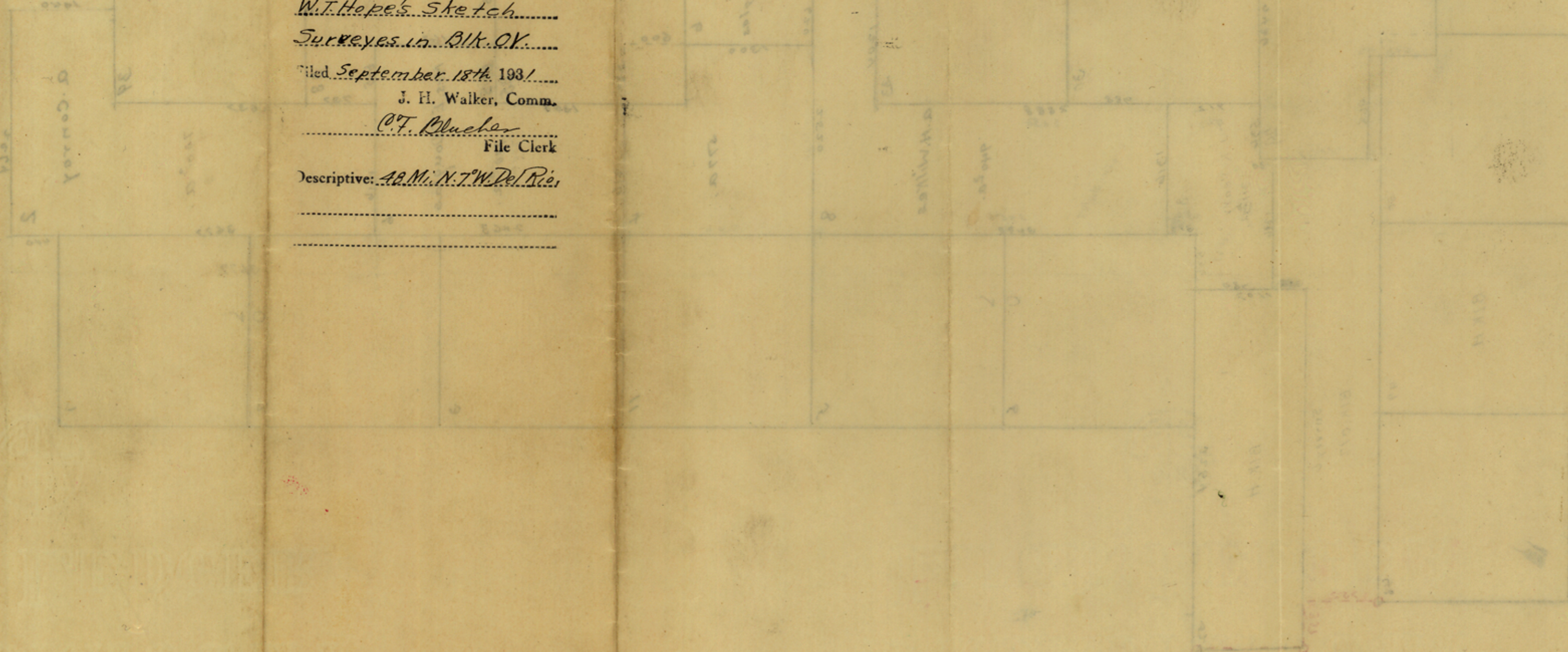
J. H. Walker, Comm.

C. F. Blucher

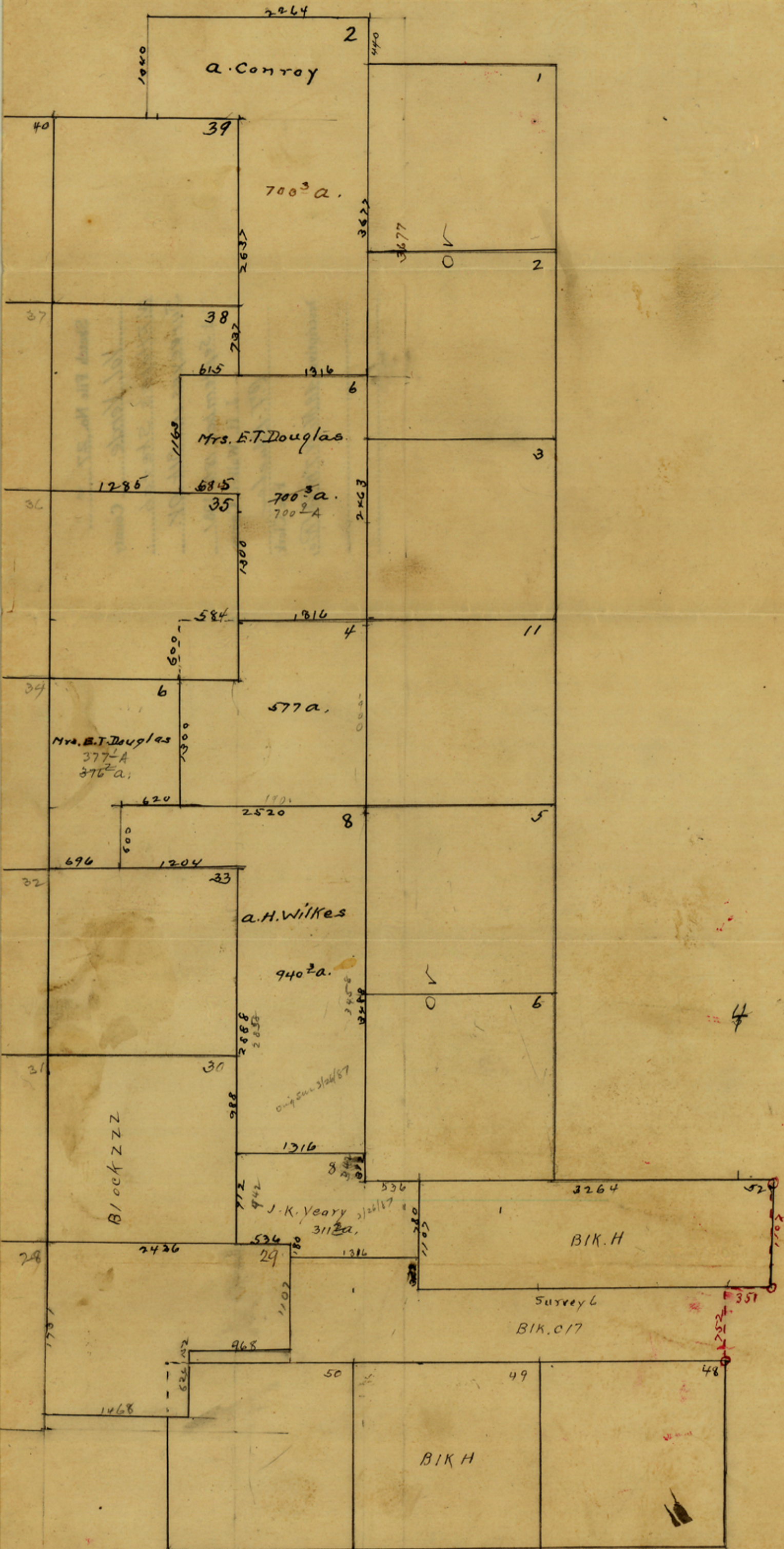
File Clerk

Descriptive: 48 Mi. N. 7 W. Del Rio

county 39234



*[Faint, illegible handwritten notes on the right side of the page, possibly describing survey details or land ownership.]*



I, W. F. Hope, County Surveyor of Val Verde County, hereby certify that I found lands shown on above sketch to be correctly platted, ascertained by connecting lines heretofore ran, and also between corners made by G. M. Williams in Blocks F. & H.

W. F. Hope  
Co. Surveyor,

See Hope's Sk in SF9864 filed 9/29/31.