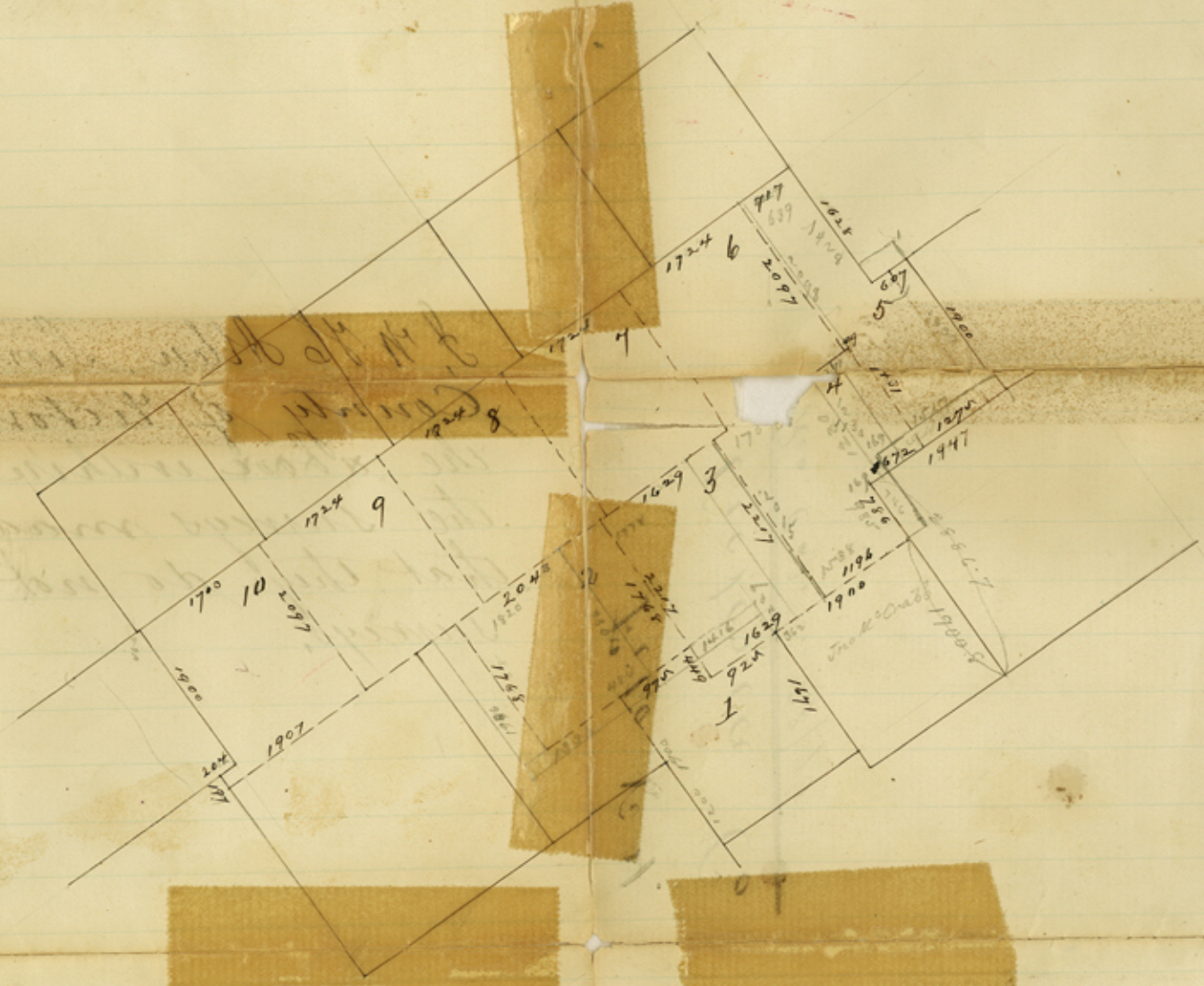


Victoria Oct 6th 1876

I, W. H. Allen, Surveyor in and for the
County of Victoria hereby certify that
the ~~above~~ within is a correct plat of
the surveys made for the V. & N. C. R.R. and
that they do not conflict with previous
surveys.

W. H. Allen
Co Surveyor Victoria Co

Block No 2
 T. + N. U. R. R.
 Victoria Co
 Scale 2000 Yds. = 1"



1000
 1621
 229

1728
 862
 1418

2886
 1900.8

986

File No 4.

Victoria Co

Rec. October 28/76

[Faint, illegible handwritten notes, possibly bleed-through from the reverse side]

counter 39519