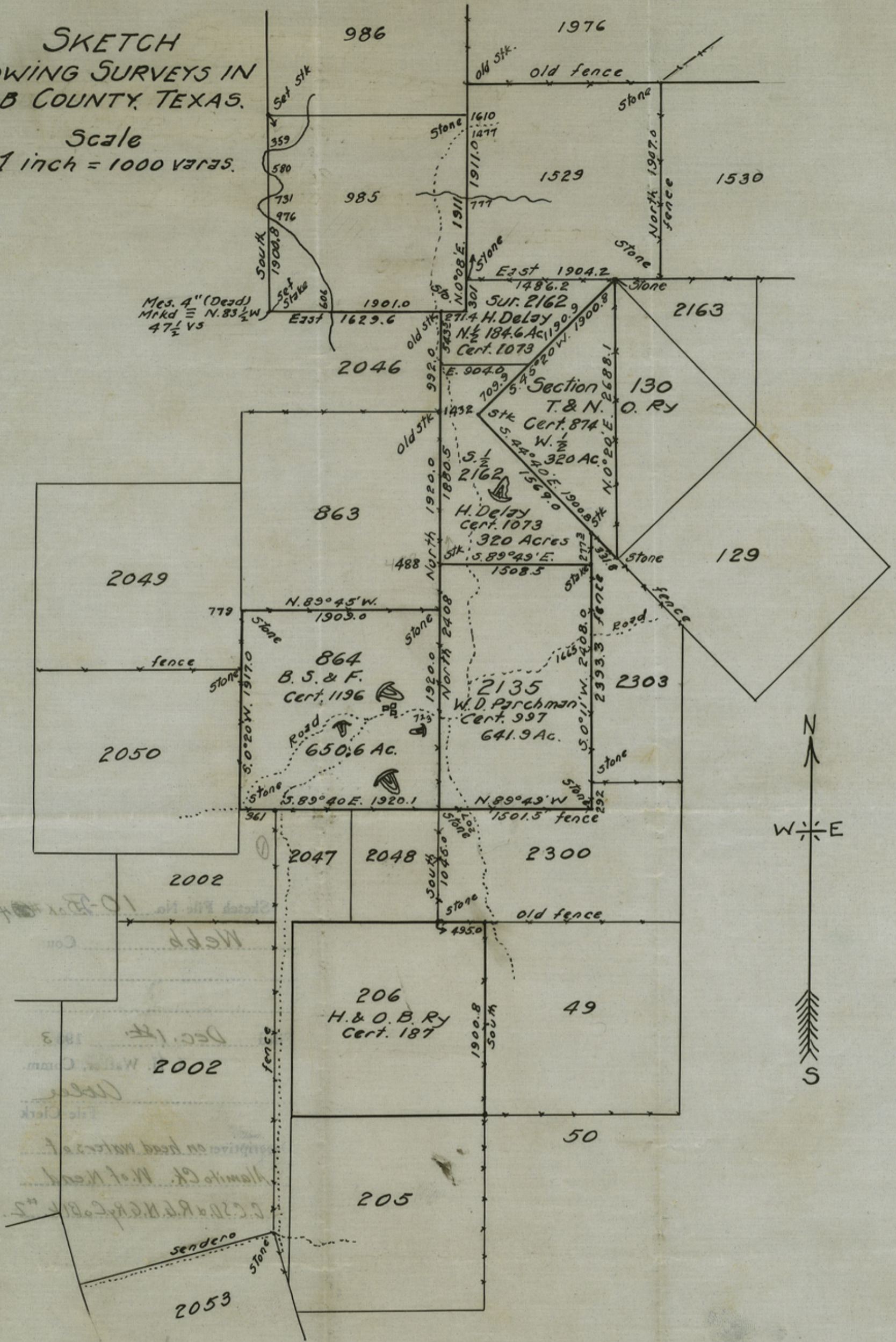


SKETCH
SHOWING SURVEYS IN
WEBB COUNTY, TEXAS.

Scale
1 inch = 1000 VARAS.



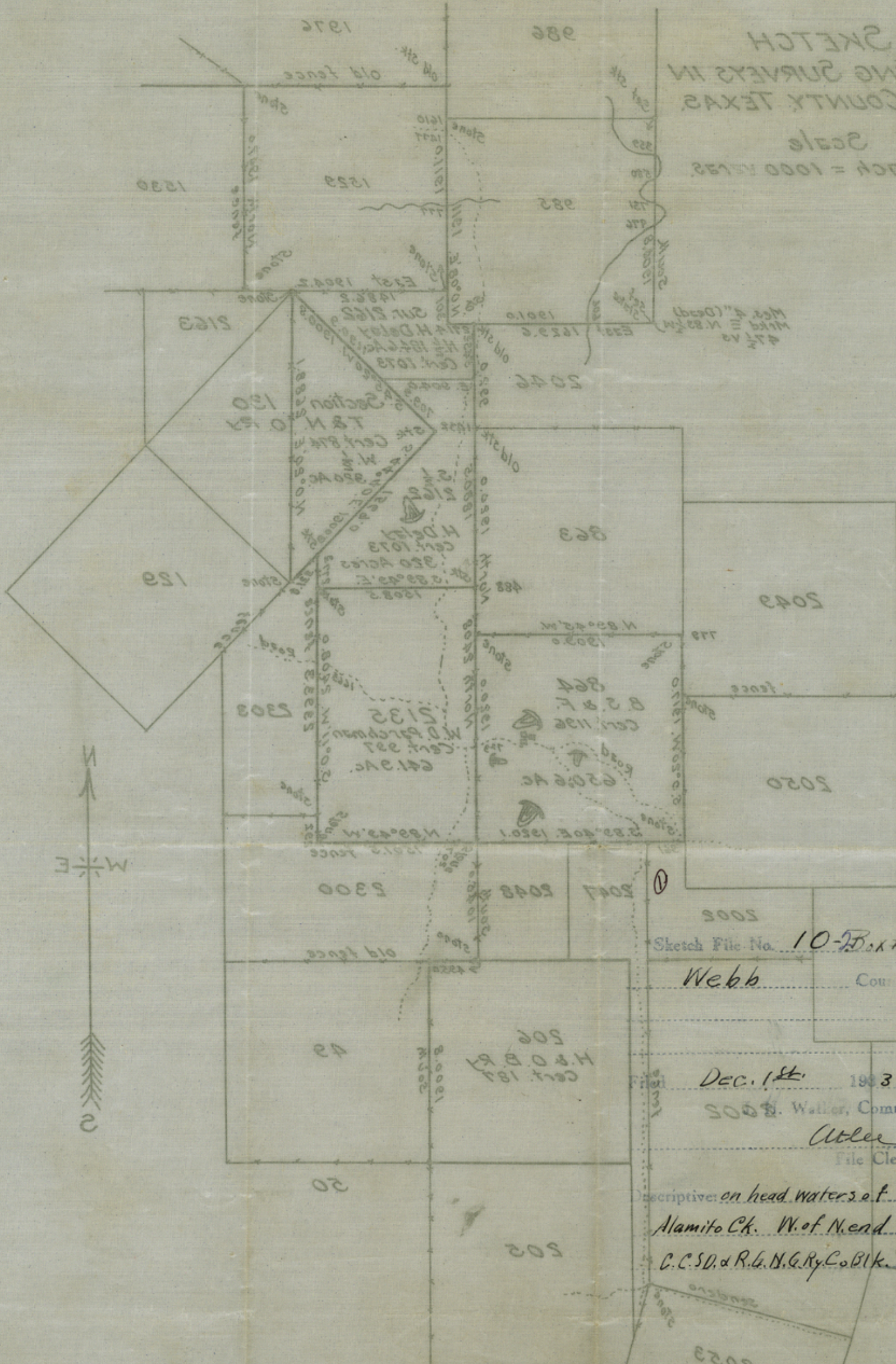
State of Texas
County of Webb.

I, A. R. Villarreal, a Licensed State Land Surveyor, do hereby Certify that the foregoing Sketch correctly represents results of surveys made by me on October 3rd to 7th. A. D. 1933. and all corners and lines shown are just as they exist on the ground.

Witness my hand this the 27th day of November A. D. 1933.

A. Villarreal
LICENSED STATE LAND SURVEYOR. Go

SKETCH
SHOWING SURVEYS IN
WEBB COUNTY TEXAS
Scale
1 inch = 1000 feet



Sketch File No. 10-Box #4
Webb County

Dec. 1st 1913
B. Waller, Comm.
Atlee
File Clerk

Descriptive: on head waters of
Alamito Ck. W. of N. end
C.C.S.D. & R.G.N.G.Ry. Co. Blk. #2.

Go'

I, A. R. Villarreal, a licensed State Land Surveyor do hereby certify that the foregoing sketch correctly represents results of surveys made by me on October 3rd to 7th A.D. 1913 and all corners and lines shown are just as they exist on the ground.

In witness my hand this 27th day of November A.D. 1913.

LICENSED STATE LAND SURVEYOR.
A. R. Villarreal
Go

Examining Draftsman.

GENERAL LAND OFFICE.

As no original corners were found at the S. E. & S. W. corners of Survey No. 2162 these corners were determined and established by course and distance from stones at old fence corners; the recognized S. E. & S. W. corners of survey No. 2135. Sketch shows why the east line of 2162 at its S. E. corner was reduced from 451.3 to 277.3 vs. it also shows why the distance from the S..W. corner of Section 1529 to the S. E. corner of 985 was reduced from 500 to 301 varas.

All fences & corners shown are the recognized lines and corners of surveys shown on sketch. Most of the fences were built over 25 years ago.

Villanua

Sketch File No. 10-5
Box 1
Mepp
County

Dec 18
1883
J. H. Walker
Comm
L. H. Clerk
Walker

Decisions on land papers of
Wm. G. W. of N. 004
C. D. D. V. N. 001 K. 5

Sketch 3044

Box 4

Sketch File No. 10-2

Webb County.

Filed Dec. 1st 1933

J. H. Walker, Comm
Whee
File Clerk

Descriptive: on head waters of
Alamito Ck. W. of N. end
C.C.S.D. & R.G.N.G. Ry. Co. Bk. #2

Walker

counter 39769

to the S. E. corner of 363 was reduced from 200 to 301 acres.

It also shows why the distance from the S. W. corner of Section 1833

line of 3162 at its S. E. corner was reduced from 481.3 to 244.3 ac.

S. E. & S. W. corners of survey No. 3162. Sketch shows why the east

course and distance from spouts at old fence corners; the recognized

Survey No. 3162 these corners were determined and established by

as no original corners were found at the S. E. & S. W. corners of

GENERAL LAND OFFICE

Examining Districtman.

Case returned