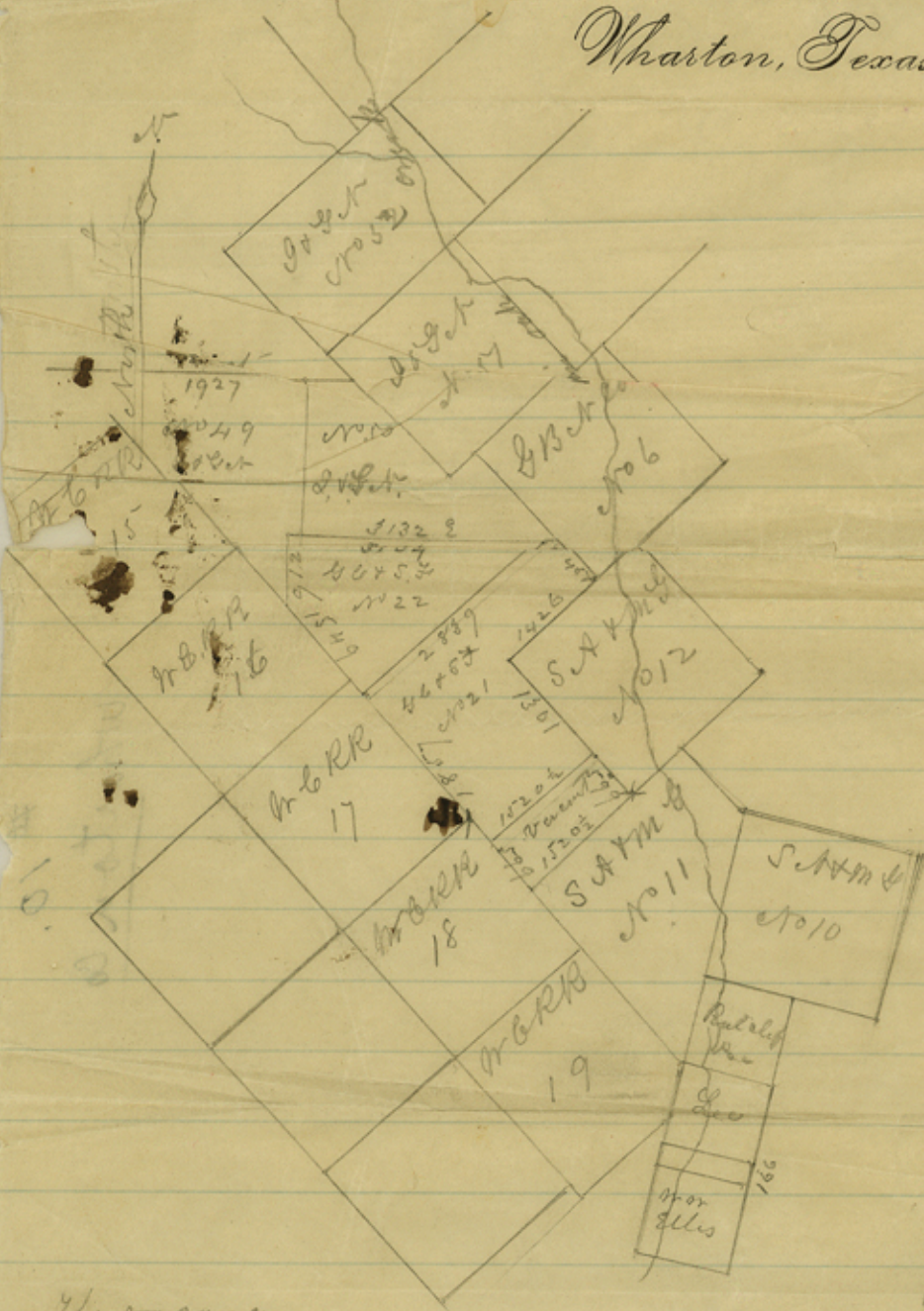


W. J. CLATON, County Surveyor Wharton County.

Wharton, Texas, Oct. 29th 1882



The vacancy
contains $161 \frac{1635}{5645}$ acres

There is a vacancy between
Lee & Elles surveys of
16600. See field notes
of Lee's Preemptions

Henry J. Schley Sr
Deputy Surveyor -

REGISTERED OFFICE

MOTARIO L. W.

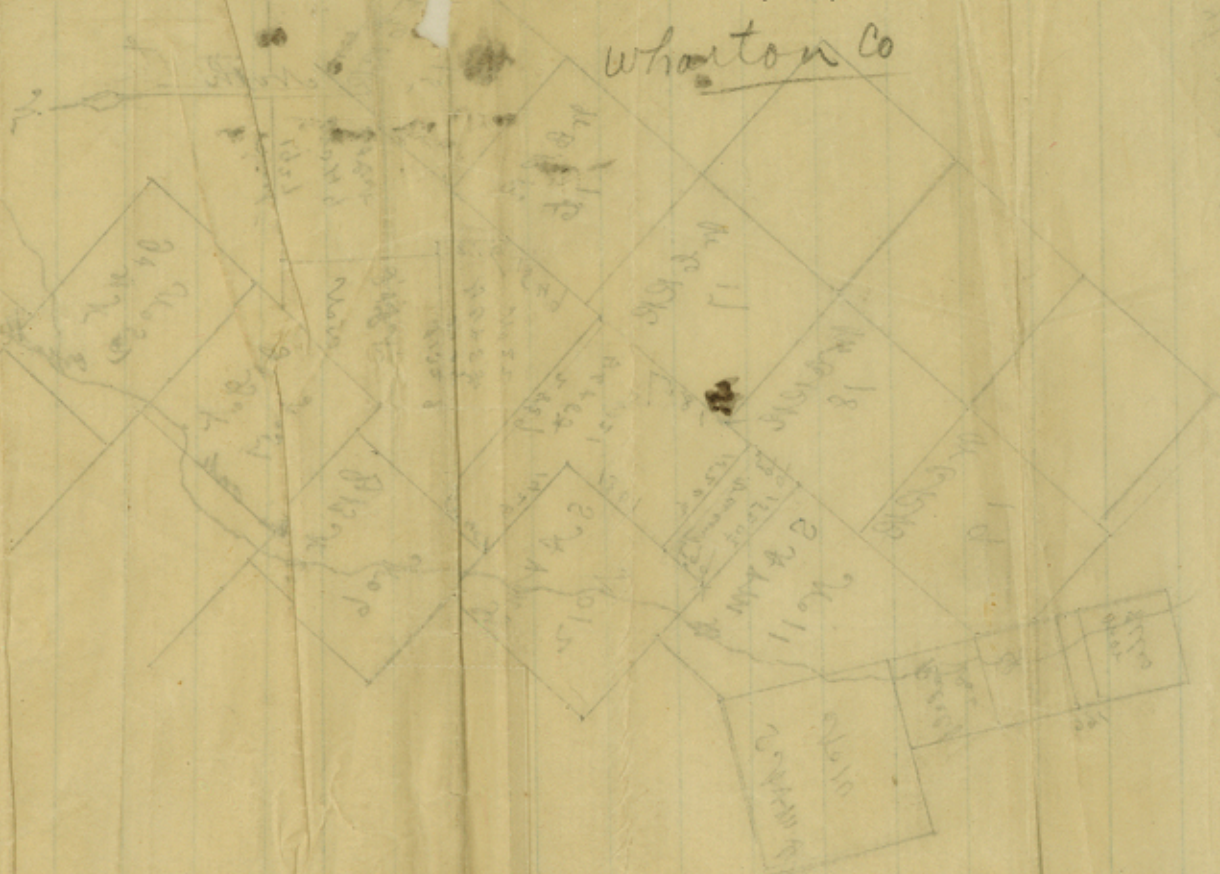
James L. Wharton

Wharton Co. Texas

1885

10-28-82.

10.
Wharton Co



The land shown on this map
 is the same as that shown on
 the map of the Wharton Co. Texas
 filed for record in the
 office of the County Clerk
 of Wharton Co. Texas
 on the 10th day of
 October 1882.

counter 39932

1885