

FRANK J. HARDY,
SURVEYOR AND DRAUGHTSMAN.
WHARTON TEXAS.

2420

Wharton, Texas, May 19, 1895.

Mr. M. E. Groos,
Chief Clerk G. L. O.
Austin, Texas.

Dear Sir: In reference to the survey of the McFarlan league, made by N. N. Leckie, State Surveyor, I must say, that in my opinion it is all wrong. I have lately been over the ground and after securing all the deeds in the McFarlan & Robinson & those in the lower portion of Evans league, and going over the lines run by said surveyor, I find, 1st That the line found by him & established as the upper line of the Robinson league, is on the ground, the upper line of the Draub ranch; the title of which is out of the Evans league, the Draub tract contains 1306 acres, and has a

+
counter 39938

2

width of 1173 vrs on the back line of said Evans league.

2^d Mr. Leekie reports having found no marked line at the point held on the ground as the upper line of the Robinson league. I do not see how he could have failed in finding the line, if he ran N. 65° E.

2800 vrs from a point 4833 vrs N. 25° E of the stone corner, for there is an old line in the timber with new chops over it, and plainly marked 200 or 300 vrs through timber.

At this point, the best evidence I have been able to find, establishing the upper corner of the Robinson is an old deed, in book A. p. 552, N. Co. Deeds, where Levi J. Robinson son of Wm Robinson, original grantee, sold to N. Stapleton, 631½ acres, the field notes are as follows: "Beginning at upper most corner of said league, from which (bearing trees, all of which are gone) thence ~~S. 17° E.~~ S. 17° E.

926⁷/₁₀₀ vrs; S. 71½° E 291⁷/₁₀₀ vrs; S. 86¾° E. 289⁷/₁₀₀ vrs mulberry stake, ^{bearing trees gone.} ~~the~~ cor on N. bank of

FRANK J. HARDY,
SURVEYOR AND DRAUGHTSMAN.
WHARTON TEXAS.

2

Wharton, Texas, 189.....

Colorado River. Thence S. 65° W. 3140 vrs to
cor. in prairie. Thence N. 25° W. 1283 vrs to
cor. in prairie. Thence N 65° E, 2800 vrs to
place of beginning, containing 63 1/2 acres of land.

The accompanying plat shows the river
as it is on the ground, by meanders taken
by Judge Schley, a few years ago, and as you
will note, the above meanders fit it very
close. The above meanders will not come
anywhere close to fitting the river above
or in any other place.

3^d The line adopted by Mr. Leckie as the
lower line of the Robinson league is what
I find on the ground to be the lower line
of the upper half of the lower half on 1107
acres sold by Robinson to G. Sutherland.
The first land sold by said Robinson out
of his league. All the lines of this tract

are well defined. The land finally is owned by The Stafford estate and known as "Rancho Grande," and as for the stone corner mentioned by Mr. Leckie as being the S.W. corner of The Robinson league, I will state that there were four of such stones put for the corners of said "Rancho Grande," two of which can yet be found. Below The Sutherland $\frac{1}{4}$ league, Robinson sold the lower $\frac{1}{4}$ of his league, & the field notes are as follows: Book A, page 16, W. Co. records: " $\frac{1}{4}$ of a league, the lower $\frac{1}{4}$ of league granted to Wm Robinson. Beginning on the N. bank of The Colorado River at the lower corner of a tract of land sold to G. Sutherland.

Thence with the meanders of said river to the lower corner of said league. Thence with lower line of said league to its S.W. corner. Thence with the back line of said league to S.W. cor. of The $\frac{1}{4}$ of said Sutherland

FRANK J. HARDY,
SURVEYOR AND DRAUGHTSMAN.
WHARTON TEXAS.

5.

Wharton, Texas, 189.....

Thence with lower line of said Sutherland's
land to the place of beginning. 1107 acres.
Robinson died and having sold the lower
half of the league, his children inherited
the balance. The heirs sold 2297½ acres
and after measuring this quantity, sold
R. H. Tobin what was left, or the excess
in the league, the bounds are as follows:
"312 acres of land bounded on North by
the above 1066 acres; on E. by Colorado
River; on S. by ¼ of league owned by Geo.
Sutherland; and on W. by the W. line of
the league." The heirs first sold 631½ acres
(above mentioned.) Then 2 tracts of 300 acres, calling
for the 631½ acre tract & giving same bearing
trees in field notes, then a tract of 1066 acres,
making 2297½ acres. Then finding that there
was still 300 acres left, sold same to Tobin.

+

counter 39942

on the same day they sold him the 1066 acres.
 All the 4 above tracts call for each other
 + the distances to the back line called for
 in the field notes come very near fitting
 the river as measured.

4th In the McFarlan league, things are
 a little mixed. That is, the deeds for the
 last 11 years do not conform to the older
 ones. McFarland sold the lower half, then
 the upper half. A description of the
 upper half is as follows: Beg. at the
 upper corner of league No. 8, or McFarlan
 it being the lower corner of No. 7 on
 N. side of the Colorado River, which
 corner is in the prairie that approaches
the said river bank. Thence S. 65° W.
 with the upper line of said league No. 8,
 5000 vrs. to the N. or N.W. cor. of said league
 Thence S. 25° E. with N. boundary of
 said league to a point from which a
 line running N. 45° E. to the Colorado
 River, Thence up said river to beginning,
 will contain 2214 Acres being the upper half league
 counter 39973 + Wheaton Co. St. File #14

FRANK J. HARDY,
SURVEYOR AND DRAUGHTSMAN.
WHARTON TEXAS.

7.

Wharton, Texas, 189

You will notice that the call for the upper corner of the McFarlan calls for a stake in the prairie that approaches the river bank: A line run N. 65° E. from a point 1170 vrs S. 25° E. of the stone corner in Mr. Leckie's plat will strike the Colorado river at the only place where the prairie approaches the river bank, for a mile up or down said river. & the distance would be 7240 vrs. Mr. Leckie does not represent the river correctly on his map.

Starting at the prairie corner above, and running out the McFarland league field notes: S. 65° N. 5000 vrs; S. 25° E. 4000 vrs; N. 87° E. 5300 vrs. & you are within a hundred or so varas of a continuation of the Wm Kincheloe's league upper line. Then, N. 20° E. to river would be more
+ counter 39944

thaw 3500 vrs, but there are few if any leagues that hold out exactly on the last call, and all the leagues above overrun on last call for river.

With all the facts before me I am of the opinion that the survey made by W. N. Leckie should not be adopted and if already adopted, should be upset, and I suggest that the said Leckie be returned, and that he with the chief clerk in the Land office, who is a practical surveyor, and myself go up on the ground, and that the said chief clerk be made referee in the matter, and that his decision shall be accepted by the other two, and the parties represented by either said Leckie or myself ~~to~~ agree that whoever is wrong will pay the expenses of said chief clerk, and I hereby guarantee on behalf of the property owners injured by the said Leckie's survey, to pay the actual expenses of said chief clerk, in case I am wrong.

FRANK J. HARDY,
SURVEYOR AND DRAUGHTSMAN.
WHARTON TEXAS.

2.

Wharton, Texas, 189.....

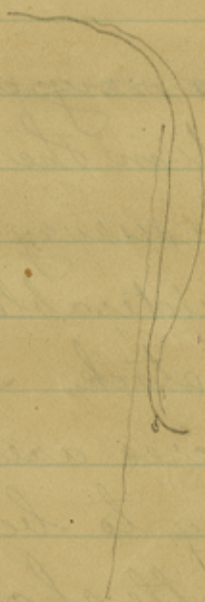
It is very necessary that this matter be settled in the near future, as by said Leckie's survey property owners are deprived of considerable land which is valuable for their stock. In the Draub ranch over 600 acres are made by said Leckie's survey to be vacant land & that clouds the title should it be offered for sale.

Very respectfully
Frank J. Hardy,
Geo. Sur. Wharton Geo Texas.

14-

Letter with Wharton
Co. SK File No. 14

(S)



5/19/95

counter 39947

State of Texas }
County of Wharton }

Recd 11/11/95
H.S.

To Martin E. Gross Esq
Chief Clerk, Acting Commissioner
General Land Office
Austin - Texas -

Sir

Under my appointment as State Surveyor, and in compliance with your instructions to investigate the location and survey the Wm McFarland league and adjoining surveys in Wharton County, Texas, I have to state that I have made a thorough investigation of these surveys, and beg respectfully to submit the following report and plat showing their actual condition upon the ground, and annex a detailed explanation of the reasons why I adopted certain lines and courses as being the true original location of the Wm McFarland league with its resultant effects upon the adjoining surveys, as shown upon said plat. -

Beginning at the N.E. corner of the Wm McFarland league, which is also the S.E. corner of the Wm Robinson league, on the west side of the Colorado river, at a point which is in the lower bank of the river, and from whence I found a large willow mark \times bearing S. 24 1/4° E. 4 1/2 varas, and an arch 12 in. dia. mark \times , bearing S. 62° W. 35 7/8 varas.

Thence I ran S. 65° W. with Vernier at 8° 35' E., at 71 3/4 varas passed a dead Elm standing in a little knob with old line marks, at about 150 varas entered the prairie and continued course following a fence line between property owners on the Wm Robinson and Wm

2/03

charles W. St. Hill #14

M^cFarland survey, at 5000 varas set a stake in the prairie for the N.W. corner of the 10th ~~Robinson~~ M^cFarland league in the 10th Robinson South boundary, at 6000 varas set stake for distance of W^m Robinson's South boundary, in all 6585 varas came to a rock and stake one vara apart evidently set by different surveyors for the W^m Robinson Survey S.W. corner -

Thence I ran N. 25° W. across open prairie, at 4833 varas pass a fence corner, in all 6000 varas for distance to W^m Robinson N.W. corner in J. S. Evans' league South boundary -

Thence N. 65° E. across prairie at about 3000 varas enter bottom timber and found plain marked line N. 25° W. 30 varas, at 3180 varas offset N. 25° W. 30 varas into marked line, in all 3217 varas N. 65° E. to the bank of the river from whence a ~~very~~ old ash tree marked with very old line chops bears S. 65° W. 11 varas, and an Elm 8 in. dia. marked \approx (later marks), bears S. 18 $\frac{1}{4}$ ° E. 5 $\frac{1}{8}$ varas - This point is about 30 varas above the mouth of a gully -

From the fence corner 4833 varas N. 25° W. from the rock at the W^m Robinson S.W. corner I then ran N. 65° E. 2800 varas to the Colorado river bank but identified no surveyor's line though we ran for 300 varas through large timber near the river bank. -

Beginning again at the fence corner N. 25° W. 4833 varas from the W^m Robinson S.W. - Thence ran S. 65° W. along the line of the Narciso Mancha survey, which I found to run at a variation of 8° E. at 3082 varas passed the S.W. corner of the J. S. Evans league as pointed out, in all 3781 varas to stake at the intersection of the A. J. McDonald 640 acre survey -

3/
Thence S. 20° E. 109 1/2 varas to a
stake pointed out as set by Surveyor H. J. Schley
Sr. for S. E. corner of the "A. J. McDonald"
in his original survey of the "Nasario Maucha".

Thence S. 71° W. at about 1150 varas
cross Mustang Creek, 1246 varas to a large
pinoak tree, marked C, standing on the north
bank of the creek at a bend as described
in the A. J. McDonald field notes, and
as shown in plan accompanying this
report -

To run out the 10^m M^o Farland
league, I then began as the stake set in
the 10^m Robinson lower boundary 5000 varas
S. 65° W. from the point of beginning. -

Thence S. 25° E. setting a stake at
4600 varas as called for. -

Thence N. 87° E. with the same variation
at which I had found the 10^m M^o Farland upper
or North boundary to run, at 5300 varas set a
stake, at 5764 varas intersected the West
boundary line of the A. M. Pierce 3777 acres
survey S. 19 1/2° W. 25 1/2 varas from its N. W. corner
which is also the Socorro Farming Co 568 acres
S. W. corner as fixed by said Surveyor Schley
upon the ground - in all N. 87° E. 6888 varas
to the intersection of the 10^m Nicholoe 1 1/2 leagues
West boundary. -

Thence S. 19 1/2° W. 177 1/4 varas to an
iron pipe driven in the ground which is the
recognized S. W. corner of the 10^m Nicholoe
1 1/2 leagues as fixed by said Surveyor H. J. Schley
by running S. 20° W. 3500 varas from the south
bank of the Colorado river, and which is also
a continuation of the John C. Clark lower
or East boundary on the other side of the river

4/10
as marked upon the ground. —

Going back to the stake at N. 87° E. 5300 varas, I then ran N. 20° E. and reached the river bank at 2525 varas. —

From the South bank of the river at the Wm. Knocheloe, 1 1/2 leagues N.W. corner as described I ran S. 20° W. with Vernier at 9 1/2° E. following the accepted line through the prairie for the Wm. Knocheloe West boundary and reached the iron pipe at its S.W. corner as described at 3486 1/2 varas. —

Beginning again at the stake set S 25° E. 4000 varas from the Wm. McFarland N.W. corner as surveyed. I then ran a corrected course to strike the iron pipe for stake at the Wm. Knocheloe S.W. corner N. 88° 23' E., vernier at 8° 35' E., 6825 varas and staked out the line for the Wm. McFarland South boundary, which is shown by the solid black line below the black dotted line in plan. —

From the Socorro Land Co. 568 acres S.W. corner which is a post in the prairie ran S. 20° W. following the line run by the said Surveyor Schley for the West boundaries of the A.M. Pierce 3777 acres and N. 61. W. & R. R. Co. and at 1612 1/2 varas reached post in the prairie set for inner West corner of N. 61 as corrected. Found line to run at a variation of 9 1/2° E.

Thence S. 87° W. with same variation, at 980 varas pass post laying on the ground. 2310 varas pass division corner between 13 & 14 St. & S. E. R. R. Co as corrected. 5109 varas distance for N.W. corner N. 14. as corrected, being also North corner S. & G. N. R. R. Co N. 6, at 5297 varas pass a Mulberry stake in the prairie pointed out as set by Surveyor M. J. Schley — in all S. 87° W.

5/
5657 varas to N.W. Corner of No. 6. S. C. R. R. Co
but found no stake. —

Thence ran N. $14^{\circ} 5'$ E. on a test line, and
closed on the stake set S. 25° E. 4000 varas for
the Wm. McFarland S.W. Corner, at 1389 varas. —

From the Mulberry stake pointed out as set
by Surveyor Sealey as described S. 87° W. 5297 varas
ran N. 25° W. on a parallel with the back line of
the Wm. McFarland league as run in this survey
and reached the Wm. Robinson South boundary at a
measured distance of 5209 varas at a point
S. 65° W. 5541 varas from the place of beginning. —

Commencing again at the point of beginning
of this survey I ran S. 25° E. 1300 varas, thence
N. 65° E. 2000 varas to the river bank but found
no line though the course ran through ~~river~~
bottom timber for about 1200 varas. —

Having in the manner described closed
the survey of the Wm. McFarland league, at
the request of Mr. A. H. Pierce I then made
a re-survey of tracts 61, W. C. R. R. Co, & 13 and
14 N. & S. C. R. R. Co. and 239 acres Sale Strip
field notes of which will be duly transmitted to
your office. — Tract 61 W. C. R. R. Co is
corrected within the lines run by Surveyor
Geo. W. Turnbull in November 1874 but is
reduced to 605 acres by the line before described
staked out for the South boundary of the Wm.
McFarland league. — Also No. 14 N. & S. C. R. R. Co
being as originally surveyed partly in conflict
with the said Wm. McFarland league I have
divided the shortage equally between the No.
13 & 14 reducing them both to 631 $\frac{1}{2}$ acres.
Each —

The McFarland lower boundary
I ran a course to close on the Wm. Kincheloe
S.W. Corner at a variation of $8^{\circ} 35'$ E. Corresponding
counter 39952

6
58

Wharton Co. Sh. File #14

with the variation of its upper and Western boundaries making its course read on the Compass N. 88° 23' E. but in the field notes of tracts 61, 13 & 14 and also the 239 acres I have made the called course for the same line where they run with the McFarland lower boundary N. 89 1/4° E. to fit the variation of 9 1/2° E. at which I found the other lines of those tracts to run upon the ground.

Survey began Decr. 29th 1894 and ended Jan. 6th 1895.

A. C. Bell }
Rob. Norman Col'd } Sworn Chairmen
J. C. Macfarren } Flayman

I, Wm. M. Leckie, State Surveyor for Wharton County Texas, do hereby certify that the foregoing described Survey was actually made by me upon the ground, on the date and with the Chain Carriers aforesaid, duly qualified, and that all the lines, boundaries and corners, with marks of the same whether natural or artificial, are truly and correctly described and set forth in the foregoing plat and field notes.

Witness My hand this 8th day of January A. D. 1895.

Wm. M. Leckie
State Surveyor, Wharton Co.

7
Explanation of Survey.

State of Texas }
County of Wharton }

Martin E. Groves Esq
Chief Clerk, Acting Commissioner
Gen. Land Office
Austin - Texas -

Sir

With a view to fully enlightening your office as to the condition of the Wm. McFarland Survey upon the ground and for the clear understanding of the foregoing field notes and the various lines upon the plat hereto attached I respectfully submit the following explanations as a part of this report of survey. —

Having made a thorough examination among the Spanish Archives of your office and the records of the Surveyors Office in Wharton County, I find that the Wm. McFarland League was originally surveyed by Morace C. Strisman, and was the last of a series of eight surveys numbered from 1 to 8 consecutively laid along the West bank of the Colorado river and which were generally identified as being all below the Atascita crossing. — Of these eight surveys Nos. 6 & 7 were also surveyed by Morace C. Strisman, but No. 5 was surveyed by Rawson Alley, No. 4 by J. M. Borden, No. 3 by Rawson Alley, No. 2 by Morace C. Strisman and No. 1 Surveyors name not given.

These surveys from the upper line of No. 1 to the lower line of No. 7 all call to run on Courses of 65° & 25° no other course being given.

They all call only for stakes at their various corners, without any bearing trees, natural objects or meander course on the river by which

8
0B
Wharton Co. 58. P. 14 #14

any later surveyor could identify any point
of beginning or ending on the river -
The back lines were nearly all in the prairie
so that no marked line could afterwards be
traced. N^o. 5 of the series was evidently
surveyed before N^o. 4 as is shown in the
original survey to be bounded on all sides
but the N. E. by vacant land - N^o. 6 calls
to join N^o. 5 but makes no call for the
survey below it - N^o. 7 calls for N^o. 6 but
makes no call for the survey below it -
N^o. 8 calls for N^o. 7 but makes no specific
call for any survey below it -

The surveyor of today therefore in attempting
to identify any of the surveys indicated
upon the ground is forced to rely nearly
altogether on his own judgment and
experience in determining where these lines
were originally actually placed upon the
ground, and seek for guidance from
sources outside the field notes of any
individual survey, such as what lines have
been held and recognized for a long period
of time - Now any of the surveys can be made
to fit the river at its called courses with
due respect to its location, & what the
original surveyors really did or thought
they did. -

As stated the "Low N^o Farland"
league is the eighth and last of a series
of surveys that came down the west bank
of the Colorado river on right angled
courses of $65^{\circ} - 25^{\circ}$ - There is a body
of five of these Colonial surveys that come
up the river from below in courses of 70° or

91

+ 20" of which the last surveyed is the uppermost
 for 1 1/2 leagues in the name of W^m Nicheloe -
 The "W^m Nicheloe" was evidently surveyed
 before the W^m McFarland as in its field
 notes it describes the land on that side
 as vacant, calls for no survey above it,
 and is fixed in its upper or N.W. corner
 by the lower or S.E. corner of the "John C.
 Clark" across the river - The "Nicheloe"
 west boundary calls to run S. 20° W. 3500 varas
 from the Colorado river to a stake in the
 prairie - The W^m McFarland
 league was evidently located after the
 W^m Nicheloe was an established survey
 upon the ground with all its courses as
 fixed by William Selkirk, the original
 surveyor, well known - That it was
 the design and supposition of Horace Bristow
 to fill the gap between the lower line of the
 W^m Robinson ~~and~~ in the upper series of
 surveys and the upper line of the W^m
 Nicheloe in the lower series of surveys by
 the W^m McFarland location is shown
 by the old Colonial Map in your office of
 the survey around San Felipe compiled
 by these early surveyors themselves where the
 McFarland and Nicheloe are made
 to connect, and this view is borne out by
 a consideration of the McFarland field
 notes - The surveyor of the McFarland
 began on the Robinson lower line and ran
 two courses conforming to the character of
 the survey above, of which this was to be
 the last of the series, to wit, S. 65° W, then
 S. 25° E. - From his 4000 vara point in his
 2nd course he then runs such a course as

10/03
Wharton Co. S. S. 174 #14

by calculation or otherwise he considered will take him to the S.W. Corner of the Wm Kincheloe as already established upon the ground - That course he calls N. 87° E. 5300 Varas - His reason for running at such an odd angle is wholly unexplainable to a surveyor under the condition the surrounding land was then in waters he had some fixed points ahead that required such a course to close on it - The explanation is given in the next course when he calls to run N. 20° E. 3500 Varas to the river, changing suddenly from the system of closing on the river used throughout in the upper series of surveys, and adopting the precise course and distance of the already surveyed upper line of the lower series - The last course to the river of the Wm McFarland is the exact ~~course~~ call of the Wm Kincheloe upper boundary - though there is no call for that survey -

A consideration of the plat shows that until the Kincheloe upper line is reached there is no point on the N. 87° E. course from which the river will be 3500 varas distant on a N. 20° E. course after passing the head of the bend. -

In the identification of the lower line of the Robinson which is the upper line of the McFarland for a beginning point, owing to the lack of any information to be derived from the field notes of these surveys (save course and distance) I was forced to identify that line by what had been held and recognized in former years.

An exploration of the abstracts of Wharton County shows me as follows, Bellville File R. pp. 27 - James

111
B. Miller, Curator to Wm. Robinson - deed to
Geo. Sutherland dated Oct. 23/34 conveying
the lower part of the Robinson league -
In a deed from Sheriff of Wharton County to
Geo. Sutherland of part of the Robinson Survey
it recites as being the same land ~~land~~ Geo.
Sutherland was then living on - Later there
is a conveyance of Frances Sutherland to
Mercer and Stephen Heard of the lower part
of the Robinson league in which the lower
line of the league is described and bearing
trees given on the river - Stephen Heard
lived on the property many years and
afterwards sold to his nephew Guy M. Jones
who also sold the property later having
now no interest in it whatever - I got
Mr. Jones address who is a small

storekeeper in Wharton County - He informed
me that he was fifty years old and had
known the Robinson league all his life -
That he was born and brought up in it and
finally had bought the lower part of it from
his uncle Stephen Heard - That Mr. Heard
showed him the lower line of the league and
that he knew where it was though he had
never seen a surveyor run it out in his life -
That it is the same line the present fence is
on, between the corner of the McFarland
and Robinson leagues, and further identified
as being about 50 yards below a certain house
the location of which is still plainly to be
seen - That is the identical line and
fence on which I based my survey -

The bottom at this point is narrow, the
prairie coming up to the high bank of the
river, but there is a narrow strip of timber-

14
30
suburban Co. SA. 1874

in the lower bottom in which I traced a marked line, some of the marks showing age. —

As a further identification of this point I have a certified copy before me of an ancient instrument of writing dated 24th April 1835 in which W^m. M^o Farland a resident in the Jurisdiction of Coahuila and Texas conveys to S. R. Lewis the upper half of the league known as N^o. 8 on the West Side of the Colorado river below the Atascosita road, and further describes this point as being the upper corner of N^o. 8 which is the lower corner of N^o. 7 on the West Side of the river, which "corner is in a prairie which approaches the said river bank" —

Having thus identified the division line of the Robinson and M^o Farland leagues by the testimony of an old citizen who was brought up on the Robinson league, who afterwards owned the lower half of it and was interested in knowing its boundary, also by its answering the description as to locality for the M^o Farland N. E. as given in said ancient instrument of writing, and furthermore by its being the line that is still held and fenced by the present owner, I had no hesitation in accepting it as the original South boundary line of the Robinson league, which is the M^o Farland North boundary kept in sight and never lost by a continued succession of resident owners upon the property.

In running up the Robinson league from its S. E. corner as thus identified I find some confusion in its N. W. corner as held on the ground — It would appear from an inspection

of the solid red line in the plat that Surveyor
 M. J. Shelby in fixing his Nasario Mancha
 Survey and also in identifying the Wm McFarland
 League had based his whole work on the S.E.
 corner of a 640-acre survey in the name of
 A. J. McDonald that was located on Mustang
 creek and not on any actual corner of either
 the Robinson or McFarland leagues - If the
 Robinson is to be identified by the point fixed on
 the river by the Surveyor of the A. J. McDonald
 640-acres in 1858, the lower line of the Robinson
 would come 1167 varas below where it has ever
 been shown or claimed, and would be 8600
 varas in length in its lower line to its S.E. corner
 and furthermore would leave the prairie and run
 for about 1200 varas through timber before it
 would reach the river bank at the head of
 a long bend as shown, which would not
 answer the description of the corner as given
 in the aforesaid ancient instrument of writing.

Also if such a location of the Robinson is
 correct, the N.W. corner of the Wm McFarland
 league would not be identified by N. 65° E.
 1000 varas from the Robinson S.W. corner
 which appears to be Surveyor Shelby's view
 but would be fixed by S. 65° W. 5000 varas from
 the corner on the river. - Hence S. 25° E.
 4000 varas - Hence N. 87° E. 5300 varas
 which would place it upwards of a 1000 varas
 in conflict with the Wm Kincheloe - Hence
 N. 20° E. a much greater distance than
 3500 varas to the river - Such an
 adjustment is shown by the dotted red
 line on the McFarland in the plat -

The plat shows a wide excess in the lower
 boundary the cause of which I had no

14/08
Wharton Co. St. 1874

opportunity of determining, but the explanation
as a matter of opinion I think would be
found farther up the river - There is
a Surveyor's statement on file in your office
in which the length of the back line of the
Preston Gilbert league is given as 7690 varas
upon the ground from its N.W. to its S.W.
corners, and excess over the call of 1690 v.
It would appear as if the Preston Gilbert
survey as now held had been pushed down
upon the "Gaus", the Gaus upon the Robinson
for distance, but the Robinson has been held
back in its lower boundary by the recognized
and identified actual line of original survey
between it and the Com. M^o Farland. The
consequence is that the Gaus survey does not
fit the river in its called distances and
has a wide excess in its lower line as
figured from above. —

Respectfully
W^m M. Lockie
State Surveyor, Wharton Co. Tex.

Plat File 14.

Report of Survey

Made on the
Trm. McFarland
Tract & adjoining
Surveys in

Wharton County

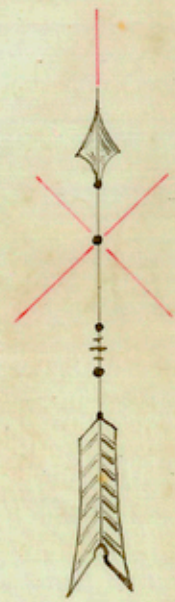
by
Wm. H. Leckie
State Surveyor

Jan 4 1895

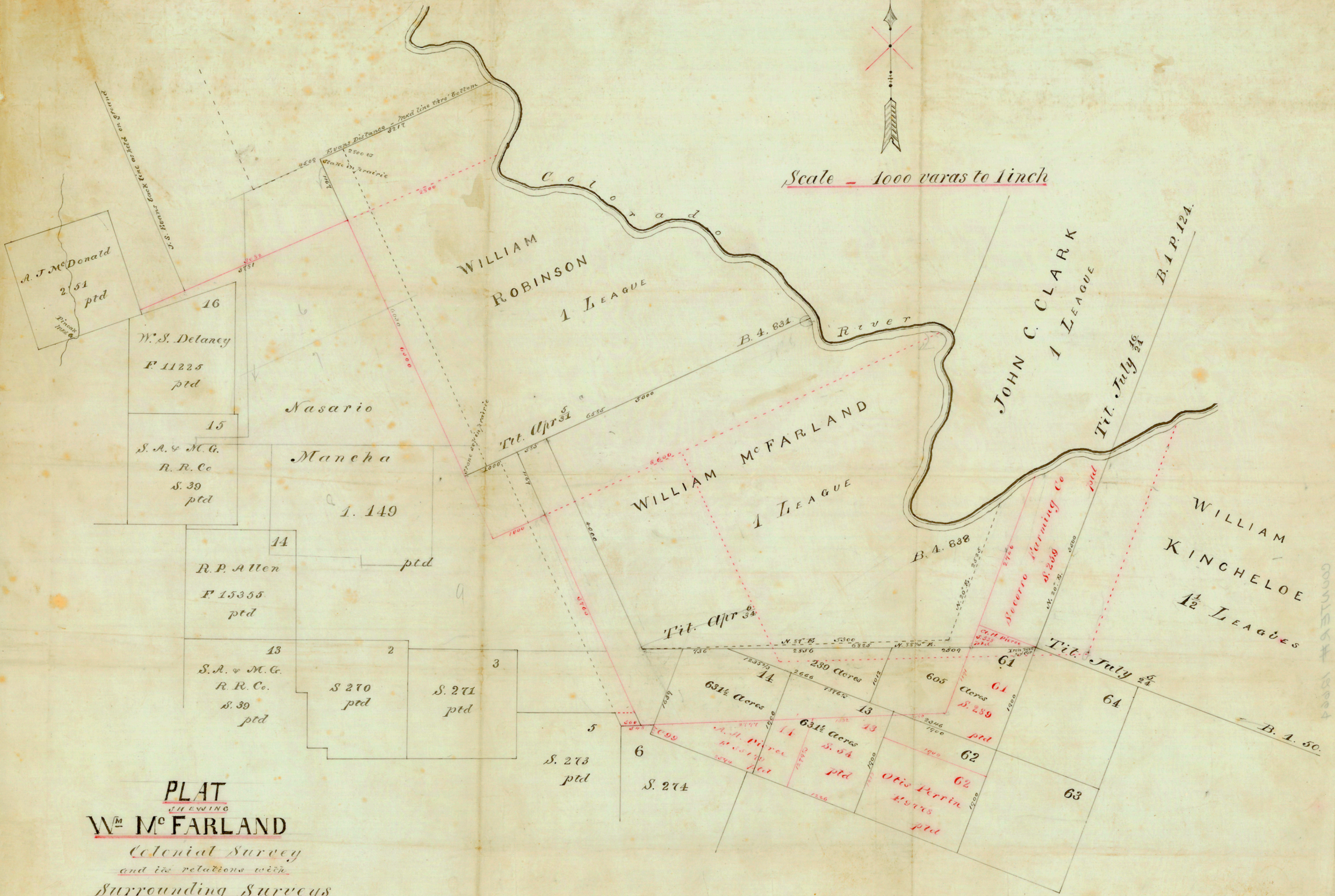
Filed in General Land
Office Jan 11th 1895

H. Campbell
Chief Clerk

counter 139962



Scale - 1000 varas to 1 inch



PLAT
J. H. EWING
W^m M^c FARLAND
Colonial Survey
and its relations with
Surrounding Surveys

Made from actual measurements by
W^m H. Leckie
State Surveyor
January 1895

COMPLET 1894