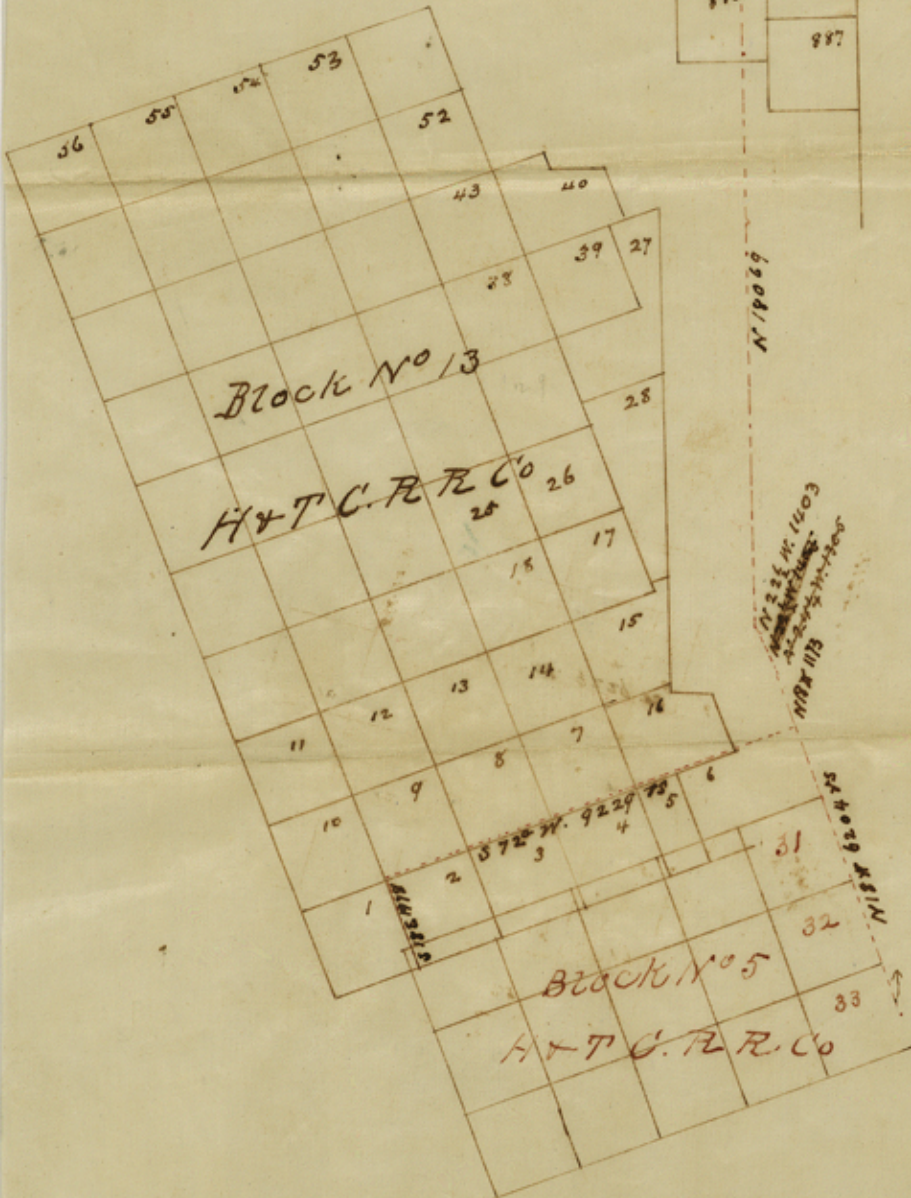


Scale: 4000 ft. = 1 in



Michigan Co

1800 ft. counter 70084

State of Texas } Plat and field notes of a  
Clay Land District } Connecting line in Wichita  
County,

Beginning at a pile of stone on the E. B. line of N<sup>o</sup> 32  
in Block N<sup>o</sup> 5 for the H. & T. C. R. R. Co. 440 vs N 18° W  
from its S.E. corner. Thence N 18° W. 6204 vs. 1.  
a high post in prairie. Thence S 72° W. 9229  
vs. Thence S 18° E. 1978 vs. to S.E. cor of N<sup>o</sup> 1 Block 13  
for H. & T. C. R. R. Co. an earthen mound covered with  
flat sand stone from creek. from which a  
steep point of hill bears S 29° E about 1400 vs.  
a cluster of Elms in head of ravine br. N 57° W  
about 400 vs. 2 cottonwoods mk<sup>a</sup> M. br. N 86 vs.  
2 do. (both dead and down but marks plainly  
visible) br S 33½° W. 39¾ vs. Returning to  
high post in prairie before mentioned  
Thence N 18° W. 1173 vs. Thence N 22½° W. 1403 vs.  
Thence North. 18069 vs. to a stake mk<sup>a</sup> 35 in  
Valley of Red River, Thence N 83½° E. 1480 vs.  
to N.W. corner of N<sup>o</sup> 875 for M. E. P. & O. R. R. Co  
Surveyed December 15<sup>th</sup> 1881

George Raines }  
David Campbell }  
J. C. B. Patterson

Surveyor of Clay Land  
District do hereby certify that the fol-  
-going Survey was made according to  
law and the same recorded in my  
office in Book A Wichita Co.  
counter 40085

File 13.<sup>a</sup>

Wichita County

Filed January 20<sup>th</sup> 1882.

Rhoads & Miller  
C. J. C. B.

Returning by request  
in letter Jan 17/82

W. Neil  
CB Pattersons F.N. of Con. line  
from E.B. line of #33 BIK 5,  
Dated Dec. 15, 1881,  
Filed Jan. 20, 1882,

o counter 40084

Records on page 146  
C. J. Patterson  
Volney & Co. Dist